

Process ID # 33573  
 R.P.O Vol. 76 Fol. 193  
 C.T. Vol. 603 Fol. 537

**Coordinates**

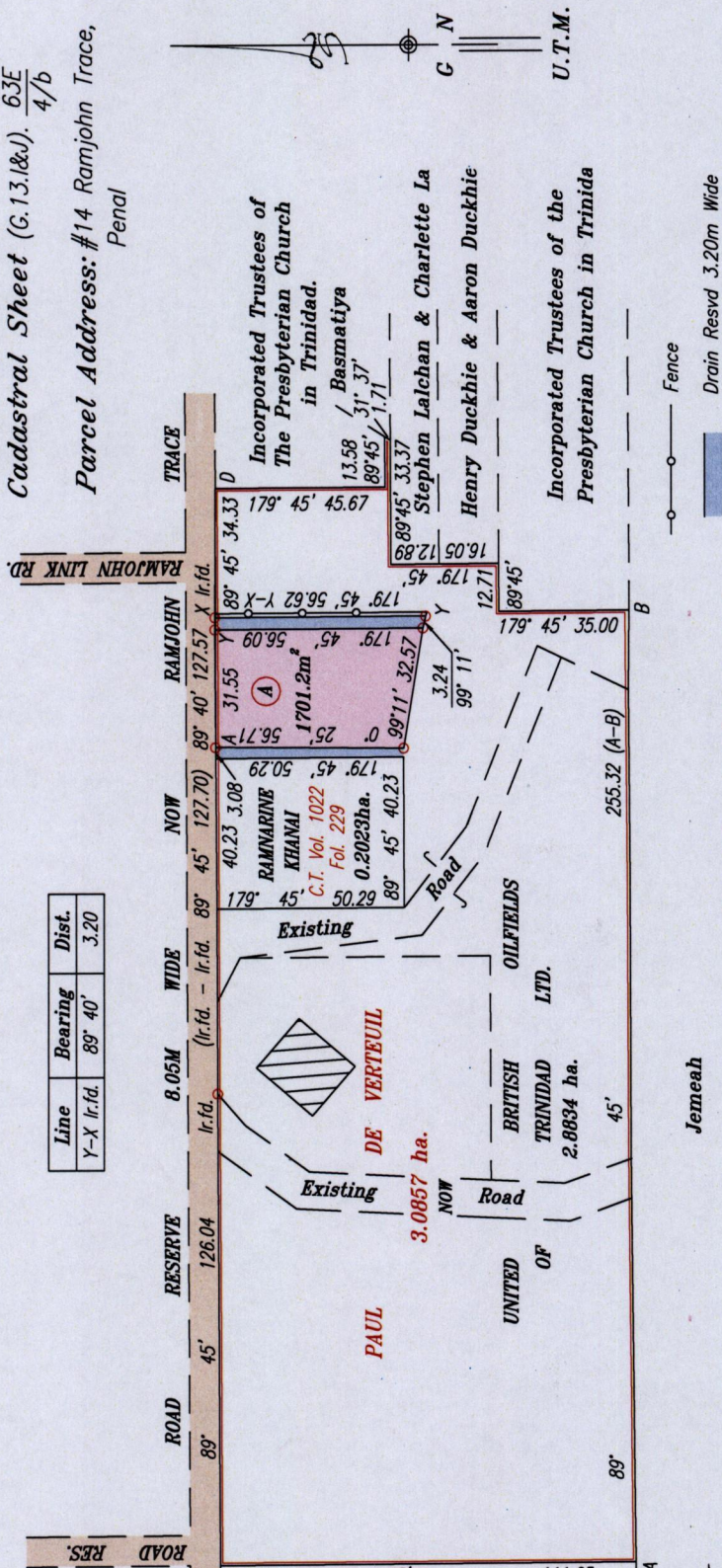
Ir.pt. A : N 1124460  
 E 668686

Error Statement : ±4m

Datum Definition : U.T.M. Zone 20 Naparima

Source : Magellan Hand Held GPS

Ward of Siparia  
 County of St. Patrick  
 Cadastral Sheet (G.13.&J). 63E  
 4/b  
 Parcel Address: #14 Ramjohn Trace,  
 Penal



Line	Bearing	Dist.
Y-X	89° 40'	3.20

Approved: *[Signature]*  
 Director of Surveys 2011-6-2

○ Denotes Iron put except otherwise stated.

Note: Bearings are U.T.M. grid based on solar observations.

Plan of a Parcel of land coloured pink in the Ward of Siparia.

Containing one thousand seven hundred and one point two square metres. Surveyed by me with due authority, in November 2002.

In accordance with Regulation 25(1) of the Land Surveyors' Regulations 1998,

I certify that this plan is correct.

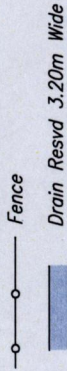
Checked by: *[Signature]* 26/5/2011

Entered: *[Signature]*

See Bk. 1145 Fol. 210

SCALE 1:2000

Distances are in metres.



1376

125



*[Signature]*  
 Trinidad & Tobago Land Surveyor 187051