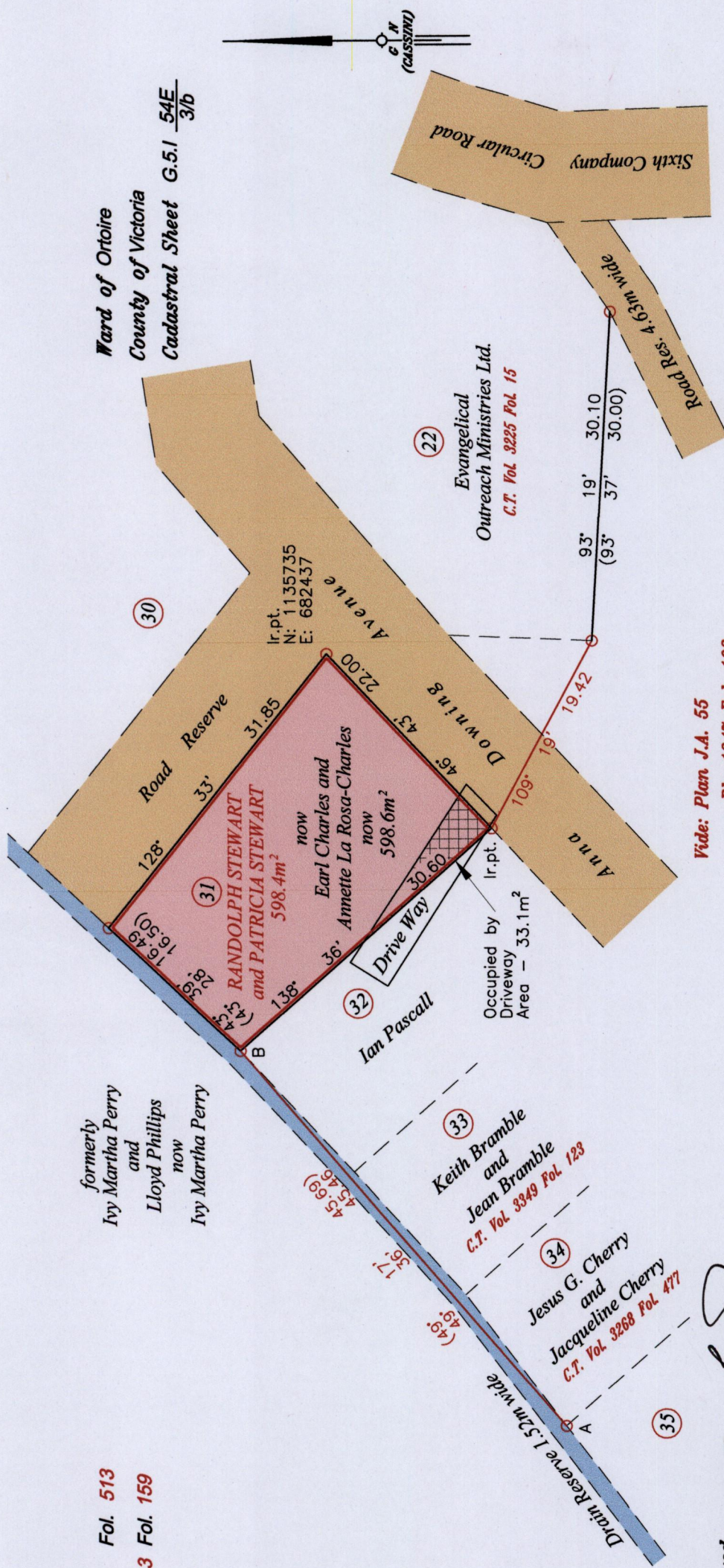


R.P.O. Vol. 20 Fol. 513
 C.T. Vol. 5013 Fol. 159

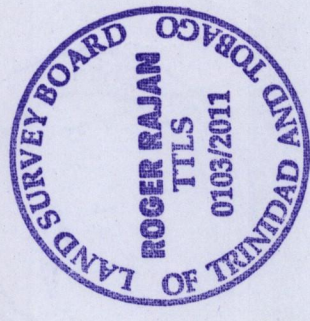
Ward of Ortoire
 County of Victoria
 Cadastral Sheet G.5.1 54E 3/b



Approved
 Director of Surveys 2011.5.27

○ Denotes Iron found except stated otherwise.
 Bearings are Cassini Grid based on Solar Observations
 Plan of a Parcel of land coloured pink in the Ward of Ortoire.
 Containing five hundred and ninety eight point six square metres.
 Surveyed by me, with due authority, in February 2011 for Earl Charles.
 In accordance with Regulation 25 (1) of the Land Surveyors' Regulations 1998,
 I certify that this plan is correct.

Vide: Plan J.A. 55
 Bk. 1247 Fol. 103
 Bk. 322 Fol. 116
 Bk. 1227 Fol. 129
 SCALE 1:500
 Distances are in metres



Coordinate was obtained from Hand Held GPS.
 Naparima Datum (+/-5m)
 UTM Zone 20

Checked by: MML 24/5/2011
 Entered on Trinidad & Tobago Land Surveyor..... 2011

1376

120