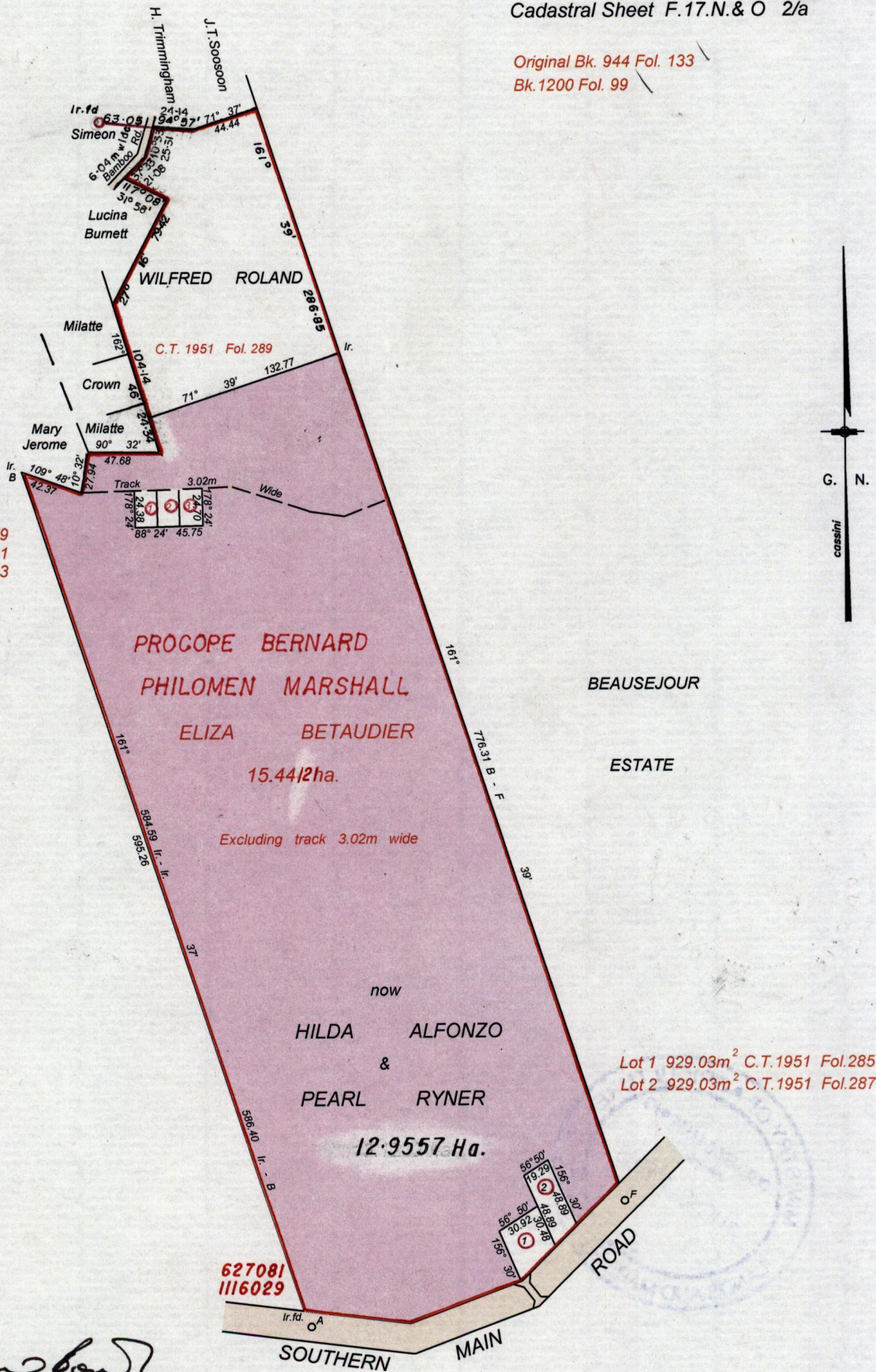


R.P.O. Vol. Fol.
C. T. Vol. 1540 Fol. 397

Ward of Siparia
County of St. Patrick **71D**
Cadastral Sheet F.17.N.&O 2/a

Original Bk. 944 Fol. 133
Bk. 1200 Fol. 99



Lot 1- 0.0919 ha. C.T.1951 Fol.279
Lot 2- 0.0919 ha. C.T.1951 Fol.281
Lot 3- 0.0925 ha. C.T.1951 Fol.283

Lot 1 929.03m² C.T.1951 Fol.285
Lot 2 929.03m² C.T.1951 Fol.287

Approved *[Signature]*
9 Director of Surveys 2010.12.20

SCALE: 1 / 4000
Distances are in metres

Note: To obtain compass bearing subtract 22 minutes
UTM (WGS 84) Coordinate zone 20 (Accuracy ± 3.0m)

This is a true copy of a diagram of fifteen point four four one two hectares originally granted to P. BERNARD, E. BETAUDIER & P. MARSHALL Shewing a portion coloured pink and containing twelve point nine five five seven hectares being the remainder after six transfers of another portions of the land. In accordance with Rule 25(1) of the Land Surveyors Regulations 1998 I certify that this plan is correct

Checked by *M.10.12.14*
Entered on

Michael Jones
Trinidad & Tobago Land Surveyor
23 - 7 - 2010

