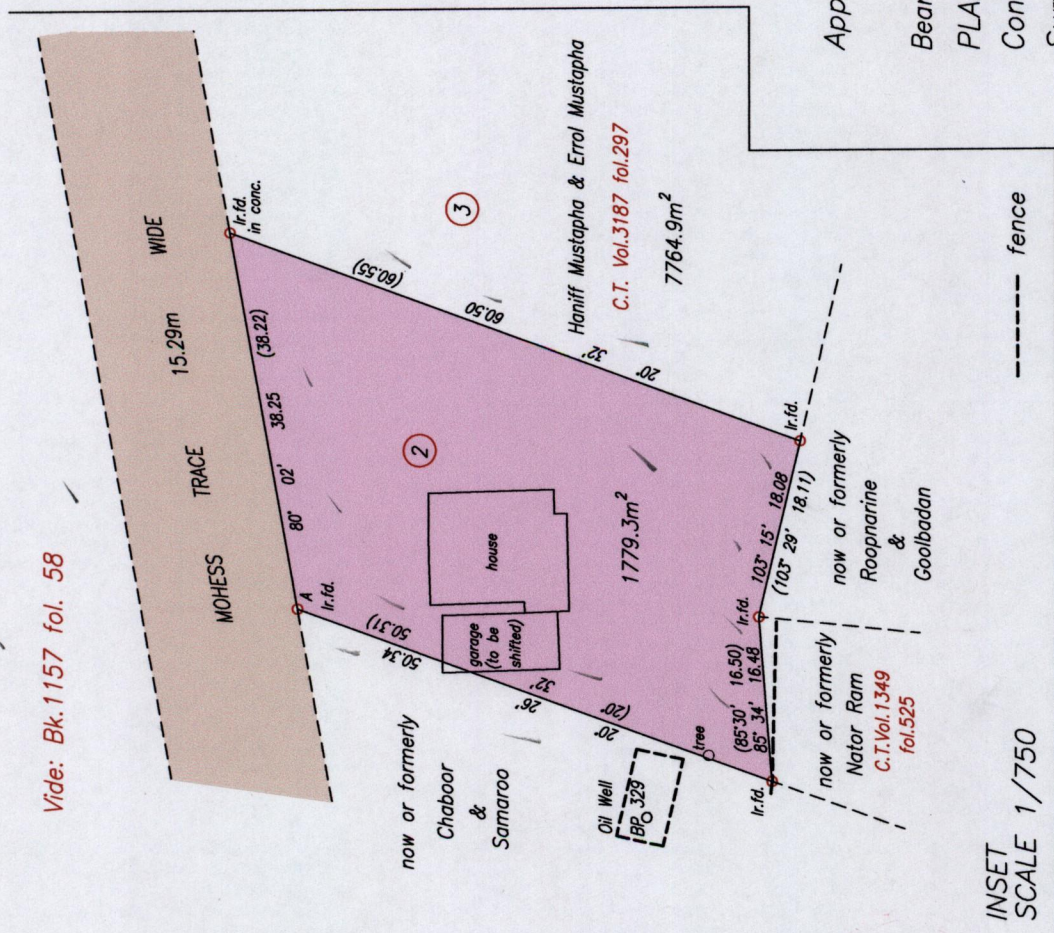
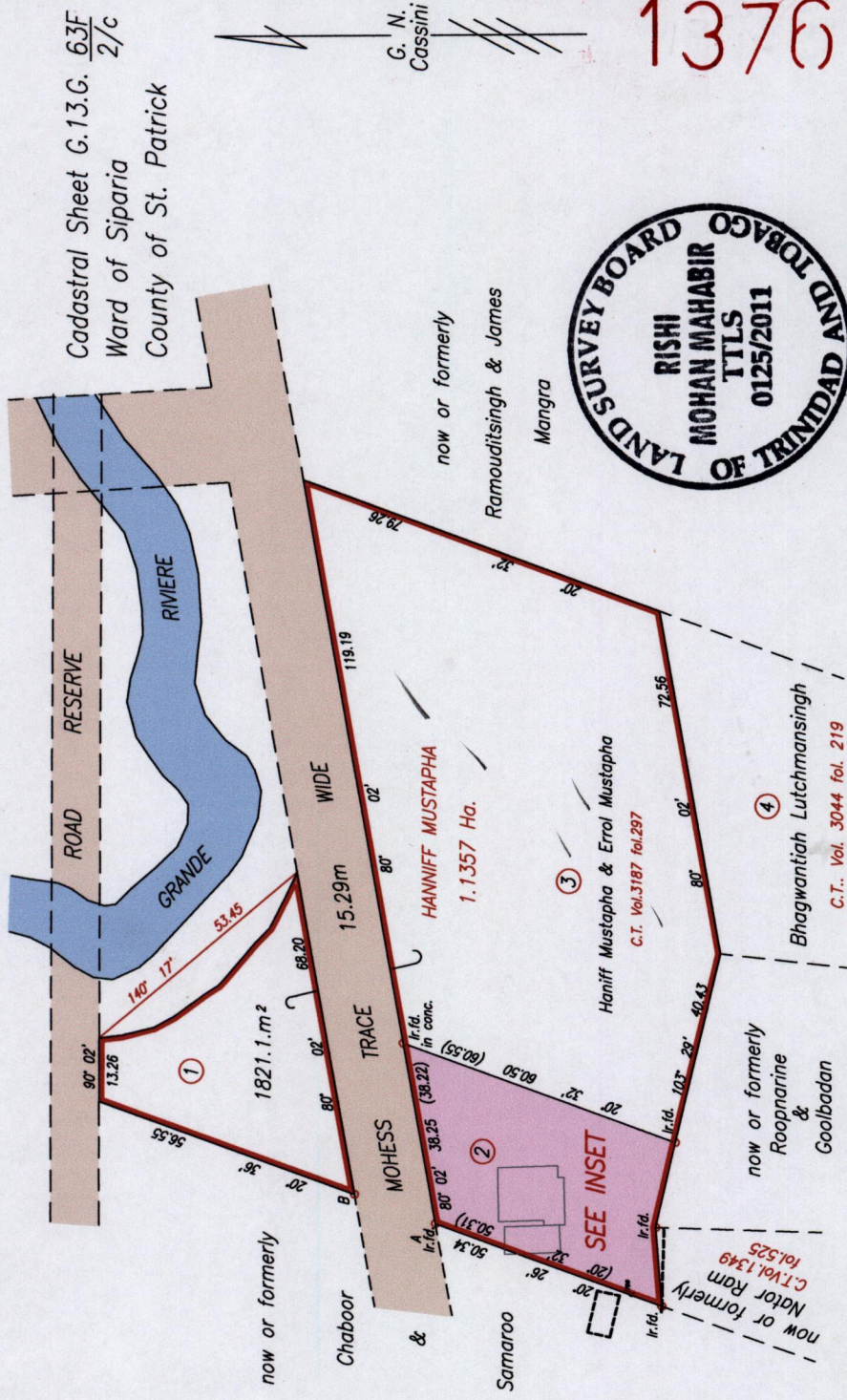


R.P.O. Vol. 193 fol. 521  
C.T. Vol. 3044 fol. 217

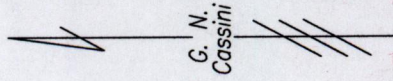
Vide: Bk. 1157 fol. 58



INSET  
SCALE 1/750



Cadastral Sheet G.13.C. 63F  
Ward of Siparia  
County of St. Patrick



1376

118



Distances are in metres  
A Ir.fid. N 1125455 Hand Held GPS +/- 5m  
E 672000 UTM proj. nsp. 1955 datum

SCALE 1/1500  
Distances are in metres

Approved *[Signature]*  
Director of Surveys 2011.5.24

Bearings are Cassini based on Solar Observations

PLAN of a parcel of land coloured pink in the Ward of Siparia  
Containing one thousand seven hundred and seventy nine point three square metres  
Surveyed by me, with due authority, in January, 2011

In accordance with Regulation 25 (1) of the Land Surveyors' Regulations 1998,  
I certify that this plan is correct.

Checked by *[Signature]*  
Entered on .....  
Trinidad & Tobago Land Surveyor. *[Signature]* .....2011