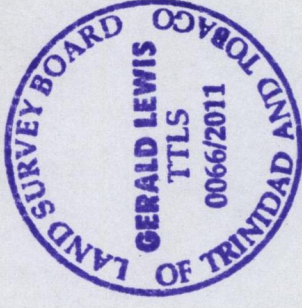
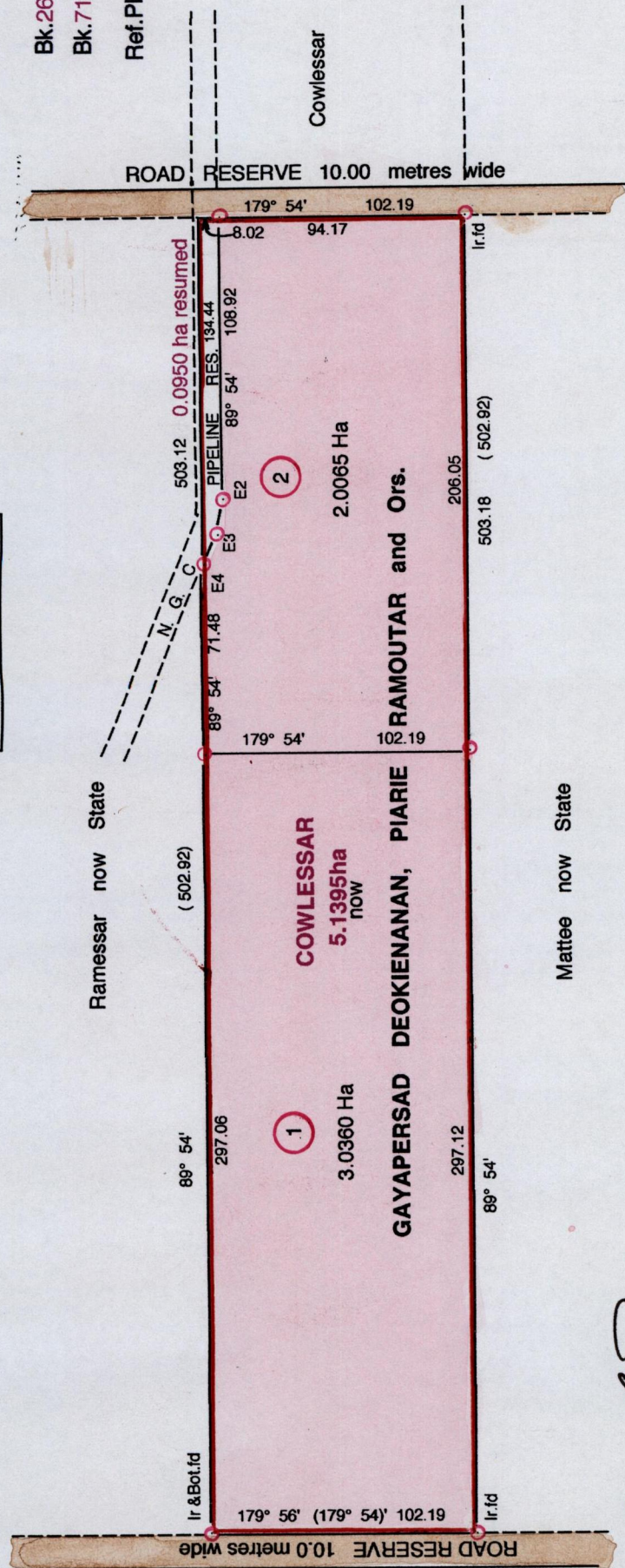


Cadastral Sheet **54E, D.25.1**
 2/a,2/c
 Ward of Charuma
 County of Nariva

Bk.264 Fol. 93
Bk.718 Fol.125
 Ref.Plan: **AN 79J**



Line	Brg.	Dist.
E4 - E3	111° 50'	13.97
E3 - E2	102° 20'	13.00
E - E1	179° 54'	8.02



Distances are in Metres
SCALE 1 :2500

UPRN No.

R.P.O Vol 114 Fol 335
C.T. Vol 483 Fol 83

Approved: *[Signature]*
 Director of Surveys **2011.5.20**

- Denotes Iron Put unless otherwise stated
- Bearings are Cassini Grid based on Solar Obs.

PLAN of 2 parcels of land coloured pink in the Ward of Charuma
Containing together five point zero four two five hectares

Surveyed by me, with due authority, in September 2007

In accordance with Regulation 25(1) of the Land Surveyors' Regulations 1998, I certify that this plan is correct.

Checked by *M.A.M.* **16/5/2011**
 Entered by

[Signature]

Trinidad & Tobago Land Surveyor **09 / 05 / 2011**