

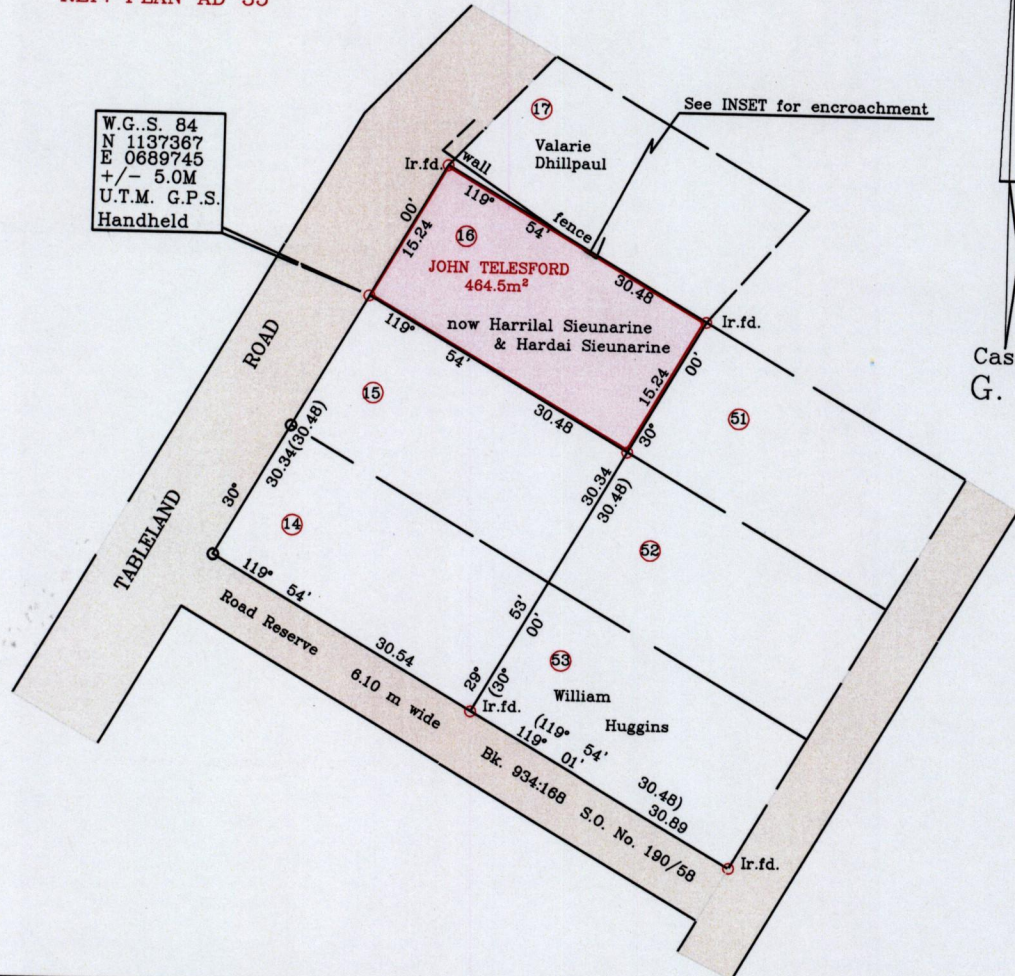
REDEFINITION PLAN

R.P.O. 397 Fol. 171  
C.T. 1601 Fol. 403

Cadastral Sheet H.I.E. 54F  
Ward of Ortoire 2/c  
County of Victoria

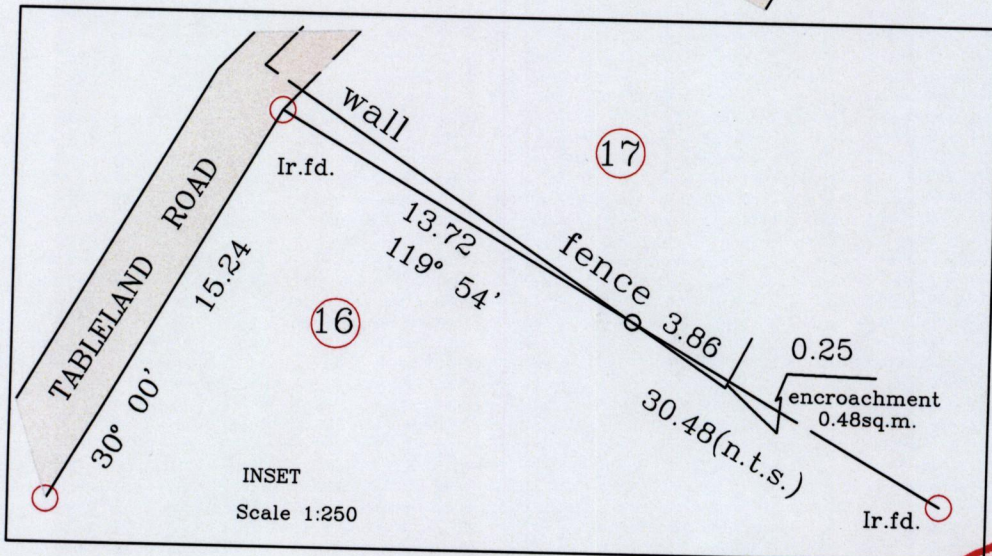
Lot #16 RAMDHANIE VILLAGE

REF. PLAN AD 35

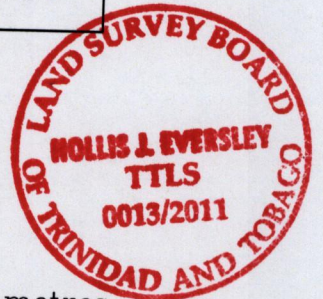


W.G..S. 84  
N 1137367  
E 0689745  
+/- 5.0M  
U.T.M. G.P.S.  
Handheld

Cassini  
G. N.



Approved *[Signature]*  
Director of Surveys 2011.5.19



Scale 1: 750  
Distances are in metres

○ Denotes Iron put except stated otherwise  
 Note : Bearings are Cassini Grid based on Solar Observations  
 Plan of a parcel of land coloured pink in the Ward of Ortoire  
 Containing four hundred and sixty-four point five square metres  
 Redefined by me, with due authority, in January 2011  
 In accordance with Reg. 25(1) of the Land Surveyors' Regulations 1998,  
 I hereby certify that this plan is correct  
 Trinidad and Tobago Land Surveyor.....  
 Checked by *[Signature]* 13/5/2011  
 Entered..... date 19<sup>th</sup> Feb 2011