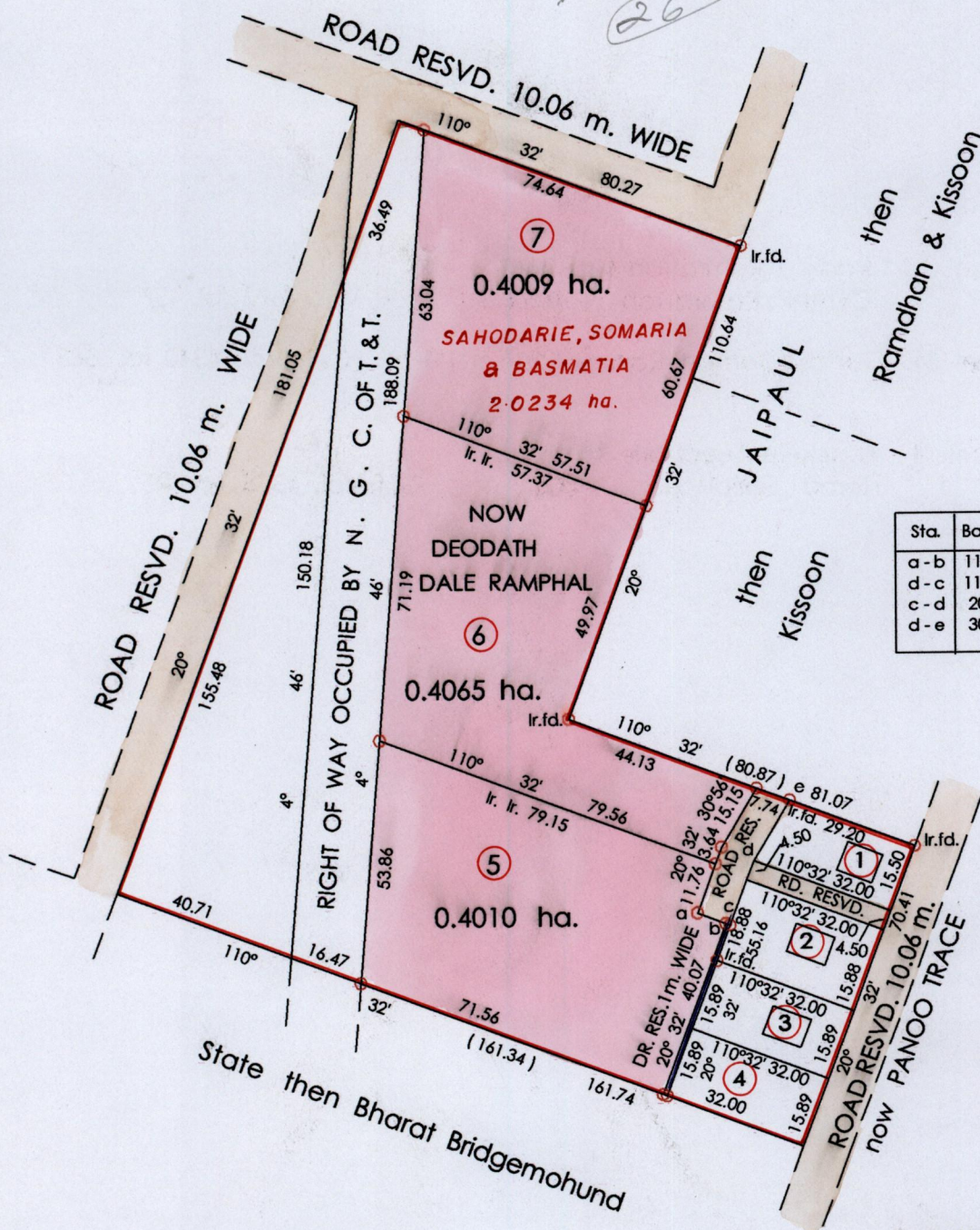


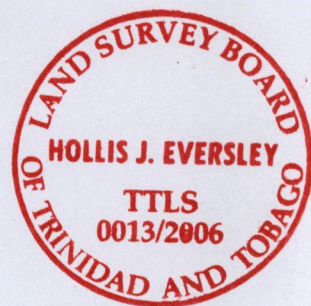
R.P.O. Vol. 106 fol. 287  
C.T. Vol. 2027 fol. 207  
Bk. 1247 fol. 149

Ward of Naparima  
County of Victoria  
Cadastral Sheet ( G. 13 C. )  $\frac{63 F}{2 / c}$

*located  
(26)*



Sta.	Bearings	Dist.
a-b	110° 32'	6.62
d-c	110° 32'	1.00
c-d	20° 32'	15.09
d-e	30° 56'	15.15



See Back of Plan for Schedule

Approved *[Signature]*  
Director of Surveys  
2006.10.11

○ Denotes Iron Put Except Otherwise Stated

SCALE : 1 : 1250

Note: Bearings are cassini grid based on solar observations Distances are in metres

PLAN of 3 Parcels of land coloured pink in the Ward of Naparima  
Containing together one point two zero eight four hectares  
Surveyed by me, with due authority, in June 2006

In accordance with Regulation 25 (1) of the Land Surveyors' Regulations 1998,  
I certify that this plan is correct.

Checked by *[Signature]* 9/10/06

Entered on ..... Trinidad & Tobago Land Surveyor ... *[Signature]* ... 2006

Parcel ① Radica Ramrattan &  
Cynthia Ramrattan 466.6 m<sup>2</sup> C.T. Vol. 3675 fol. 457

Parcel ③ Gangia Semon Rampersad 508.5 m<sup>2</sup> C.T. Vol. 4340 fol. 365

Parcel ④ Rupdaye Seecharie &  
Hema Seecharie 508.5 m<sup>2</sup> C.T. Vol. 4335 fol. 95



1315/96