

R.P.O. Vol. 16 Fol. 431

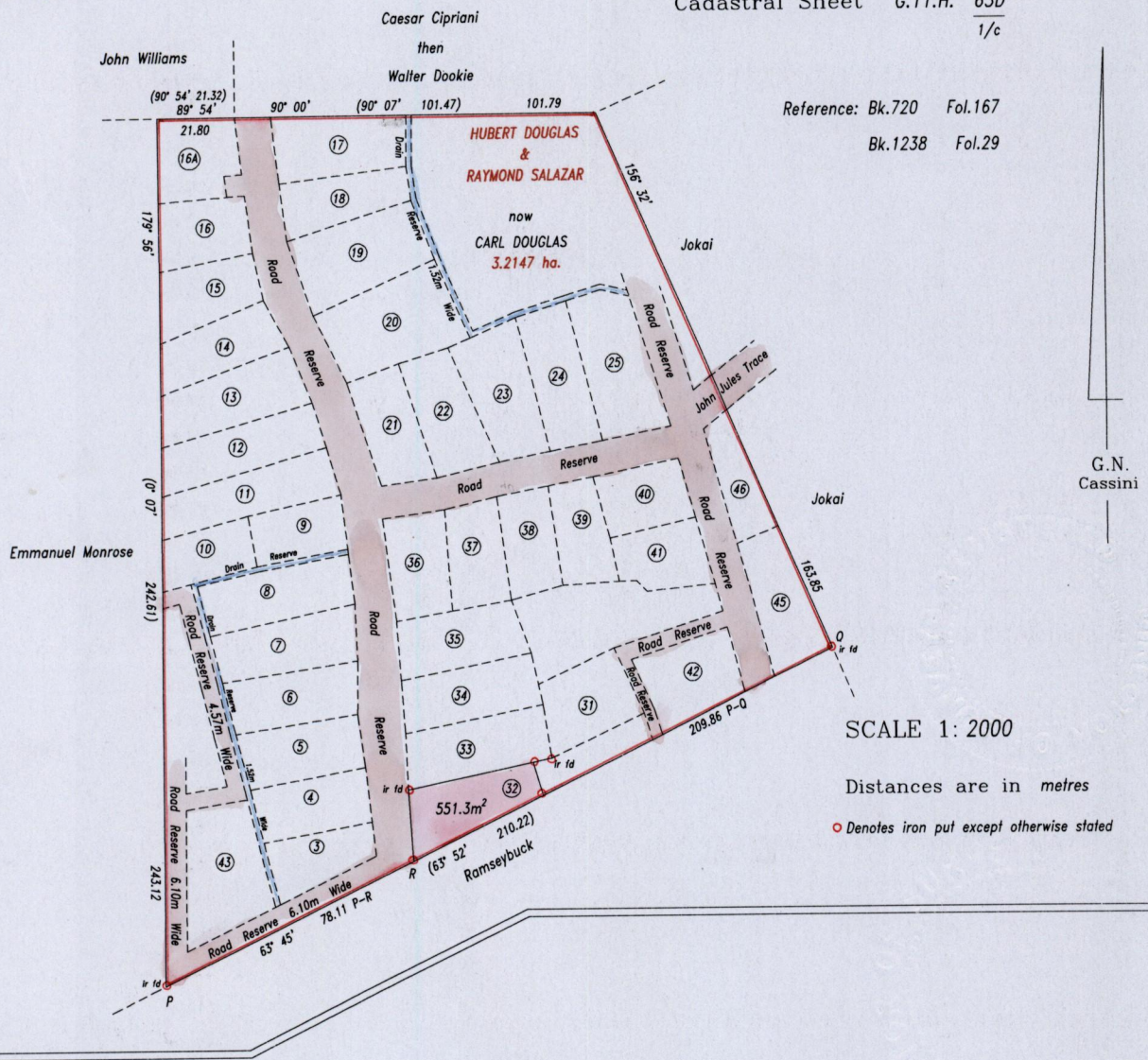
C.T. Vol. 1548 Fol. 67

U.P.R.N. No.:

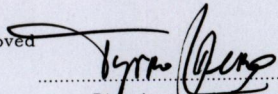
Ward of Siparia

County of St. Patrick

Cadastral Sheet G.11.H. 63D  
1/c



Located (32)

Approved   
Director of Surveys  
2006.10.11

See Back of Plan for Transfers

SCALE 1: 1000

Distances are in metres

○ Denotes iron put except otherwise stated

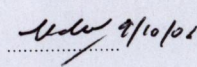
Bearings are Cassini Grid based on Solar Observations

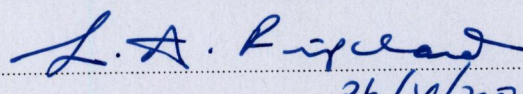
PLAN of a parcel of land coloured pink in the Ward of Siparia

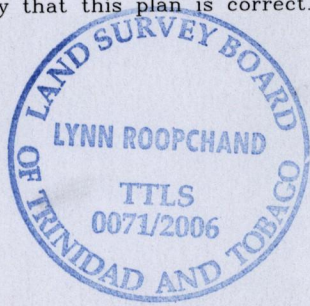
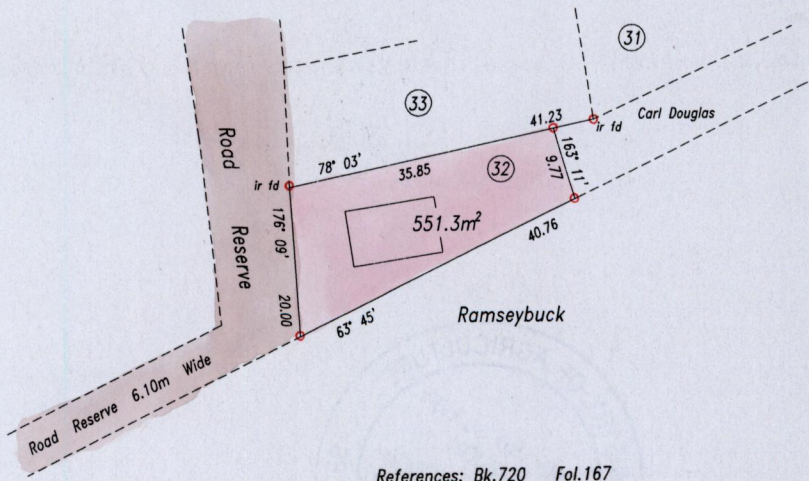
Containing five hundred and fifty one point three square metres

Surveyed by me, with due authority, in March 1998

In accordance with Regulation 25(1) of the Land Surveyors' Regulations 1998, I certify that this plan is correct.

Checked by   
Entered .....

  
Trinidad & Tobago Land Surveyor 26/10/2006



Parcel No.	Transferee	Area	R.P.O. Vol.	Fol.
3		421.4m <sup>2</sup>		
4		490.2m <sup>2</sup>		
5		525.1m <sup>2</sup>		
6		534.6m <sup>2</sup>		
7		588.7m <sup>2</sup>		
8		623.4m <sup>2</sup>		
9		394.3m <sup>2</sup>		
10		373.6m <sup>2</sup>		
11		623.5m <sup>2</sup>		
12		603.2m <sup>2</sup>		
13		628.0m <sup>2</sup>		
14	Lystra Pennie & Chris Jr. Pennie	497.4m <sup>2</sup>	4618	95
15	Elechia Thomas	479.9m <sup>2</sup>	4060	147
16	Thomas Joseph & Lenore Joseph	457.0m <sup>2</sup>	3960	103
16A	Bryan John	494.5m <sup>2</sup>	4429	533
17		607.3m <sup>2</sup>		
18		472.1m <sup>2</sup>		
19		748.6m <sup>2</sup>		
20		847.5m <sup>2</sup>		
21		489.4m <sup>2</sup>		
22		546.4m <sup>2</sup>		
23		637.1m <sup>2</sup>		
24		584.1m <sup>2</sup>		
25	David Wilson	745.1m <sup>2</sup>	3896	111
31		519.4m <sup>2</sup>		
33		614.6m <sup>2</sup>		
34		558.1m <sup>2</sup>		
35		561.3m <sup>2</sup>		
36		484.6m <sup>2</sup>		
37		461.9m <sup>2</sup>		
38		428.0m <sup>2</sup>		
39		424.9m <sup>2</sup>		
40		434.9m <sup>2</sup>		
41		435.8m <sup>2</sup>		
42		528.0m <sup>2</sup>		
43	Winston Alexis & Ingrid Alexis	764.8m <sup>2</sup>	4398	139
45	Joy Glasgow Primus	587.1m <sup>2</sup>	4349	319
46		360.7m <sup>2</sup>		



1375/95