

Not located

1375

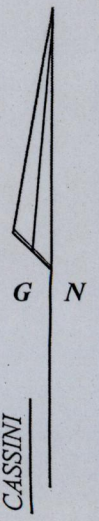
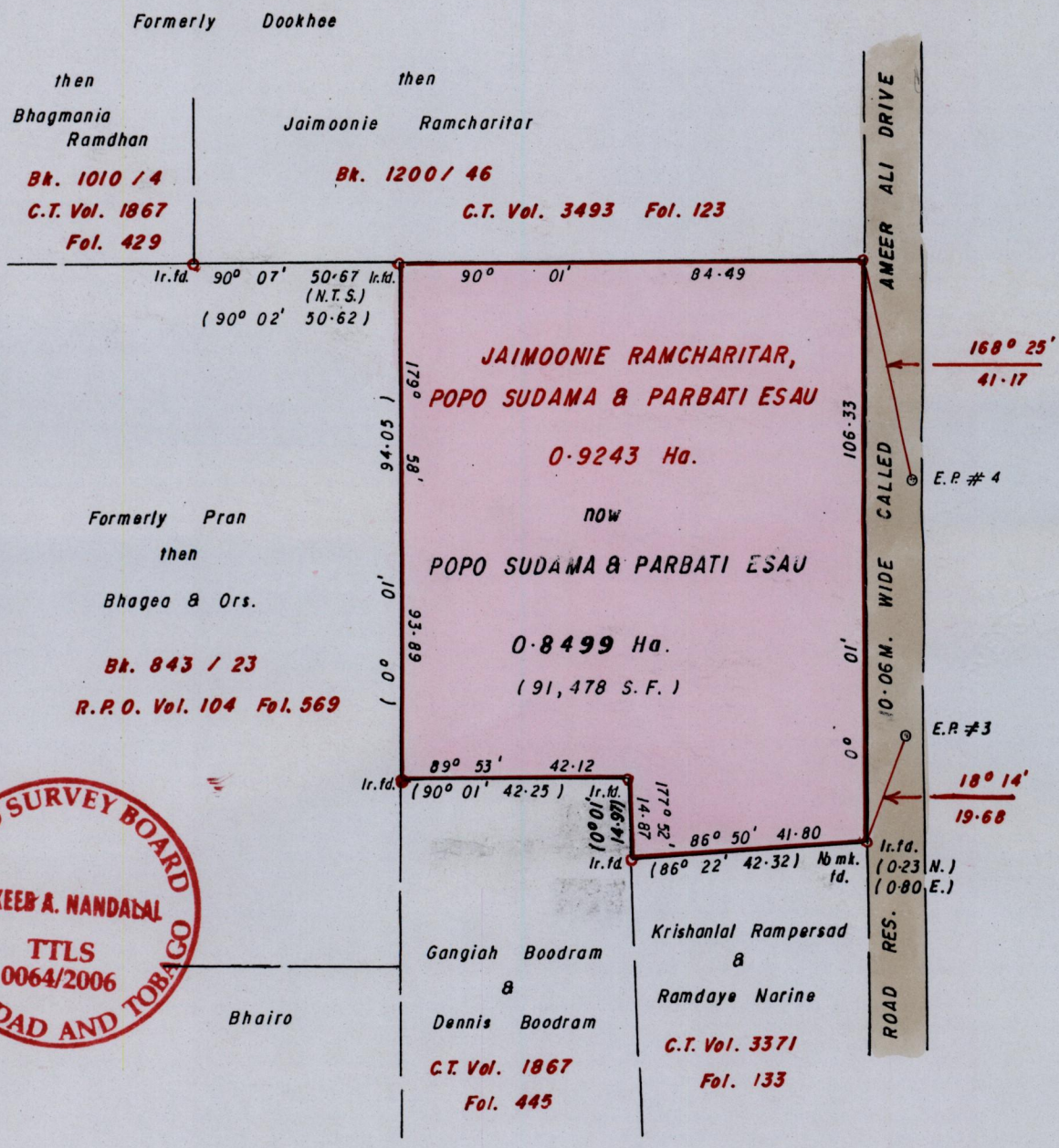
788

R.P.O. Vol. 104
C.T. Vol. 4038

Fol. 553
Fol. 429

Ward of Siparia
County of St. Patrick
Cadastral Sheet 63F, G.13.K.

Ref. Bk. 1197 / III
PLAN G. A. 32
Bk. 1110 / 5
Bk. 393 / 284



Approved
Director of Surveys
2006-09-04

○ Denotes Iron put unless otherwise stated
Bearings are Cassini Grid based on Solar Obs.
SCALE 1/1250
Distances are in METRES

Note: To Obtain compass bearings add/subtract minutes

PLAN of a Parcel of land coloured PINK in the Ward of Siparia
Containing zero point eight four nine nine hectare
Surveyed by me, with due authority, in June 2006 for Parbati Esau
In accordance with Regulation 25 (1) of the Land Surveyors' Regulations 1998,
I certify that this plan is correct.

Checked by
Entered
Trinidad and Tobago Land Surveyor 16/08 2006