

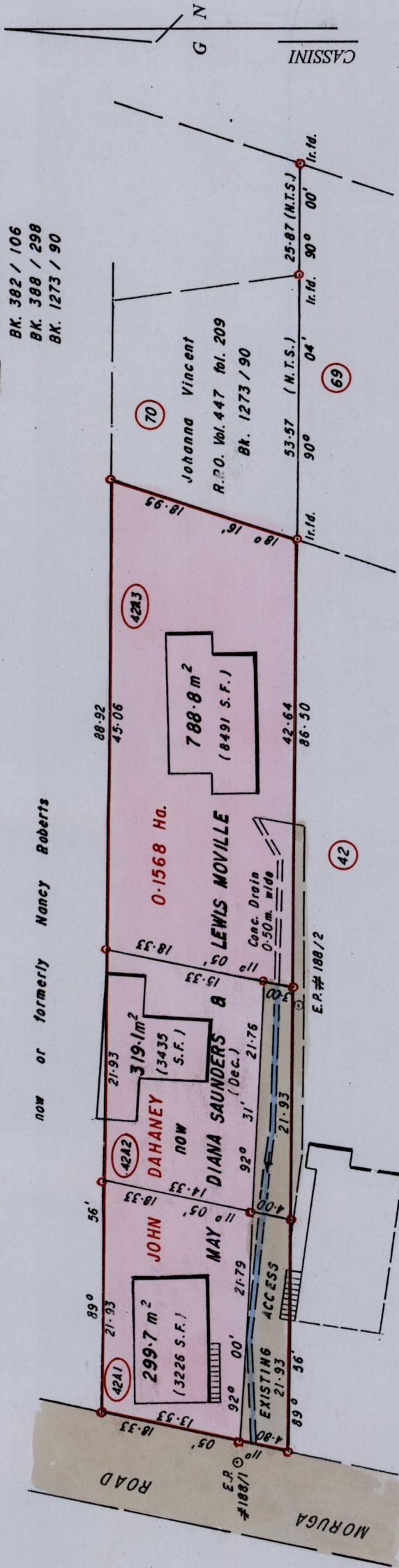
R.P.O. Vol. 410
C.T. Vol.

Fol. 339
Fol.

Ward of Ortoire
County of Victoria
Cadastral Sheet G. 10. N., 64 B
4/d

Lot 42A - PREAU VILLAGE
Ref. PLAN B.C. 77
BK. 382 / 106
BK. 388 / 298
BK. 1273 / 90

located ④



Approved *[Signature]*
Director of Surveys
2006.09.13

Bearings are Cassini Grid based on Solar Obs

PLAN of 3 Parcels of land coloured PINK in the Ward of Ortoire
Containing together one thousand four hundred and seven point six square metres
Surveyed by me, with due authority, in June 2005 for Winston Saunders & Lewis Moville
In accordance with Regulation 25 (1) of the Land Surveyors' Regulations 1998, I certify that this plan is correct.

Checked by *M.M. 6/9/06*
Entered
Trinidad and Tobago Land Surveyor 20/05 2006.

SCALE 1 / 500

Distances are in METRES
o Denotes Iron put unless otherwise stated

1375

73