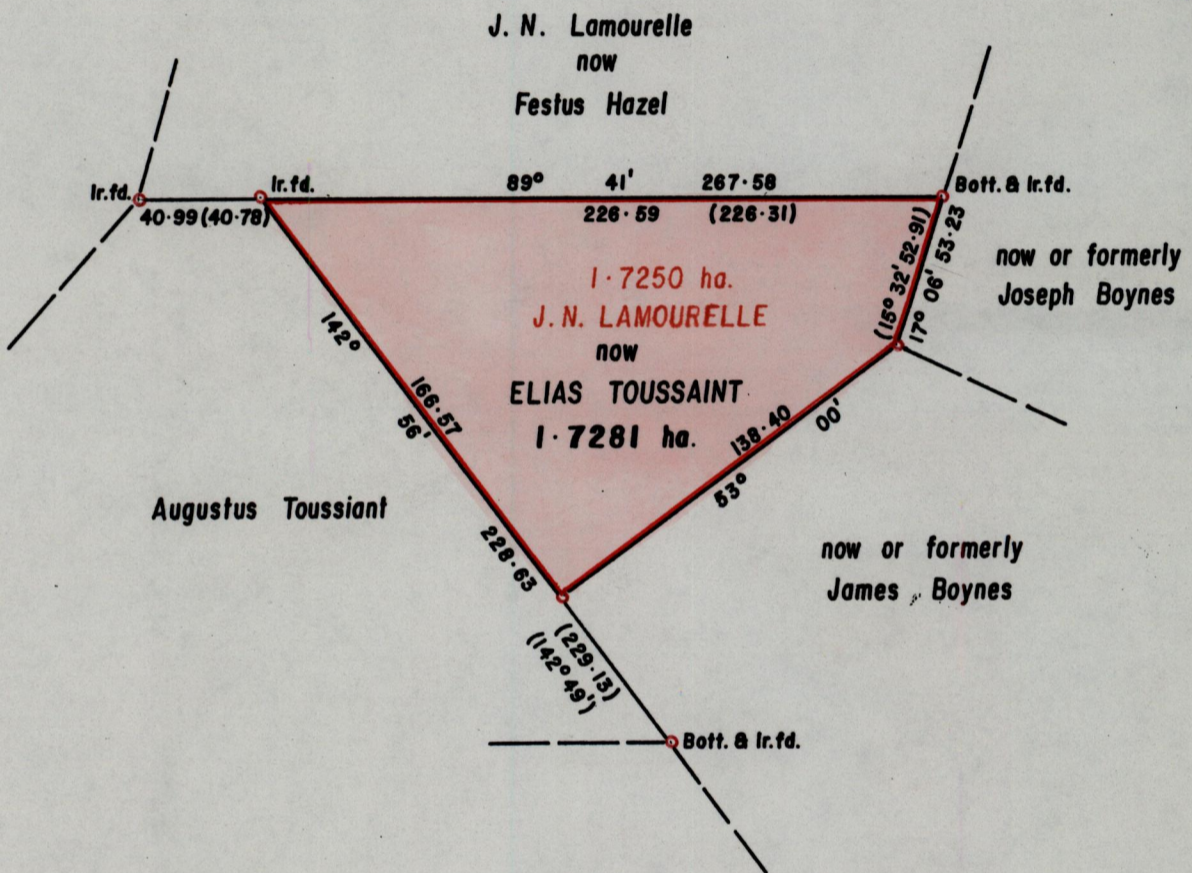


U.P.I.N. No.
 R.P.O. Vol. 29. Fol. 551.
 C.T. Vol. 1451. Fol. 413.

1375

Cadastral Sheet E.8. A. & B. 36A
 Ward of Turre. 4/a.
 County of St. Andrew.
Vide Plan X. A. 58.

located
 (9)



Approved *[Signature]*
 Director of Surveys.
 2006.8.8

SCALE 1:2500.
 Distances are in Metres.

• Denotes Iron put except otherwise stated.
 Bearings are Cassini Grid based on Solar Observations.
PLAN of a Parcel of land coloured pink in the Ward of Turre.
 Containing one point seven two eight one hectares.
 Surveyed by me with due authority in September 2004.
 In accordance with Regulation 25 (1) of the Land Surveyors' Regulations 1998,
 I certify that this plan is correct.

Entered on *[Signature]*
 Checked by *[Signature]* Trinidad & Tobago Land Surveyor. 17 July 2006.

