

1375

56

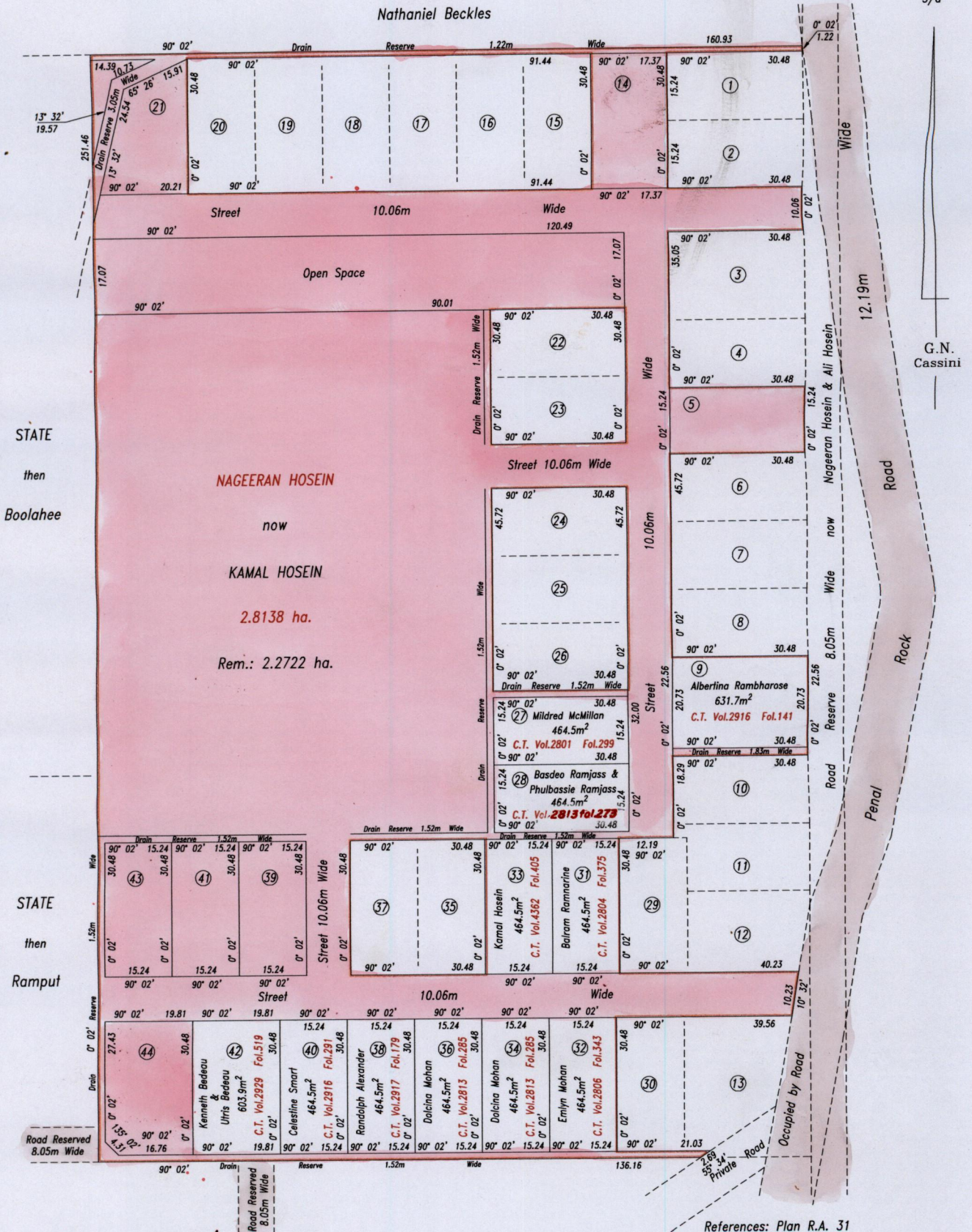
REMAINING PORTION

R.P.O. Vol. 83 Fol. 419
C.T. Vol. 2696 Fol. 495
U.P.R.N. No.:

Ward of Siparia
County of St. Patrick
Cadastral Sheet G.13.J. 63F
3/a

now 35

Nathaniel Beckles



STATE
then
Boolahee

STATE
then
Ramput

Approved
Lynn Roopchand
Director of Surveys
2006.8.2

References: Plan R.A. 31
Plan F.J. 75

SCALE 1: 1250

Distances are in metres

This is a true copy of a diagram of two point eight one three eight hectares originally transferred to NAGEERAN HOSEIN, showing a portion coloured pink and containing two point two seven two two hectares being the remainder after eleven (11) previous transfers of another portion of the land. In accordance with Regulation 25(1) of the Land Surveyors' Regulations 1998, I certify that this plan is correct.

Checked by *new 25/7/06*
Entered *L.A.R. 23/4/2006*
Trinidad & Tobago Land-Surveyor

