

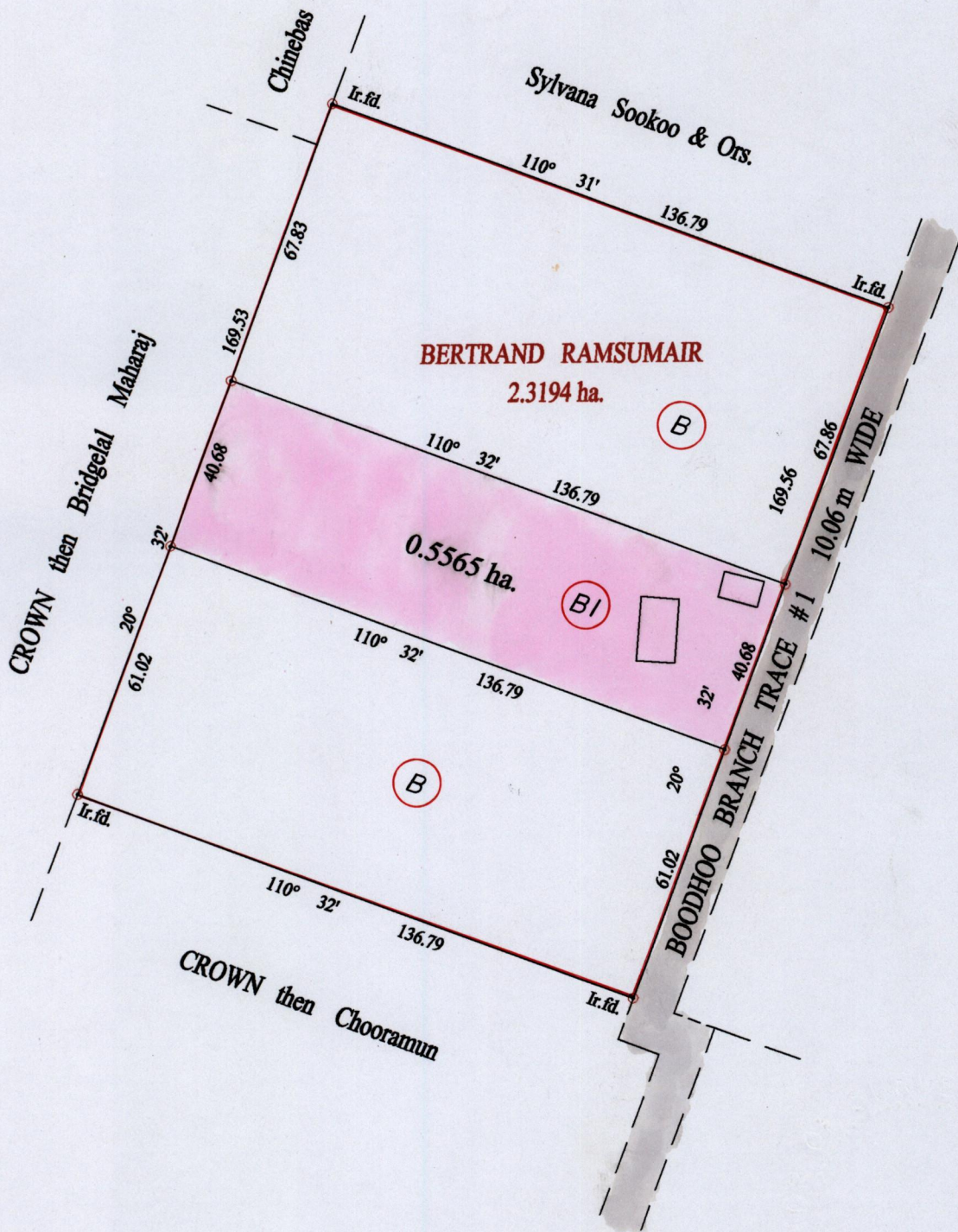
Not located

1375

44

R.P.O. Vol. 53 Fol. 275
C.T. Vol. 4309 Fol. 515

Ward of Naparima
County of Victoria
Cadastral Sheet (G.13.B) 63.F
1/b



Vide Bk.1200 fol.204

Approved *[Signature]*
Director of Surveys
2006-7-20

○ Denotes Iron put except stated otherwise.

SCALE : 1:1500

Note: Bearings are cassini grid based on solar observations

Distances are in metres

PLAN of a Parcel of land coloured pink in the Ward of Naparima

Containing zero point five five six five hectare

Surveyed by me, with due authority, in June 2005

In accordance with Regulation 25 (1) of the Land Surveyors' Regulations 1998,
I certify that this plan is correct.

Checked by *[Signature]* 26/6/06

Entered on Trinidad & Tobago Land Surveyor 13.02.2006

