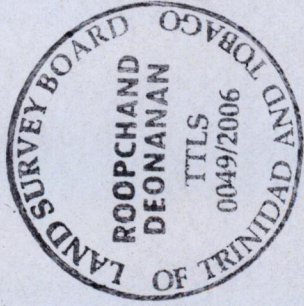
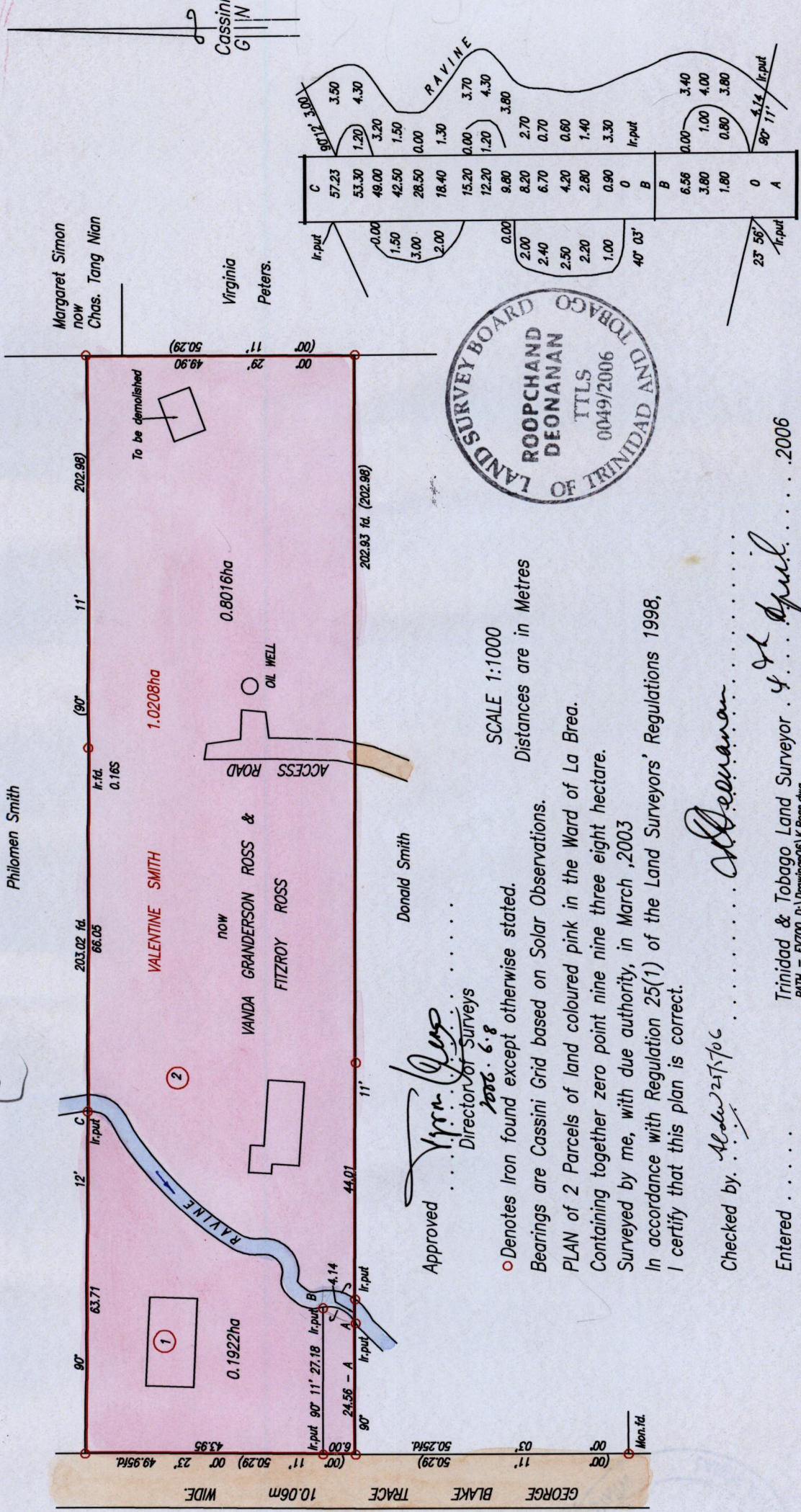


R.P.O. Vol. 58 Fol. 301  
 C.T. Vol. 747 Fol. 171  
 Vol 5519 Pd 381  
 Vide Bk. 725 fol. 127

Cadastral Sheet F.15. F. 62E  
 3/b  
 Ward of La Brea  
 County of St.Patrick.

1375

4



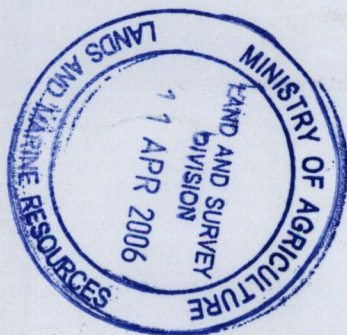
SCALE 1:1000  
 Distances are in Metres

Approved *Vivian Ross*  
 Director of Surveys  
 2006. 6. 8

○ Denotes Iron found except otherwise stated.  
 Bearings are Cassini Grid based on Solar Observations.  
 PLAN of 2 Parcels of land coloured pink in the Ward of La Brea.  
 Containing together zero point nine nine three eight hectare.  
 Surveyed by me, with due authority, in March, 2003  
 In accordance with Regulation 25(1) of the Land Surveyors' Regulations 1998,  
 I certify that this plan is correct.

Checked by *Aldean* 25/10/06  
 Entered .....  
 R. Deonanan  
 Trinidad & Tobago Land Surveyor  
 PATH = E:\700 d:\Drawing\06\K.Ross.dwg  
 2006

Lot*	GT. Volume *	Names
1		
2	Vol. SS'19 Fol. 393	KERWIN ROSS & KATE



1375/4