

R.P.O. Vol. 1 Fol. 285

C.T. Vol. Fol.

Vesting Order No. S-767 of 2001

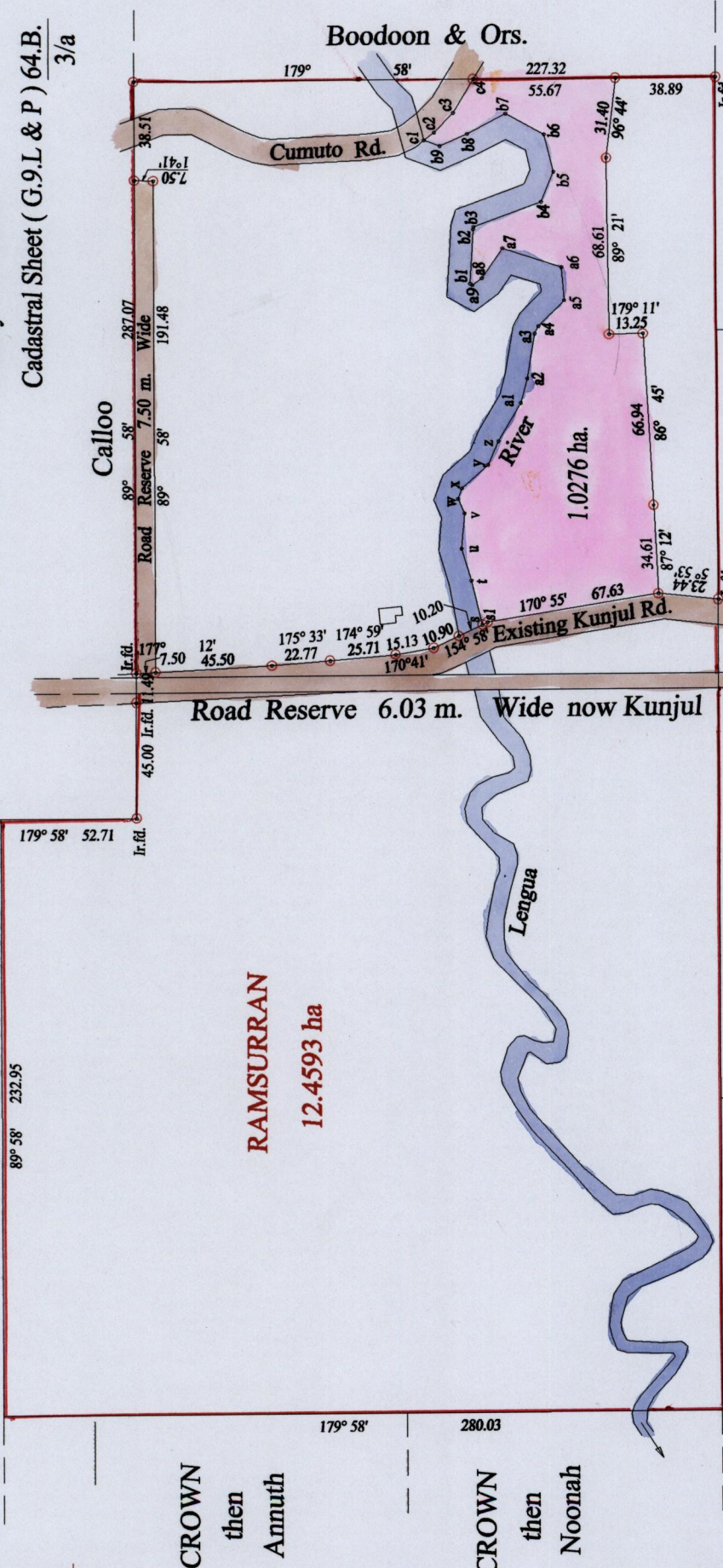
Beercootoolah

Ward of Savana Grande

County of Victoria

Cadastral Sheet (G.9.L & P) 64.B. 3/a

located (3)



CROWN then Annuth

CROWN then Noonah

CROWN then Chaitoo

CROWN then

Edward Callender

Jos. James

SCALE : 1:2500

Note: Bearings are cassini grid based on solar observations  
 PLAN of a Parcel of land coloured pink in the Ward of Savana Grande  
 Containing one point zero two seven six hectares  
 Surveyed by me, with due authority, in August 2004 to be vested to B. Balkaran  
 In accordance with Regulation 25 (1) of the Land Surveyors' Regulations 1998,  
 I certify that this plan is correct.



Vide Bk. 327 fol. 96  
Vide Bk. 327 fol. 46

Approved: *J. M. P. Pump*  
 Director of Surveys  
 2006 12 13

o Denotes Iron put except stated otherwise.

Checked by: *M. S. 15/11/06*

Entered on: ..... Trinidad & Tobago Land Surveyor ..... 24. 08. 2006

s - t	75° 50'	17.77	a3 - a4	118° 00'	3.21	b4 - b5	113° 19'	12.61
t - u	73° 40'	13.13	a4 - a5	134° 47'	14.29	b5 - b6	75° 40'	15.08
u - v	94° 37'	13.86	a5 - a6	85° 52'	12.82	b6 - b7	28° 47'	17.05
v - w	65° 23'	6.16	a6 - a7	17° 57'	24.35	b7 - b8	332° 34'	17.00
w - x	110° 44'	4.42	a7 - a8	304° 58'	13.96	b8 - b9	336° 56'	11.79
x - y	139° 00'	13.66	a8 - a9	324° 03'	4.66	b9 - c1	20° 45'	6.45
y - z	114° 41'	10.01	a9 - b1	28° 46'	0.98	c1 - c2	141° 31'	4.96
z - a1	120° 15'	17.32	b1 - b2	93° 13'	21.17	c2 - c3	134° 43'	10.64
a1 - a2	105° 04'	9.83	b2 - b3	108° 13'	0.92	c3 - c4	121° 24'	15.38
a2 - a3	99° 48'	17.84	b3 - b4	159° 58'	28.11	s - s1	154° 58'	2.31

1375/221