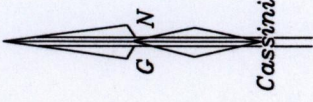
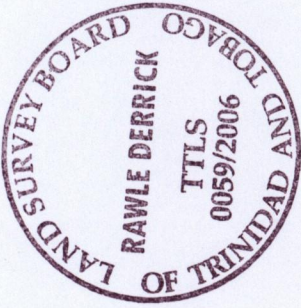


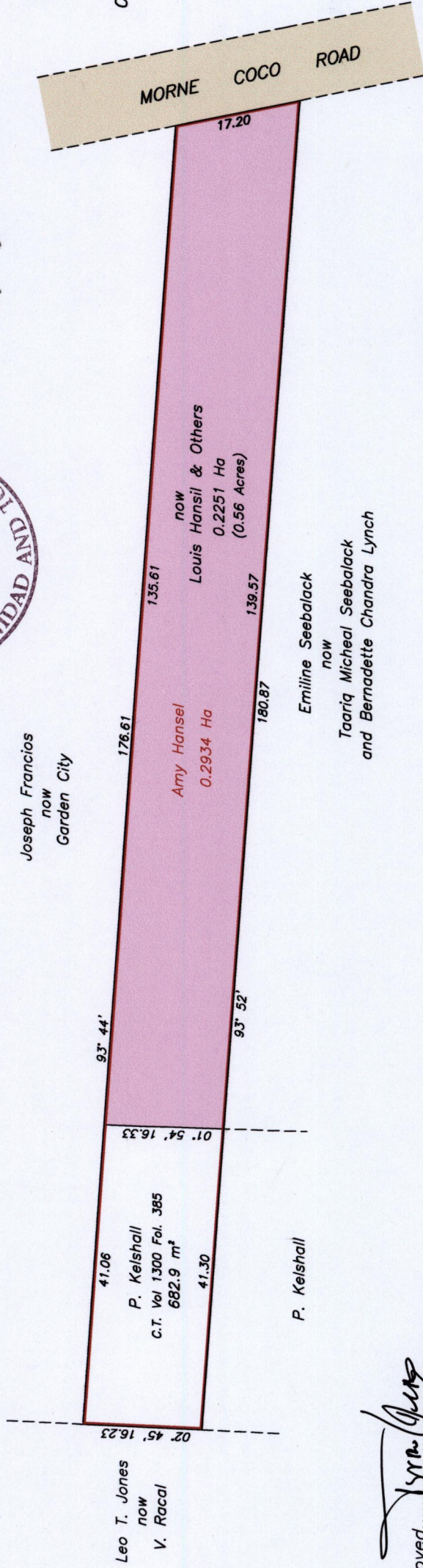
Ward of Diego Martin
County of St. George

PETIT VALLEY

Remaining Portion



cannot locate



Bk. 1017:63

SCALE 1/750

Distances are in metres

Approved.....
Director of Surveys
2006.6.13

Bearings are Cassini Grid based on Solar Observations
This is a true copy of a diagram of zero point two nine three four hectares originally transferred to Amy Hansil showing a portion coloured pink and containing zero point two five one hectares being the remainder after (1) one previous transfer of another portion of the land. In accordance with Regulation 25 (1) of the Land Surveyors' Regulations 1998, I certify that this plan is correct.

Checked By.....
2006.6.13

Entered On.....

.....
Rawle Derrick

Trinidad & Tobago Land Surveyor...
2006.6.13