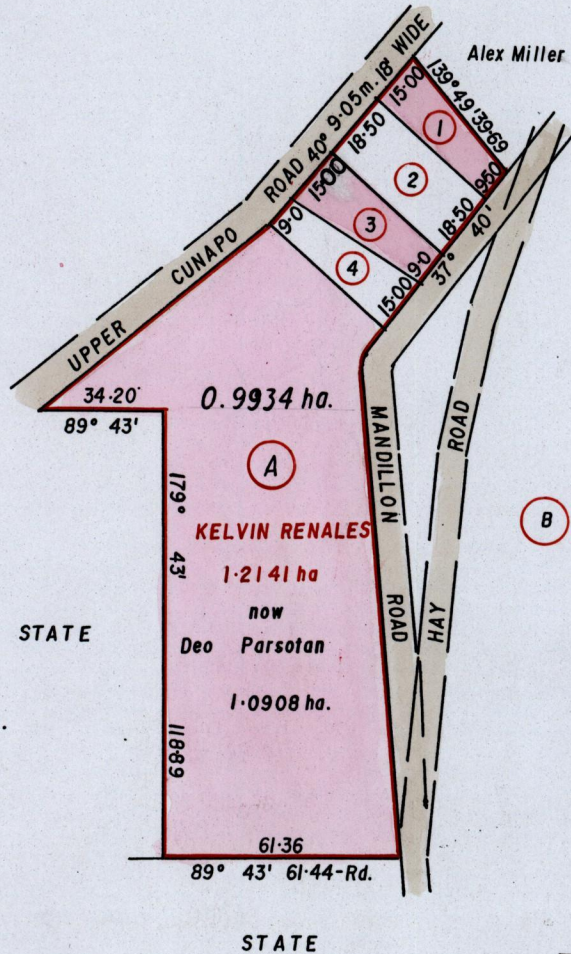


REMAINING PORTION

R.P.O. Vol. 23
C.T. Vol. 1993

Fol. 121
Fol. 389

Ward of Turure
County of St. Andrew
Cadastral Sheet E.2.B 25F
4/a



Located @

Lot 2	Preston Ephrain	739.2m ²
	C.T. Vol. 4445	Fol. 209
Lot 4	Felix Blandin & Ors.	494.1m ²
	C.T. Vol. 4434	Fol. 481

Approved.....
Director of Surveys
2006.12.15

SCALE 1/2000
Distances are in metres

This is a true copy of a diagram of One Point Two One Four One Hectares originally granted to KELVIN RENALES, shewing a portion coloured pink and containing One Point Zero Nine Zero Eight Hectares being the remainder after two previous transfers of another portion of the land. In accordance with Regulation 25(1) of the Land Surveyors' Regulation 1998, I certify that this plan is correct.

Checked by.....

Winston Ramcharan

Entered on..... Trinidad & Tobago Land Surveyor. 12th December..... 2006