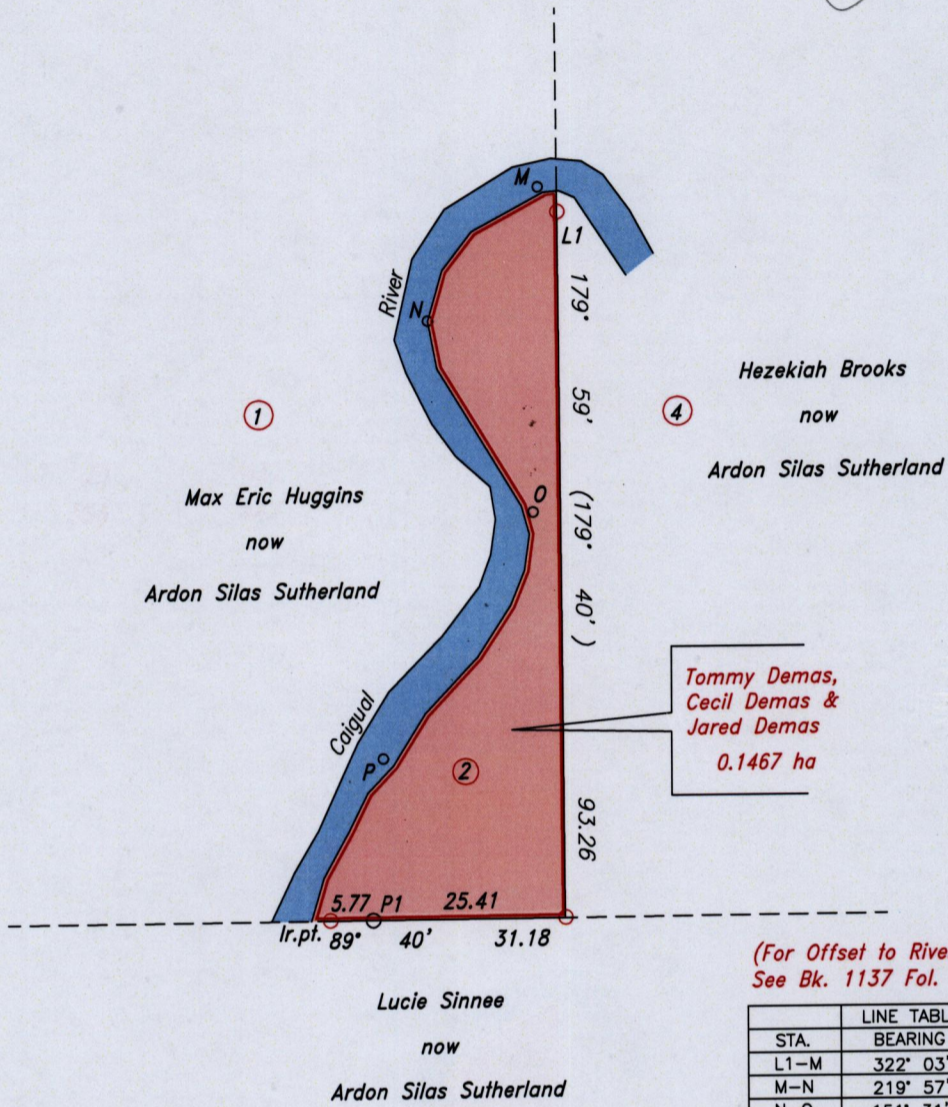
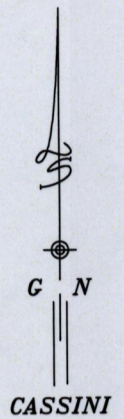


RPO Vol. 23 Fol. 431
CT. Vol. 3567 Fol. 447

Ward of Manzanilla
County of St. Andrew
Cadastral Sheet (E.3.E.), 26D
4/c

located
①



(For Offset to River Notes
See Bk. 1137 Fol. 79)

STA.	BEARING	DISTANCE
L1-M	322° 03'	4.12
M-N	219° 57'	22.85
N-O	151° 31'	28.95
O-P	211° 37'	38.20
P-P1	183° 52'	21.20

Approved.....
Director of Surveys
2006.12.07

○ Denotes Bottle fd. Iron pt. except otherwise stated.
Note: Bearings are Cassini grid based on solar observations.
To obtain compass bearing add 20 minutes.

Ref: Bk.161: 129
SCALE 1:1000
Distances are in metres.

Plan of a Parcel of land coloured pink in the Ward of Manzanilla
Containing zero point one four six seven hectare.
Redefined by me, with due authority, in June 2006.

In accordance with Regulation 25(1) of the Land Surveyors' Regulations 1998,
I certify that this plan is correct.

Checked by...
Entered

Trinidad & Tobago Land Surveyor

