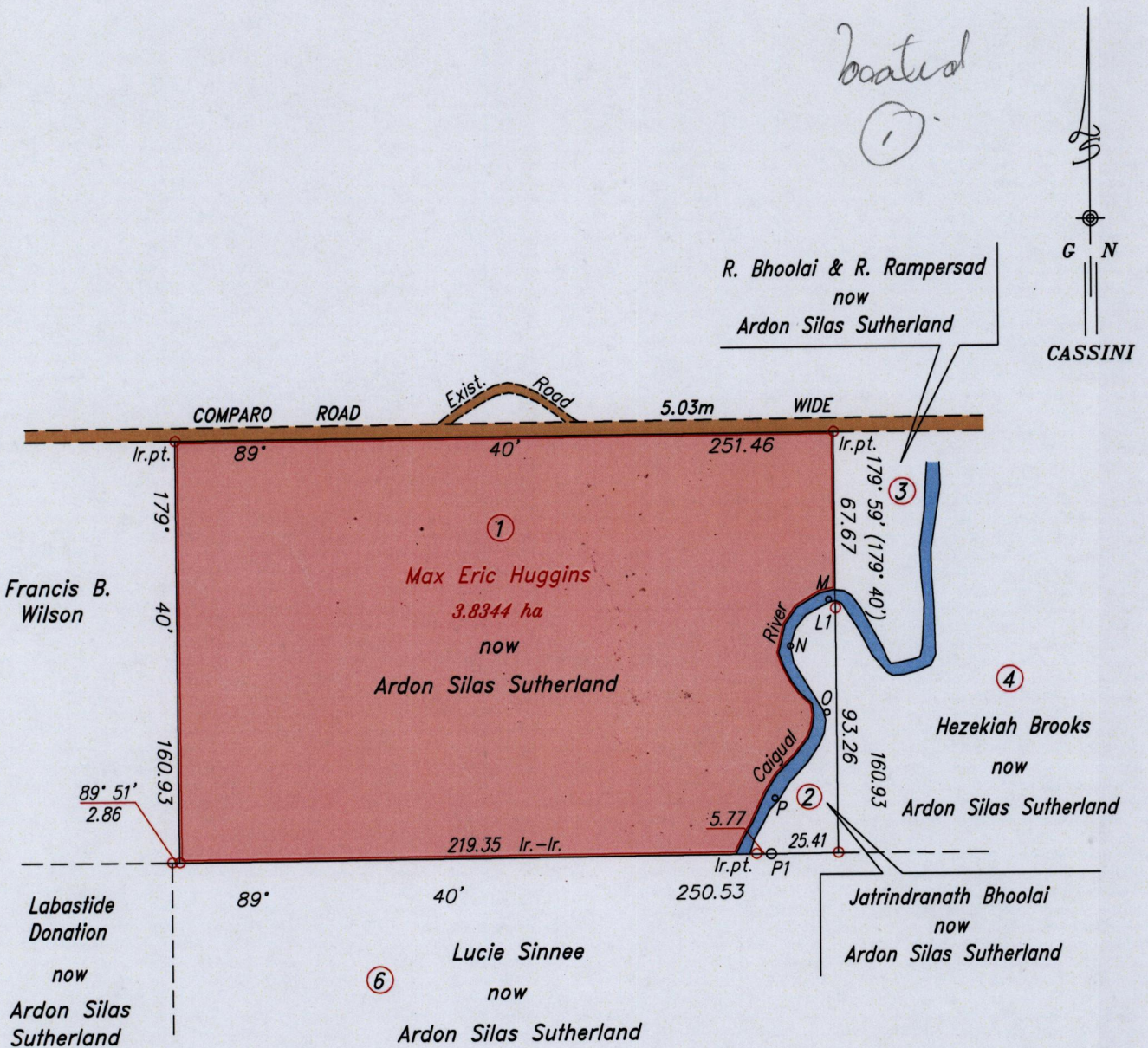


RPO Vol. 23 Fol. 431
CT. Vol. 2779 Fol. 565

Ward of Manzanilla
County of St. Andrew
Cadastral Sheet (E.3.E.), 26D
4/c



(For Offset to River Notes
See Bk. 1137 Fol. 79)

RIVER TRAVERSE		
STA.	BEARING	DISTANCE
L1-M	322° 03'	4.12
M-N	219° 57'	22.85
N-O	151° 31'	28.95
O-P	211° 37'	38.20
P-P1	183° 52'	21.20

Approved: *Tyrone Glegg*
Director of Surveys
2006.12.07

Ref: Bk.161: 129

SCALE 1:2500

Distances are in metres.

○ Denotes Bottle fd. Iron pt. except otherwise stated.
Note: Bearings are Cassini grid based on solar observations.
To obtain compass bearing add 20 minutes.

Plan of a Parcel of land coloured pink in the Ward of Manzanilla
Containing three point eight three four four hectares
Redefined by me, with due authority, in June 2006.

In accordance with Regulation 25(1) of the Land Surveyors' Regulations 1998,
I certify that this plan is correct.

Checked by: *MM 27/11/06*

Entered

Lenny Hanomansingh
Trinidad & Tobago Land Surveyor

