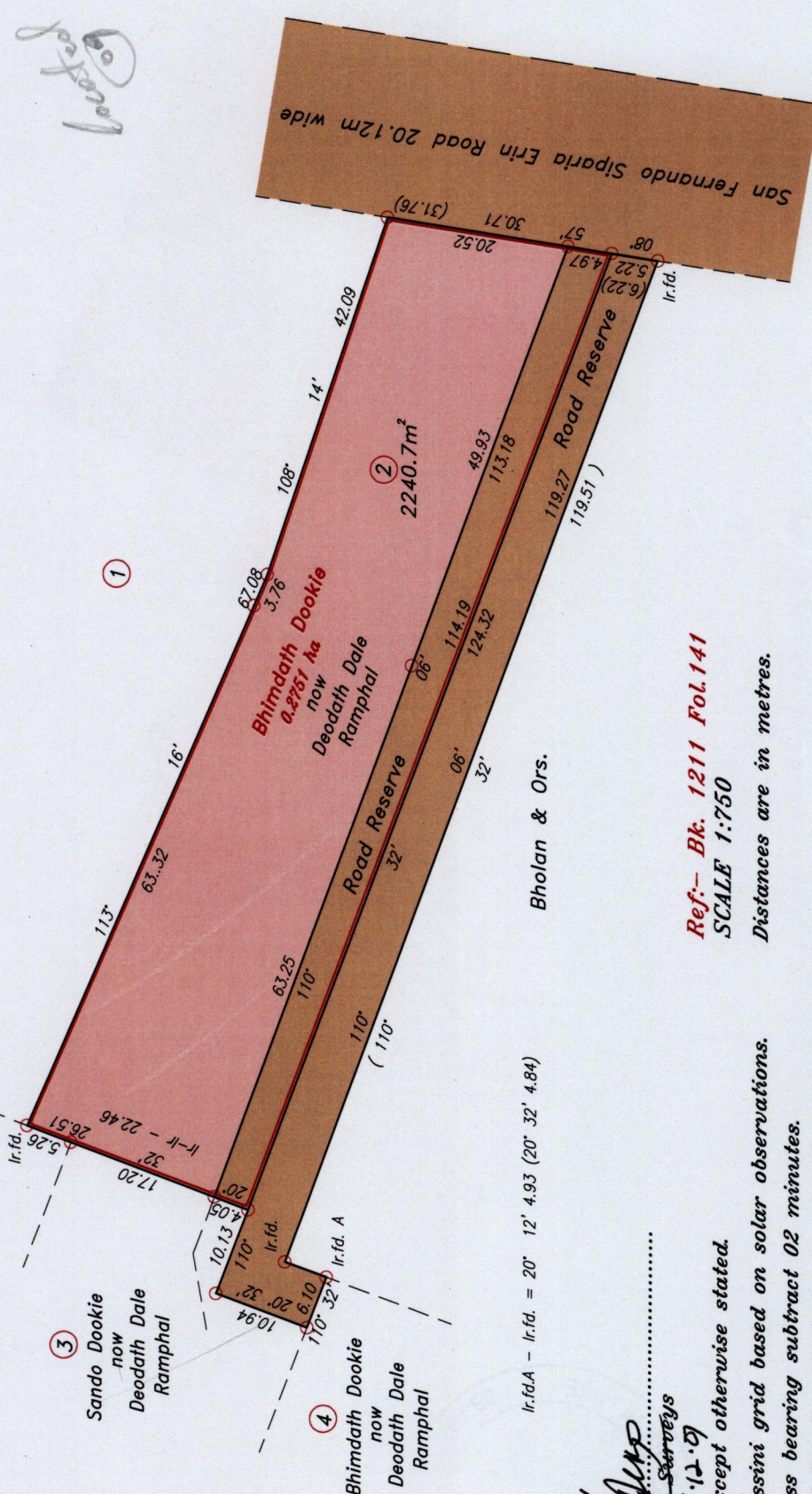


RPO Vol. 35 Fol. 573  
 CT. Vol. 3598 Fol. 177

Ward of Naparima  
 County of Victoria  
 Cadastral Sheet (G.8.N), 63C  
 (G.13.B) 3/c



1375

160

Approved.....  
 Director of Surveys  
 2006.12.07

○ Denotes Iron put except otherwise stated.

Note: Bearings are Cassini grid based on solar observations.

To obtain compass bearing subtract 02 minutes.

Plan of a Parcel of land coloured pink in the Ward of Naparima.

Containing two thousand two hundred and forty point seven square metres.

Surveyed by me, with due authority, in September 2003.

In accordance with Regulation 25(1) of the Land Surveyors' Regulations 1998

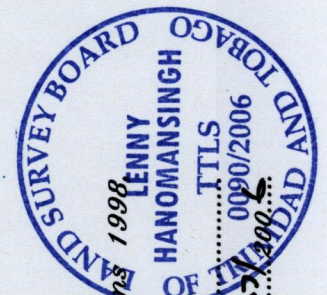
I certify that this plan is correct.

Checked by.....  
 M.M. 27/11/06

Entered .....

Ref:- Bk. 1211 Fol.141  
 SCALE 1:750

Distances are in metres.



Trinidad & Tobago Land Surveyor 1207/agg

1375/160