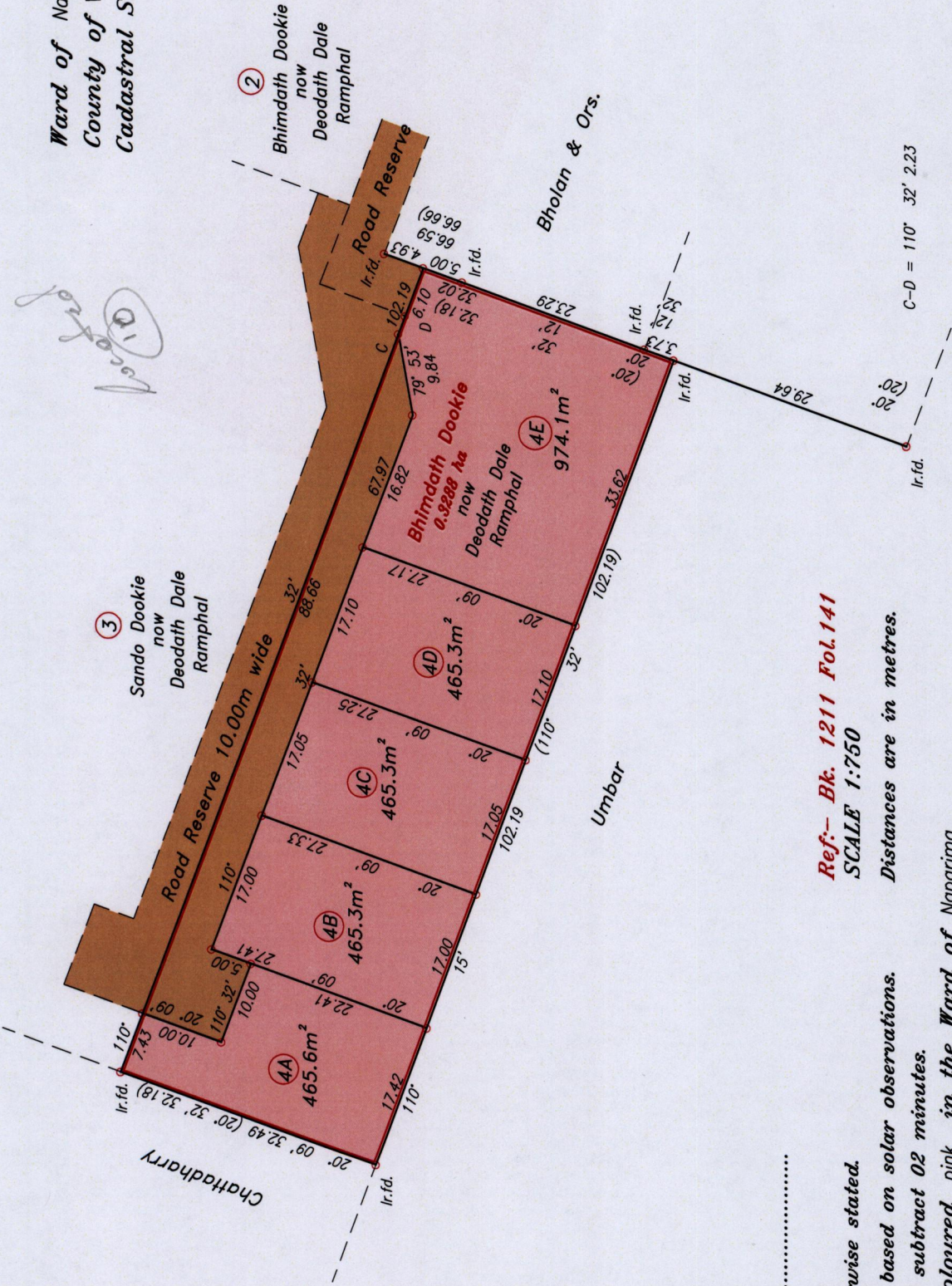
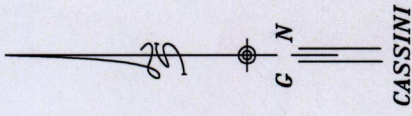


Ward of Naparima
County of Victoria
Cadastral Sheet (G.8.N), 63C
(G.13.B) 3/c



RPO Vol. 35 Fol. 573
CT. Vol. 3598 Fol. 179

Approved.....

Director of Surveys

2006.12.07

○ Denotes Iron put except otherwise stated.

Note: Bearings are Cassini grid based on solar observations.

To obtain compass bearing subtract 02 minutes.

Plan of 5 Parcels of land coloured pink in the Ward of Naparima.

Containing together two thousand eight hundred and thirty five point six square metres.

Surveyed by me, with due authority, in September 2003.

In accordance with Regulation 25(1) of the Land Surveyors' Regulations 1998

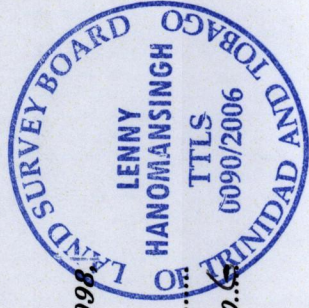
I certify that this plan is correct.

Checked by M.M. 27/11/06

Entered

Ref:- Bk. 1211 Fol.141
SCALE 1:750

Distances are in metres.



.....
Lenny Hanomansingh
Trinidad & Tobago Land Surveyor 07/12/2006