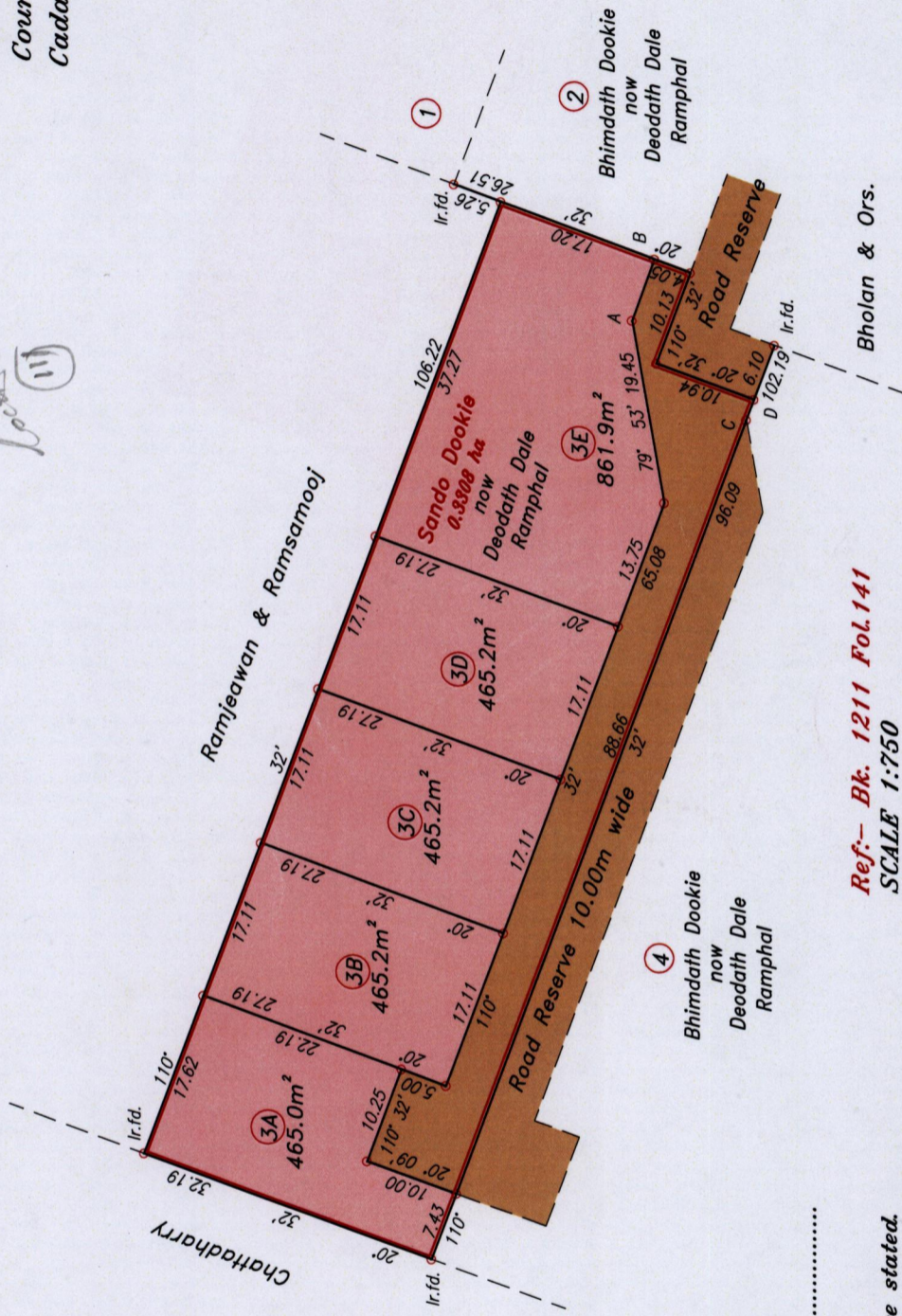
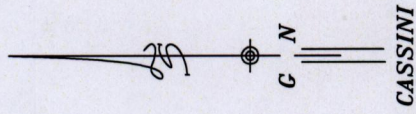


RPO Vol. 35 Fol. 573
 CT. Vol. 3598 Fol. 175

Ward of Naparima
 County of Victoria
 Cadastral Sheet (G.8.N), 63C
 (G.13.B) 3/C

1375/158 1375 1588



Ref:- Bk. 1211 Fol.141
 SCALE 1:750

Distances are in metres.

Note: Bearings are Cassini grid based on solar observations.

To obtain compass bearing subtract 02 minutes.

Plan of 5 Parcels of land coloured pink in the Ward of Naparima.

Containing together two thousand seven hundred and twenty two point five square metres.

Surveyed by me, with due authority, in September 2003.

In accordance with Regulation 25(1) of the Land Surveyors' Regulations 1998.

I certify that this plan is correct.

Checked by: *MM 27/11/06*

Entered

Approved: *[Signature]*
 Director of Surveys
 2006.12.07

○ Denotes Iron put except otherwise stated.



[Signature]
 Trinidad & Tobago Land Surveyor 15071.2006

A-B = 110° 06' 6.81
 C-D = 110° 32' 2.23