

R.P.O. Vol. 35 Fol. 535

C.T. Vol. 280 Fol. 5

Regrant. Vol. 804 Fol. 247

Ward of Turure

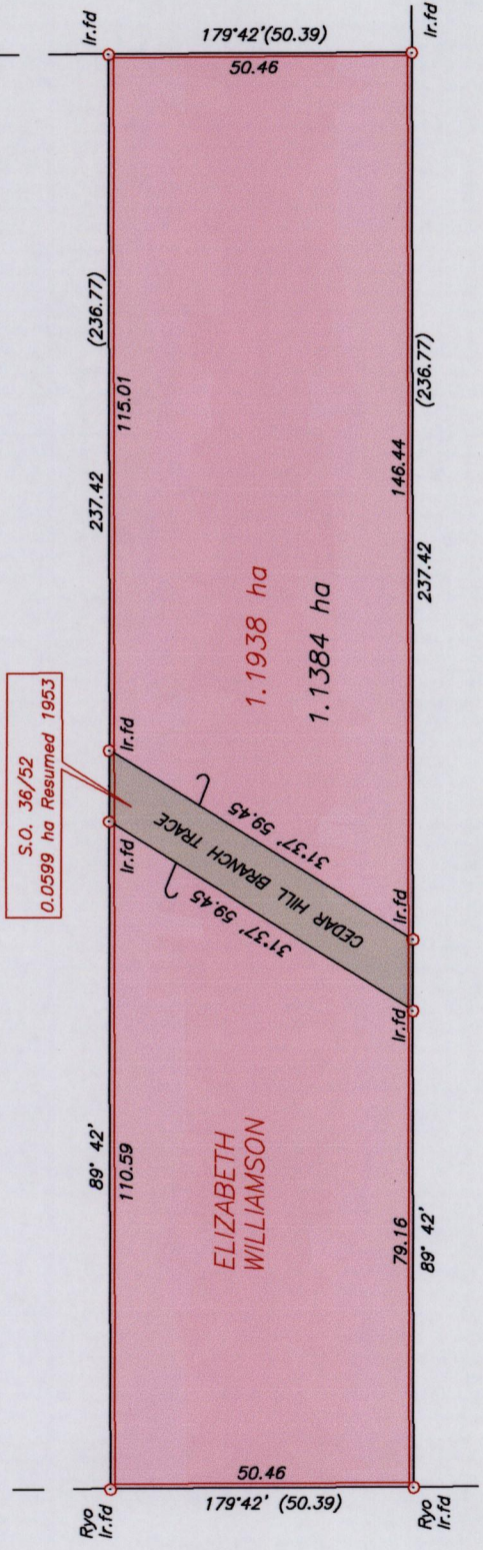
County of St. Andrew

Cadastral Sheet E.7.D.

36A  
3a&3b

S.O. 36/52  
0.0599 ha Resumed 1953

located  
(4)



Remijo Villafaña

ELIZABETH WILLIAMSON

1.1938 ha  
1.1384 ha

179°42' (50.39)  
50.46

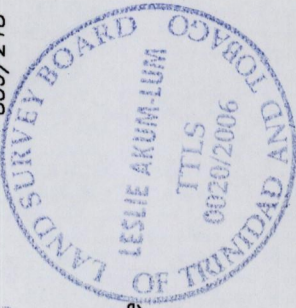
Susan Nicholas

Medelise Brunton

then State

then State

See B.K. 161/175  
710/238  
859/218



SCALE 1/1250

Distances are in metres

Note: To obtain compass bearings add 18 minutes.

PLAN of a Parcel of land coloured pink in the Ward of Turure  
Containing one point one three eight four hectares  
Surveyed by me, with due authority, in September 1990  
In accordance with Regulation 25 (1) of the Land Surveyors' Regulations 1998,

Approved  
Director of Surveys  
2006.11.30

I certify that this plan is correct.

Checked by: *Medelise Brunton*

Entered by: *L.B. off the line*

Entered..... Trinidad & Tobago Land Surveyor 16th October 2006

1375

1375/145

145