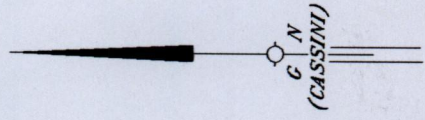


1375

1375/143

(1.20)

143

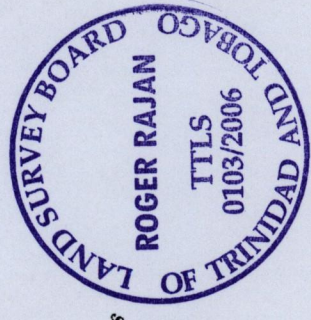
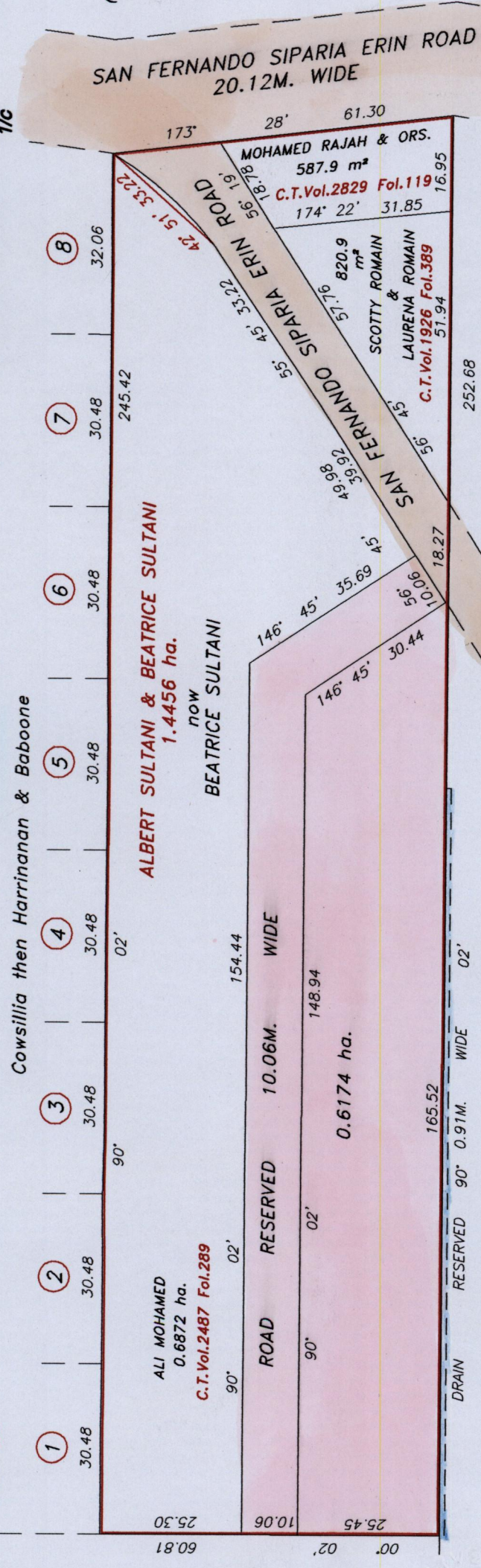


REMAINING PORTION PLAN

Ward of Siparia
County of St. Patrick
Cadastral Sheet G.13.F 63.F
1/c

R.P.O Vol. 63
C.T. Vol. 1073
U.P.R.N No.

Fol. 343
Fol. 435



Bk. 1053 Fol. 287
SCALE 1/1000

Note: Bearings are Cassini Grid based on Solar Observation
 Distances are in metres
 This is a true copy of a diagram of one point four four five six hectares originally, transferred to ALBERT SULTANI & BEATRICE SULTANI, shewing a portion coloured pink and containing zero point six one seven four hectare being the remainder after (3) three previous transfers of other portion of land.
 In accordance with Regulation 25 (1) of the Land Surveyors' Regulations 1998,
 I certify that this plan is correct.

Approved *[Signature]*
 Director of Surveys
 10th 1/130

Checked by *[Signature]*
 Entered *[Signature]* 2006

located (11)