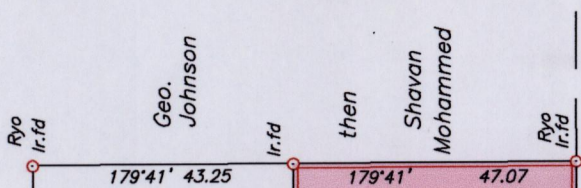
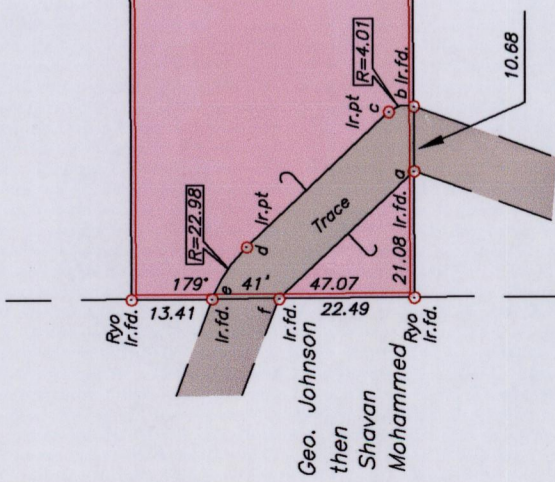


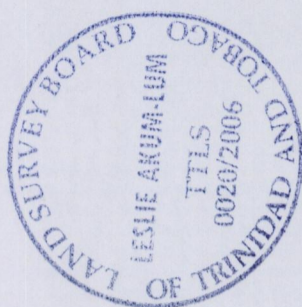
R.P.O. Vol. 19 Fol. 497
 C.T. Vol. 280 Fol. 5
 Regrant. Vol. 795 Fol. 273

Ward of Turure
 County of St. Andrew
 Cadastral Sheet E.2.P. 36A
 1/c&1/d

located
 (HB)



Dolly Willie
 89° 41'
 332.18 (332.13)
 ELIZABETH WILLIAMSON
 1.5631 ha
 1.5238 ha
 300.42
 332.18 (332.13)
 Geo. Johnson then Shavan Mohammed



SCALE 1/1250

Distances are in metres

Note: To obtain compass bearings add 19 minutes.

PLAN of a Parcel of land coloured pink in the Ward of Turure
 Containing one point five two three eight hectares
 Surveyed by me, with due authority, in September 1990

Approved
 Director of Surveys
 2006.11.30

See Bks. 161/113
 710/36

f-a 136°32' 30.82
 b-c 348°06' 4.22
 c-d 316°32' 32.54
 d-e 303°26' 10.42

In accordance with Regulation 25 (1) of the Land Surveyors' Regulations 1998,
 I certify that this plan is correct.

Checked by *AW/11/06*
 Entered..... Trinidad & Tobago Land Surveyor *16th October 2007*

1375

141