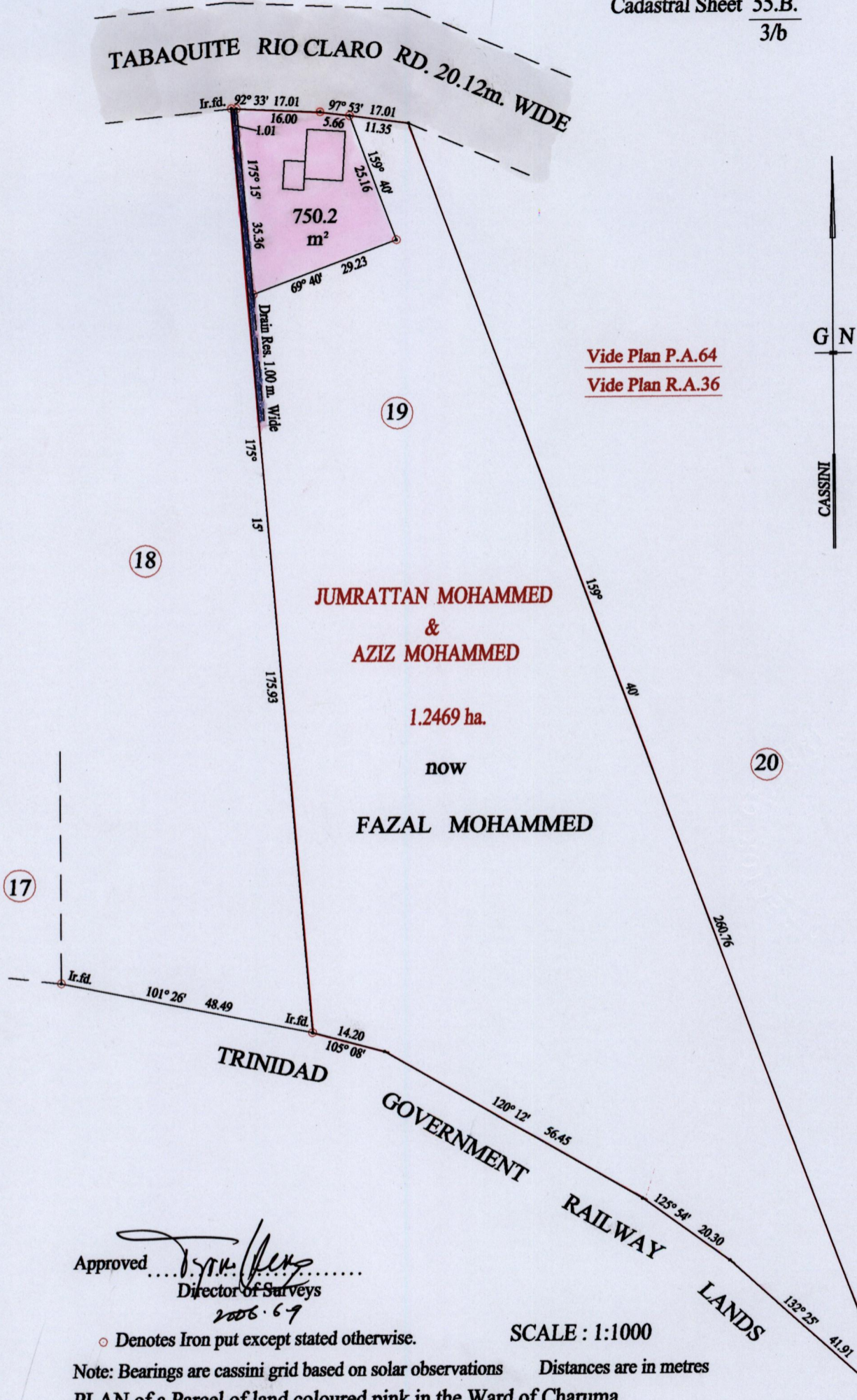


1375

located 12



Approved *[Signature]*  
Director of Surveys  
2006.6.9

o Denotes Iron put except stated otherwise.

SCALE : 1:1000

Note: Bearings are cassini grid based on solar observations Distances are in metres

PLAN of a Parcel of land coloured pink in the Ward of Charuma  
Containing seven hundred and fifty point two square metres  
Surveyed by me, with due authority, in September 2004

In accordance with Regulation 25 (1) of the Land Surveyors' Regulations 1998,  
I certify that this plan is correct.

Checked by *[Signature]* 5/06/06

Entered on ..... Trinidad & Tobago Land Surveyor ..... 9.05.2006

