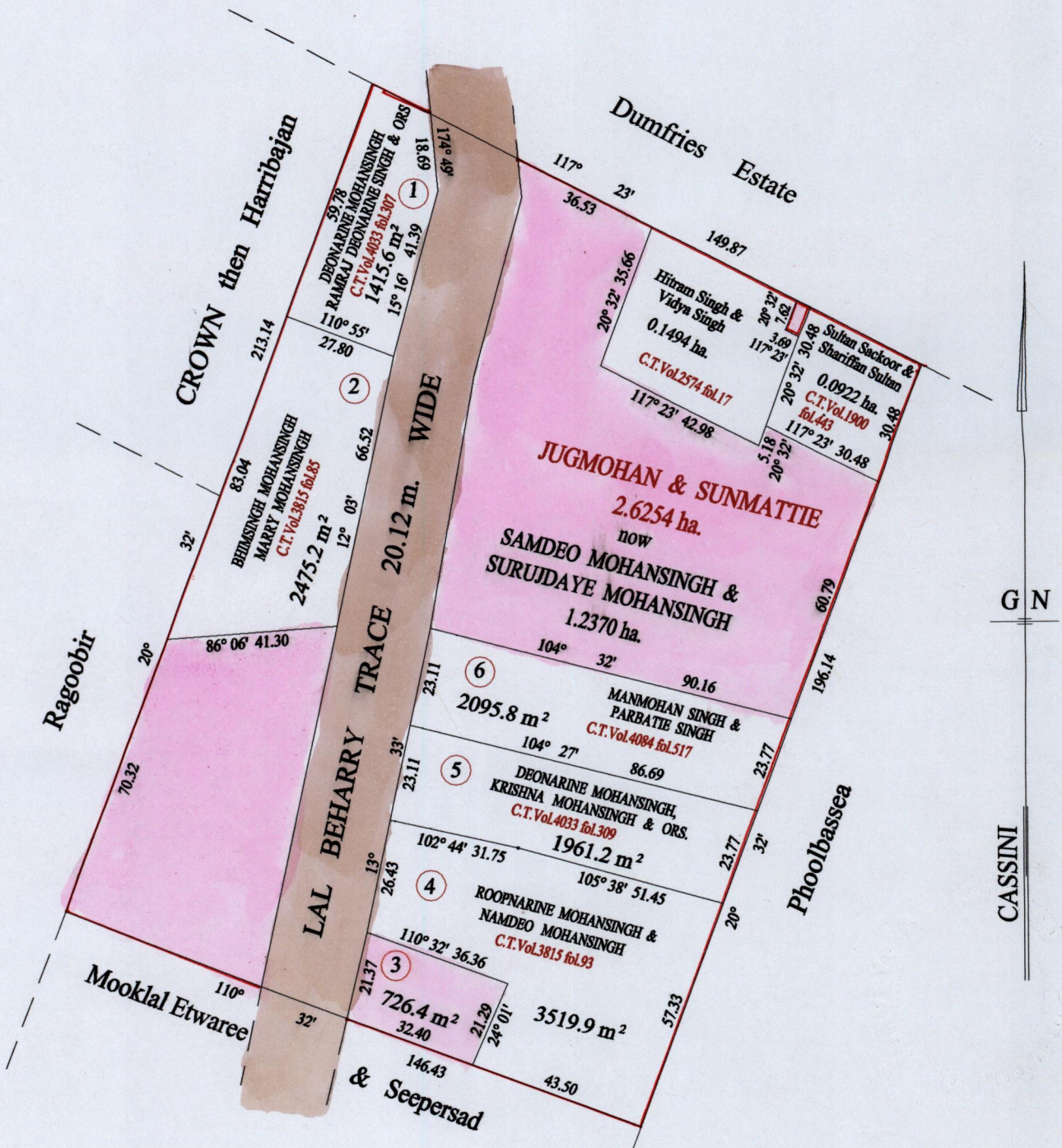


REMAINING PORTION

R.P.O. Vol. 23 Fol. 609  
C.T. Vol. 1423 Fol. 435

Ward of Naparima  
County of Victoria  
Cadastral Sheet ( G.8.0 ) 63.C  
3/d

located  
15



Vide Bk. 1227 fol. 74  
Vide Bk. 1163 fol. 49  
Vide Bk. 1117 fol. 141  
Vide Plan J. B. 139

Approved *[Signature]*  
Director of Surveys  
2006.11.10

SCALE : 1:1500

Note: Bearings are cassini grid based on solar observations

Distances are in metres

This is a true copy of a diagram of two point six two five four hectares, originally transferred to JUGMOHAN & SUNMATTIE, shewing a portion coloured pink and containing one point two three seven zero hectares being the remainder after seven (7) previous transfers of other portions of the land. In accordance with Regulation 25 (1) of the Land Surveyors' Regulations 1998, I certify that this plan is correct.

Checked by *[Signature]* 2006.11.7

Entered on ..... Trinidad & Tobago Land Surveyor ..... 2006

