

R.P.O. Vol. 13 Fol. 481

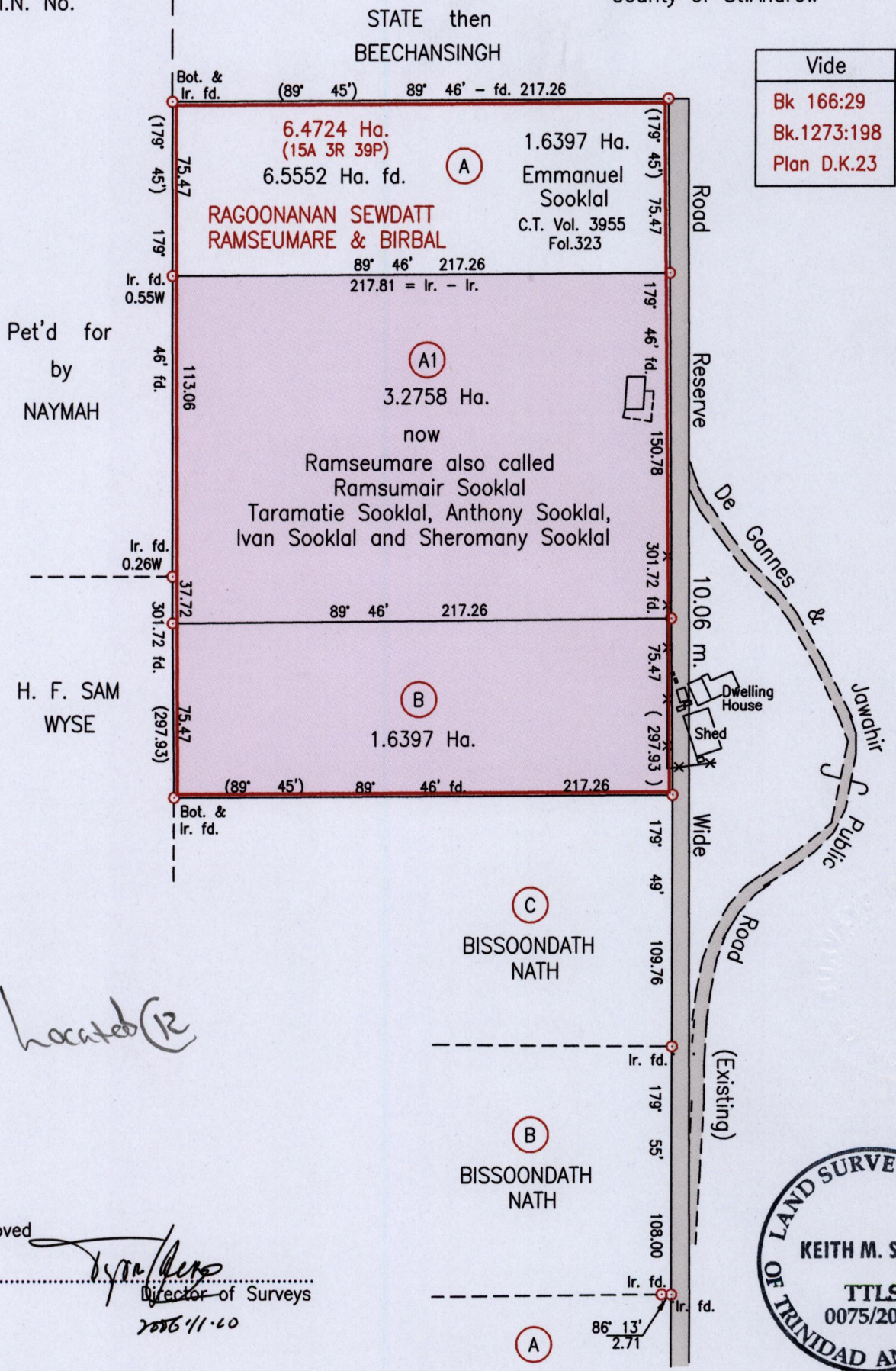
Cadastral Sheet $\frac{25E}{4/a \text{ \& } 4/c}$, E.I.G.

C.T. Vol. 1739 Fol. 479

Ward of Tamana

U.P.I.N. No.

County of St. Andrew



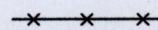
Bearings are Cassini Grid based on Solar Obs.

To obtain compass bearings add 15 minutes

SCALE 1:2500

Distances are in Metres

○ Denotes Iron Put unless otherwise stated



Denotes chain link wire fence

PLAN of 2 Parcels of land coloured pink in the Ward of Tamana

Containing together four point nine one five five hectares

Surveyed by me, with due authority, in October 1998

In accordance with Regulation 25(1) of the Land Surveyors' Regulations 1998,

I certify that this plan is correct.

Checked by *[Signature]* 2006/11/8

[Signature]

Entered on

Trinidad & Tobago Land Surveyor 19th September 2006

[Handwritten notes]