

R.P.O. Vol. 310 Fol. 361

C.T. Vol. 3470 Fol. 101

Ward of Siparia

County of St Patrick

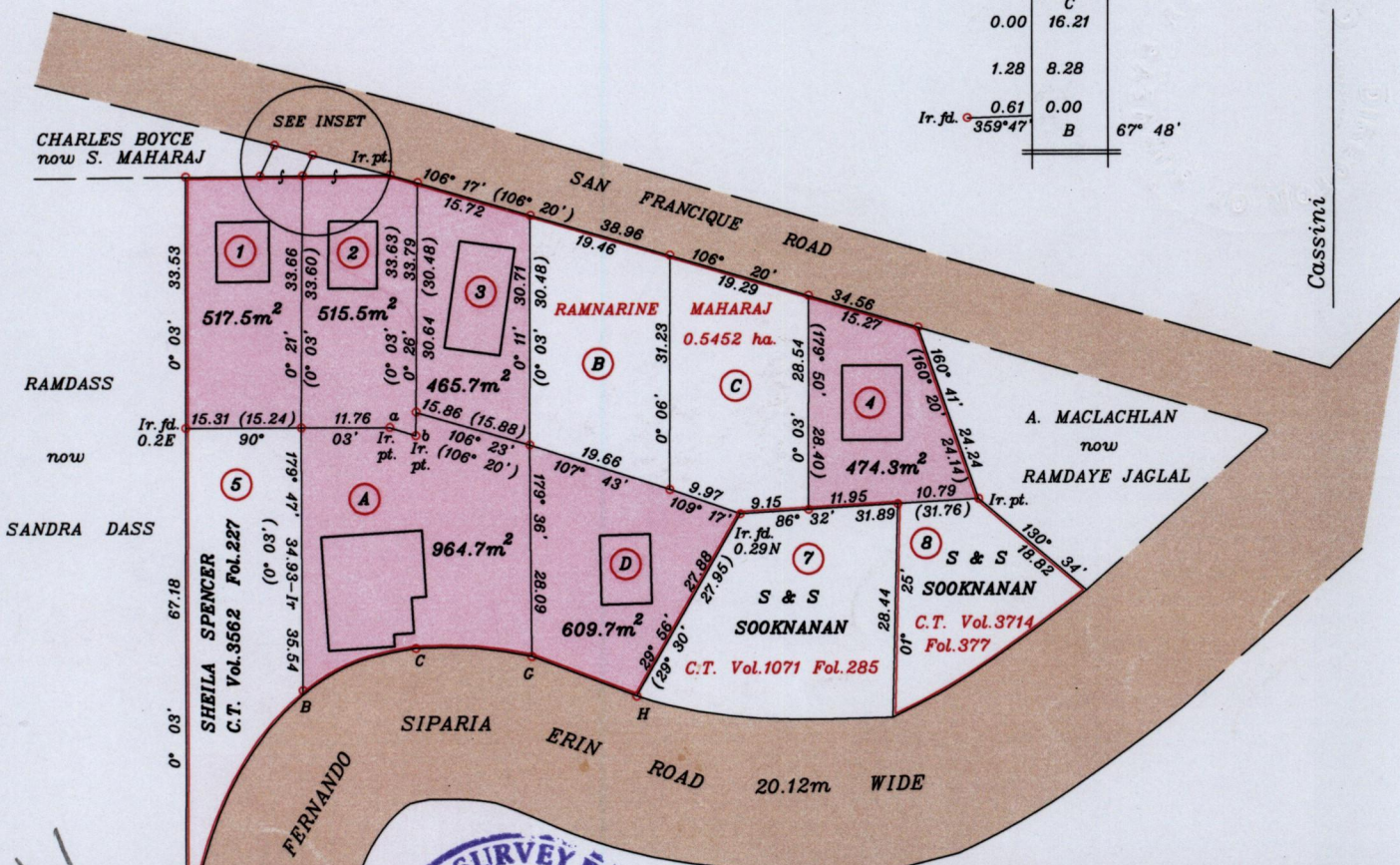
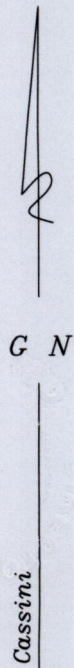
Cadastral Sheet G.13.I., 63E
4/6

VIDE Bk.489 fol.40

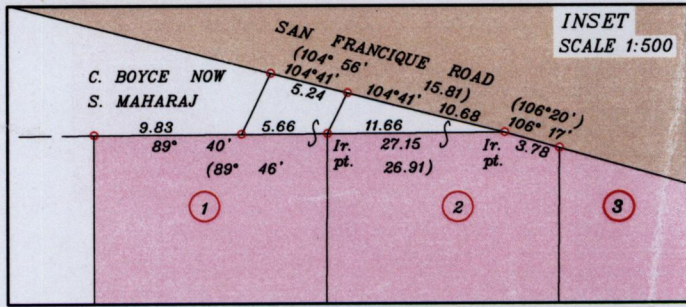
Bk.1211 fol.5

| Station | Bearing | Distance | Station |
|---------|---------|----------|---------|
| a | 107°45' | 3.68 | b |

| | | |
|---------|-------|---|
| 0.00 | 15.57 | H |
| 1.28 | 8.28 | |
| 0.00 | 0.00 | G |
| 0.00 | 15.57 | |
| 1.28 | 8.28 | |
| 0.00 | 0.00 | C |
| 0.00 | 16.21 | |
| 1.28 | 8.28 | |
| 0.61 | 0.00 | C |
| 359°47' | | B |



Located (12)



Approved *[Signature]*
 Director of Surveys
 2006.11.03

SCALE 1:1000

o denotes Ir.fld. unless otherwise stated

Distances are in metres

Bearings are Cassini Grid based on Solar Observations

PLAN of 6 Parcels of land coloured pink in the Ward of St. Patrick

Containing together three thousand five hundred and forty two point eight square metres

Surveyed by me, with due authority, in September 2005

In accordance with Regulation 25(1) of the Land Surveyors' Regulations 1998

I certify that this plan is correct.

Checked by *[Signature]* 9/10/06

[Signature]
 Elizabeth Ann Hamilton

Entered

Trinidad & Tobago Land Surveyor December 13 2005