

1369

96

Process ~~104~~ 69468

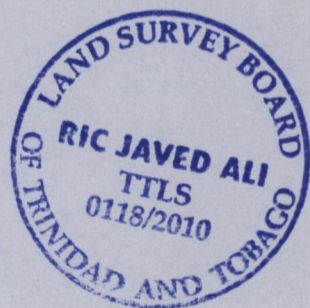
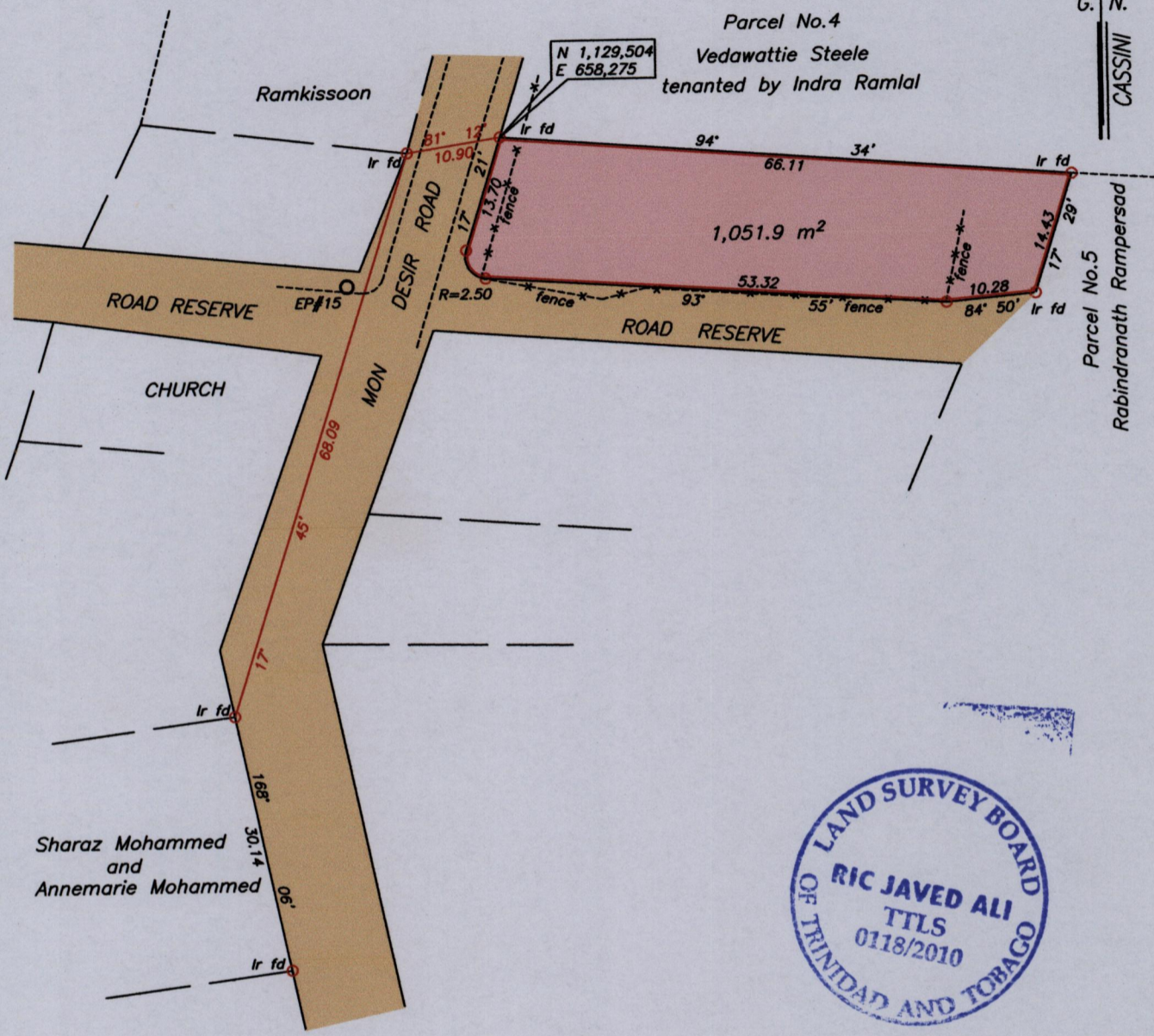
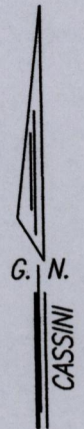
U.P.R.N No.....

Cadastral Sheet (G.6 L.) 63A
3/a

Ward of Siparia

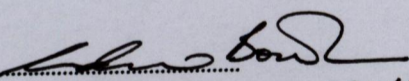
County of St. Patrick

To be brought under the provisions of the
Real Property Ordinance



SCALE 1/750

Distances are in metres
Co-ordinate are based on GPS finding
Naparima U.T.M. Zone 20
-/+ 3.00m

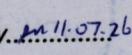
Approved by 
Director of Surveys 2011.8.11

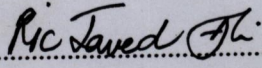
○ Denotes Iron put unless otherwise stated
Bearings are Cassini Grid based on Solar Observations
Note : To obtain U.T.M. bearings subtract 18 minutes

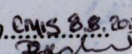
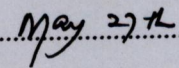
Plan of a Parcel of land coloured pink in the Ward of Siparia
Containing one thousand and fifty one point nine square metres

Surveyed by me, with due authority on the 14th October 2009 and 17th April 2010 for Indra Ramlal
In accordance with Regulation 25 (1) of the Land Surveyors' Regulations 1998,

I certify that this plan is correct.

Checked by  11.07.26



Entered on  Trinidad and Tobago Land Surveyor  27th 2010