

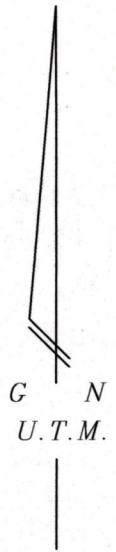
Process JD# 31175

To be brought under the provisions of the Real Property Ordinance.

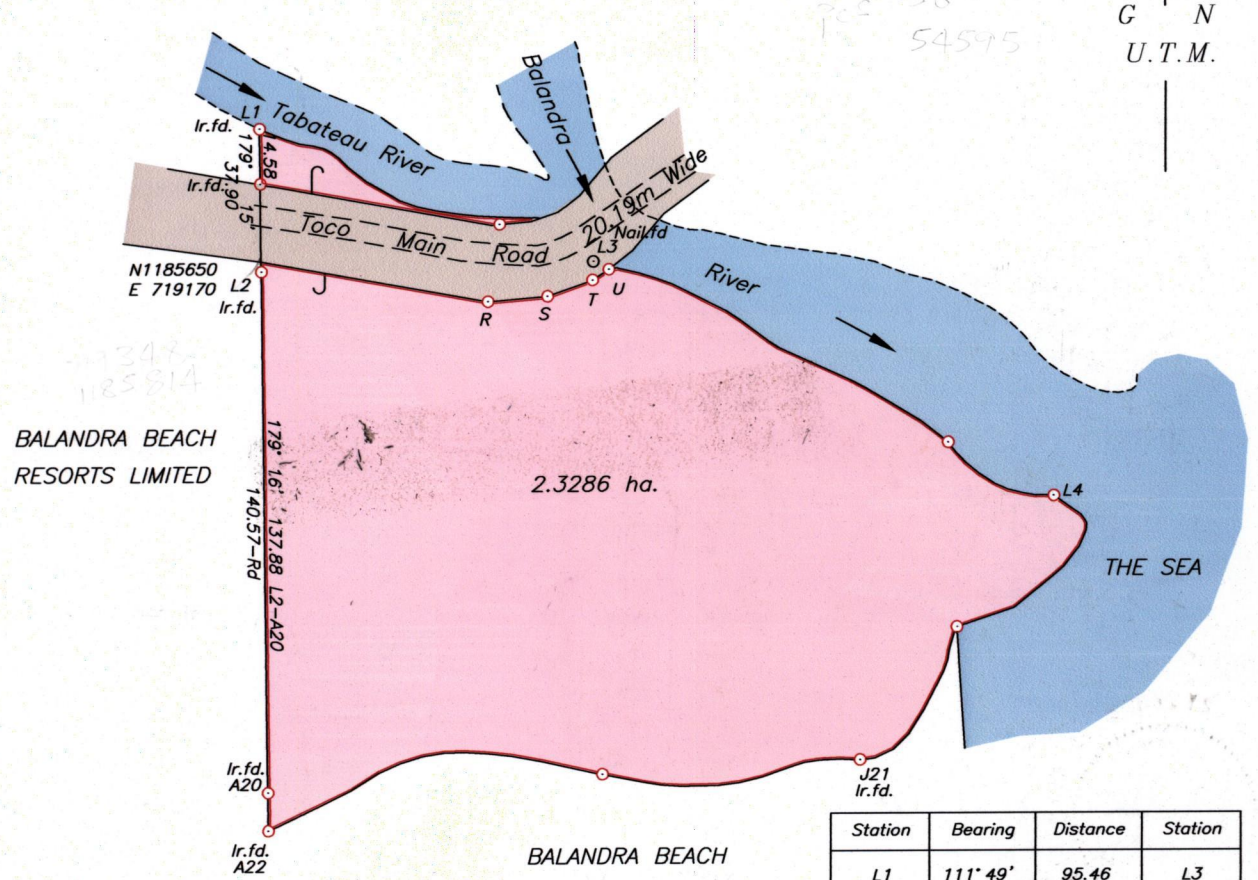
Cadastral Sheet C.14.F. 16C / 3/a

Ward of Matura

County of St. Andrew



56213
54545



BALANDRA BEACH RESORTS LIMITED

BALANDRA BEACH RESORTS LIMITED

Station	Bearing	Distance	Station
L1	111° 49'	95.46	L3
L3	117° 08'	136.79	L4
L4	216° 12'	86.40	J21
J21	267° 01'	157.27	A20
A20	179° 18'	10.11	A22
L2	88° 25'	88.16	L3
L2	97° 42'	60.66	R
R	85° 02'	15.86	S
S	70° 24'	12.70	T
T	56° 45'	5.17	U
U	117° 08'	132.21	L4

Approved

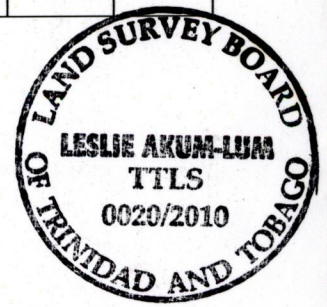
[Signature]
Director of Surveys 2011.6.16

JL-197
See Plan JA.93
Bk.120/102
Bk.120/107
Bk.997/16

PTO for Field notes

○ Denotes Iron put except where otherwise indicated.
Co-ordinates are UTM zone 20N Naparima Datum +/-5m scaled from L.&S. 1/10000 sheet.
Bearings are U.T.M. grid based on Magnetic Needle
Note: To obtain compass bearings add 27 minutes.

SCALE 1/2000
Distances are in metres



PLAN of a Parcel of land coloured pink in the Ward of Matura
Containing two point three two eight six hectares
Surveyed by me, with due authority, in 15th & 30th April 2009

for Maritime Life (Caribbean) Limited.

In accordance with Regulation 25 (1) of the Land Surveyors' Regulations 1998,
I certify that this plan is correct.

Checked by *[Signature]*
Entered *[Signature]* Trinidad & Tobago Land Surveyor *[Signature]* 3rd April 2010

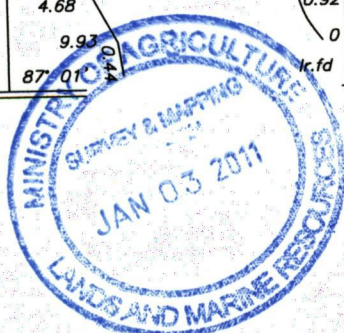
lr.pt	L4	
	86.40	8.34
	86.16	10.33
	85.61	11.43
	84.03	12.45
	82.25	12.88
	79.33	13.48
	73.03	13.36
	68.86	12.45
	56.32	9.24
lr.pt	43.30	0
	41.75	0.37
	40.31	0.81
	37.27	1.95
	34.76	3.21
	31.46	4.21
	20.49	5.92
	13.29	6.44
	7.62	5.58
	2.70	2.86
	0	0
lr.fd	J21	36° 12'

lr.fd	J21	
	157.27	
	152.01	0.48
	146.61	0.55
	142.46	0.16
	141.86	0
	138.81	0.84
	131.19	3.11
	125.27	4.18
	119.36	4.63
	109.40	4.36
	104.41	3.76
	97.78	2.75
	88.87	0
	86.33	0.64
	73.13	4.29
	64.96	6.25
	58.71	7.25
	52.88	7.83
	47.44	8.07
	41.56	7.42
	35.42	5.90
	29.85	3.76
	23.20	0
	22.34	0.49
	12.58	4.68
	0	9.93
lr.fd	A20	87° 01'

lr.pt	R	
	60.66	
	0	
	L2	97° 43'

lr.pt	U	
	132.21	0
	130.28	1.39
	124.46	2.79
	120.07	3.61
	115.61	4.18
	110.96	4.22
	105.16	4.23
	99.52	4.29
	94.98	3.73
	90.95	3.10
	85.61	2.15
	82.74	1.94
	77.99	2.21
	61.87	2.93
	56.98	2.91
	52.32	2.60
	40.06	1.73
	35.06	0.81
	0	0
	31.24	0
	27.76	1.59
	24.21	2.82
	20.36	3.67
	15.44	4.19
	11.50	4.00
	7.37	3.03
	4.15	1.98
	1.92	0.92
	0	0
lr.fd	L4	297° 08'

Nail.fd	L3	
	95.46	
	78.02	
	76.47	
	76.13	
	71.28	
	68.62	0 lr.pt.
	66.69	0.99
	62.58	0
	57.60	1.38
	51.76	2.80
	46.54	3.68
	41.47	3.85
	36.65	3.13
	31.56	2.43
	25.88	0.79
	24.05	0
	22.57	0.64
	20.14	1.29
	17.66	1.59
	14.89	1.13
	11.37	0.32
	9.41	0.05
	7.44	0
	5.62	0
	5.60	0
	0	0
	0	0
lr.fd	L1	111° 49'



1369/91