

1369

65

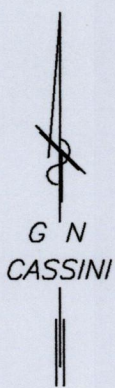
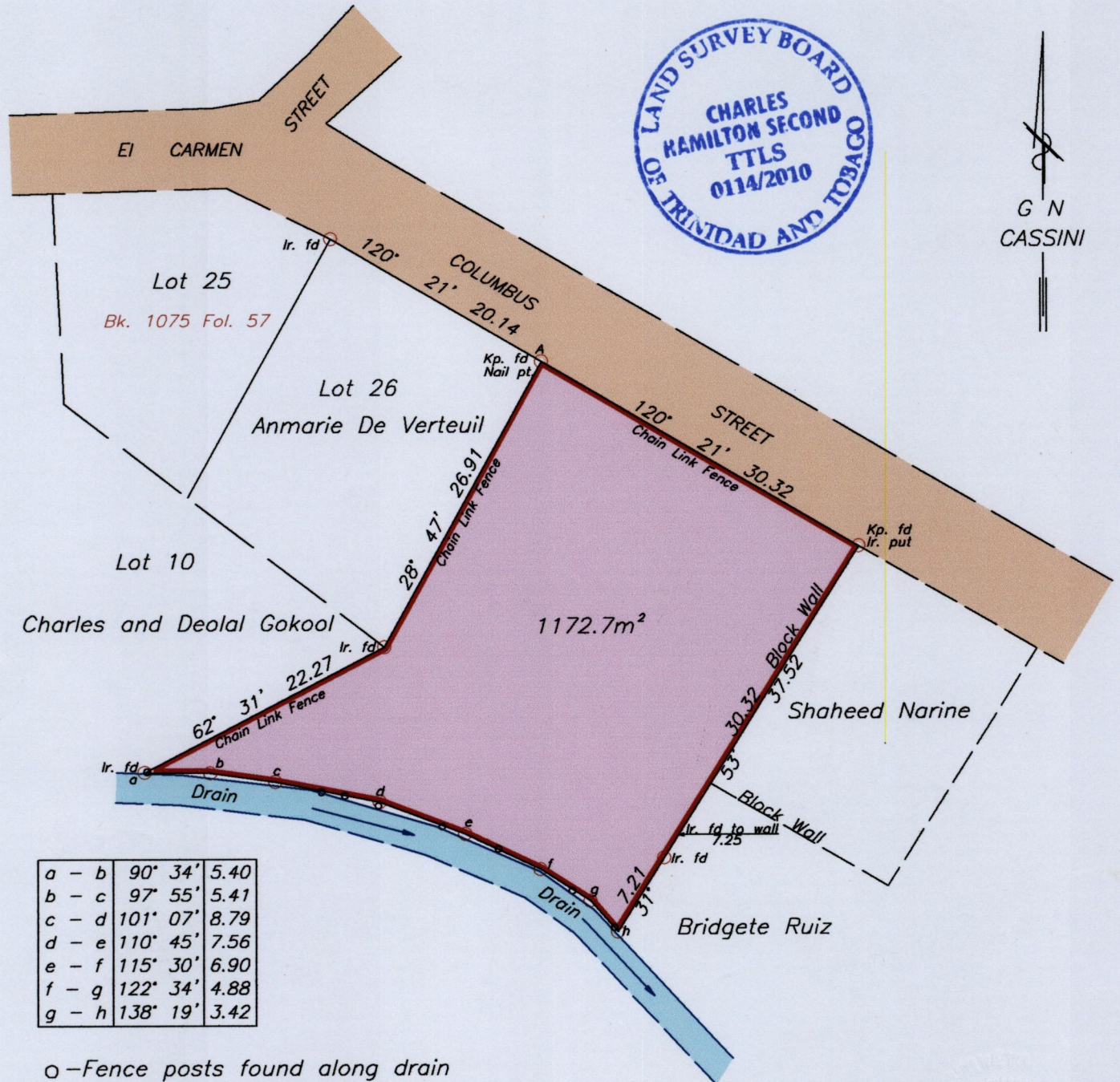
Process Jd# 69502

Cadastral Sheet ^{24C}/_{17b}, B.19.P.

To be brought under the Provisions of the Real Property Ordinance

Ward of Arima
County of St. George

R.D. No. 3824 of 1943



o - Fence posts found along drain

Approved

 Director of Surveys 2011. 2. 25

A: E:688038
 N:1176937
 ±3m by hand held GPS

UTM Zone 20
 Naparima Datum

SCALE 1:500
 Distances are in METRES

o Denotes Iron put unless otherwise stated
 Bearings are Cassini Grid based on solar observations.

PLAN of a Parcel of land coloured pink in the Ward of Arima
 Containing one thousand one hundred and seventy-two point seven square metres
 Surveyed by me, with due authority, on 12th August and 16th October 2010, for Mary Tang Yuk
 In accordance with Regulation 25 (1) of the Land Surveyors' Regulations 1998,
 I certify that this Plan is correct.

Checked by mm 22/2/2011
 Entered on SMS 30.07.2013
 Trinidad & Tobago Land Surveyor
Charles H. Second T.T.L.S.
 26th October 2010