

Process ID# 69501

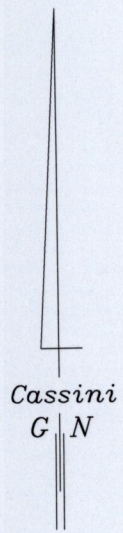
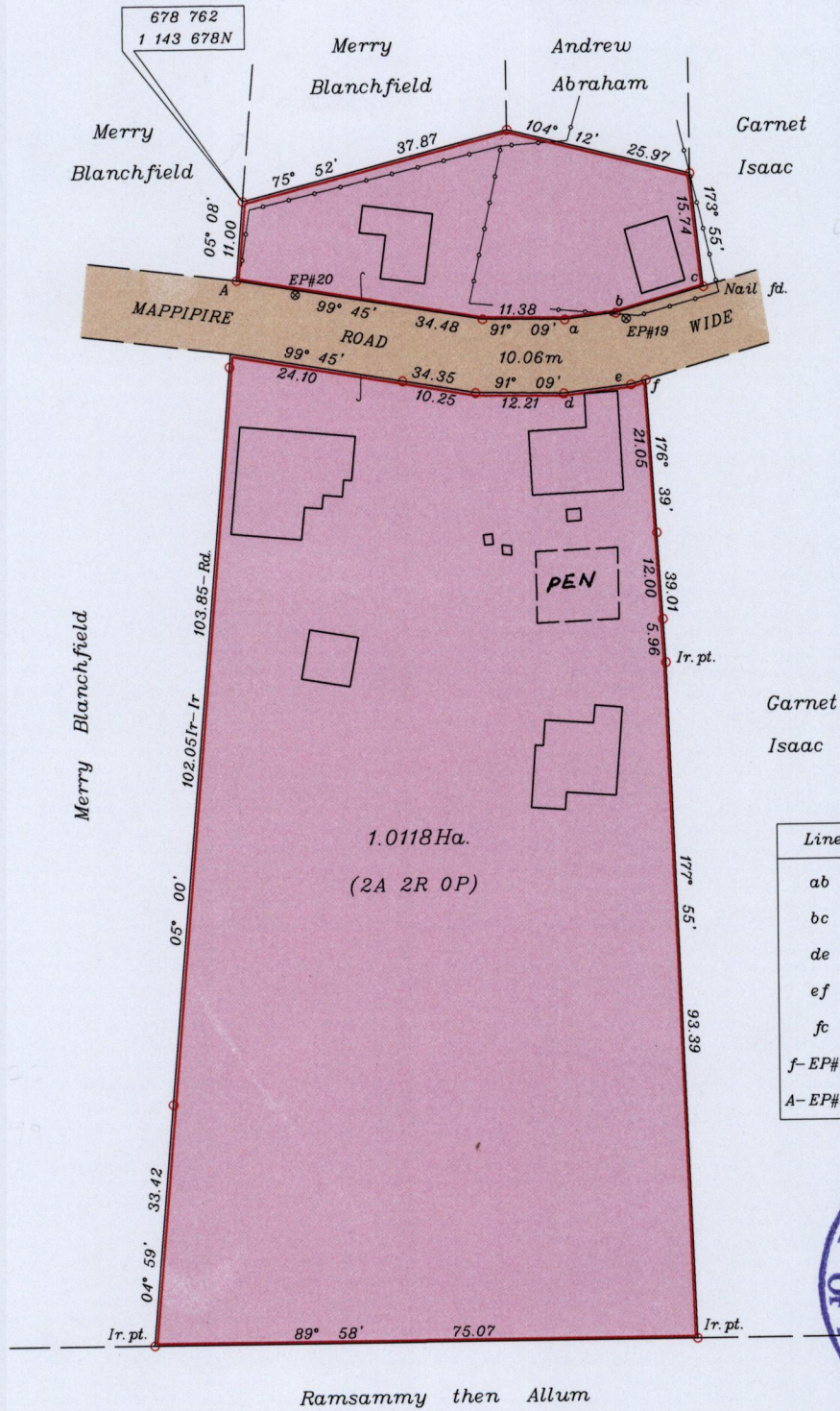
369/60
1369

60

To be brought under the provisions
of the Real Property Ordinance

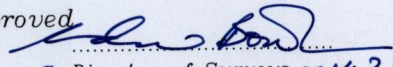
Ward of Pointe a Pierre
County of Victoria
Cadastral Sheet D.23.G., 54A
2/b

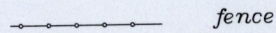
VIDE Bk.1254 fol.9



Line	Bearing	Distance
ab	83° 23'	7.11
bc	74° 13'	12.60
de	83° 23'	9.37
ef	74° 13'	2.15
fc	32° 26'	15.10
f-EP#19	342° 56'	8.87
A-EP#20	104° 21'	8.36



Approved 
Director of Surveys 2011. 2. 16



Co-ordinates are U.T.M. Zone 20 Naparima Datum +/-5m
obtained from handheld G.P.S.

SCALE 1:1000

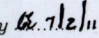
o denotes Ir. fd. unless otherwise stated

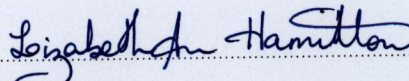
Bearings are Cassini Grid based on Solar Observations

Distances are in metres

PLAN of a Parcel of land coloured pink in the Ward of Pointe a Pierre
Containing one point zero one one eight hectares

Surveyed by me, with due authority, on July 30 2009 for Patrick Hackshaw
In accordance with Regulation 25(1) of the Land Surveyors Regulations 1998,
I certify that this plan is correct.

Checked by 



Entered CMS 19.07.2013

Trinidad & Tobago Land Surveyor July 23 2010