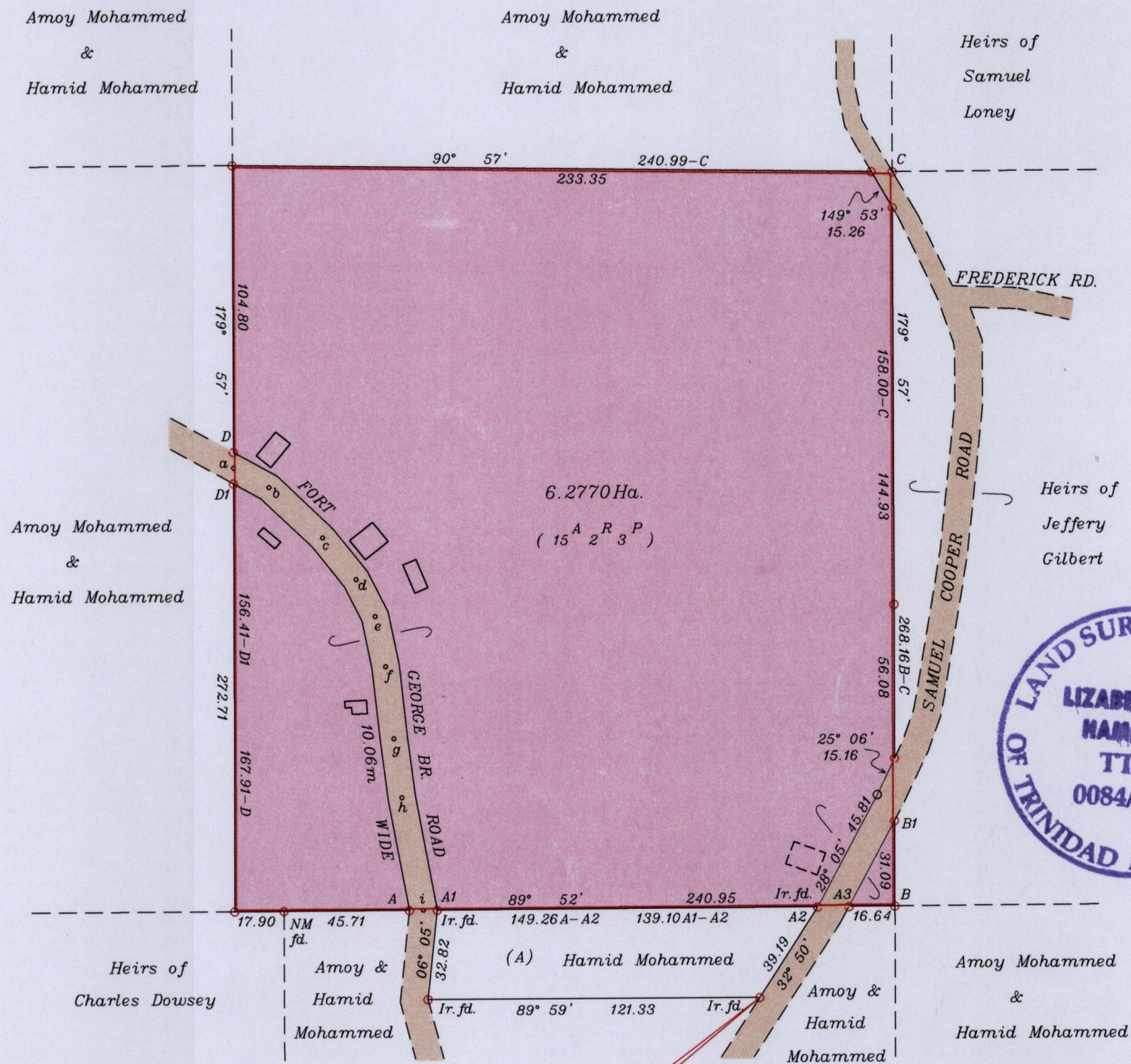


To be brought under the provisions of the Real Property Ordinance

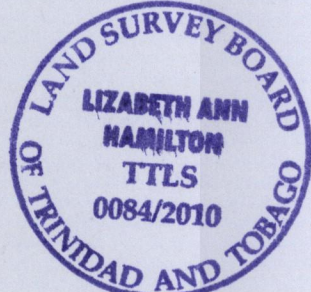
Cadastral Sheet G.10.A&B., 64B/2/a
Ward of Ortoire
County of Victoria

Process ID# 69465

VIDE Bk.1101 fol.55
Bk.1101 fol.56
Bk.1126 fol.196
Bk.325 fol.113



Cassini
G N



Approved *[Signature]*
Director of Surveys 2011.2.3

Co-ordinates are U.T.M. Zone 20 Naparima Datum +/-5m obtained from handheld G.P.S.

SCALE 1:2500

Distances are in metres

o denotes Ir. put unless otherwise stated

Bearings are Cassini Grid based on Solar Observations

PLAN of a Parcel of land coloured pink in the Ward of Ortoire

Containing six point two seven seven zero hectares

Surveyed by me, with due authority, on November 27th 2009 and December 3rd 2009 for Vernal Saunders & Vernon Saunders

In accordance with Regulation 25(1) of the Land Surveyors Regulations 1998,

I certify that this plan is correct.

Checked by *[Signature]* 12/1/11

Entered *[Signature]*

Elizabeth Ann Hamilton
Trinidad & Tobago Land Surveyor November 23 2010

Line	Bearing	Distance
ab	119° 01'	14.75
bc	133° 44'	26.91
cd	141° 38'	19.57
de	153° 00'	15.23
ef	168° 10'	18.65
fg	173° 43'	26.51
gh	172° 27'	21.91
hi	169° 09'	41.77

Line	Bearing	Distance
i-A1	89° 52'	5.08
D1-a	359° 57'	5.75
A2-A3	89° 52'	11.41
A3-B1	28° 05'	35.29