

Process ID# 69462

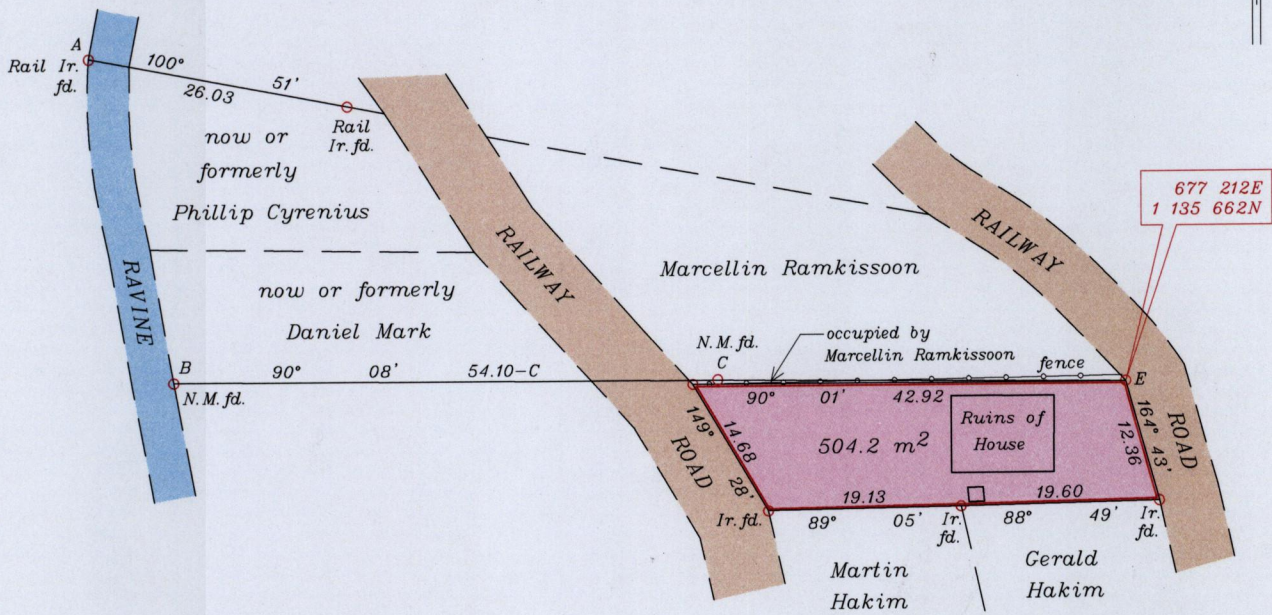
To be brought under the provisions of the Real Property Ordinance

Cadastral Sheet G.4.J., 54D 4/a
Ward of Savana Grande
County of Victoria

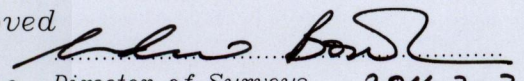
VIDE : Bk.1102 fol.69



Cassini
G | N



Line	Bearing	Distance
AB	165° 38'	33.37
CE	90° 34'	40.40

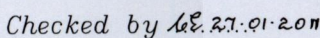
Approved 
Director of Surveys 2011.2.2

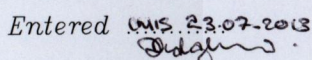
SCALE 1:750
Distances are in metres

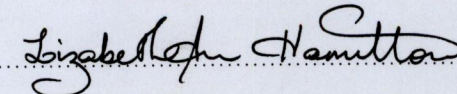
Co-ordinates are U.T.M. Zone 20 Naparima Datum +/-3m obtained from handheld G.P.S.

o denotes Ir. put unless otherwise stated

Bearings are Cassini Grid based on Solar Observations
PLAN of a Parcel of land coloured pink in the Ward of Savana Grande
Containing five hundred and four point two square metres
Surveyed by me, with due authority, on January 22nd 2010 for Beulah Gordon
In accordance with Regulation 25(1) of the Land Surveyors' Regulations 1998,
I certify that this plan is correct.

Checked by  21.01.2011

Entered  23.07.2013


Trinidad & Tobago Land Surveyor June 01 2010