

1369/30

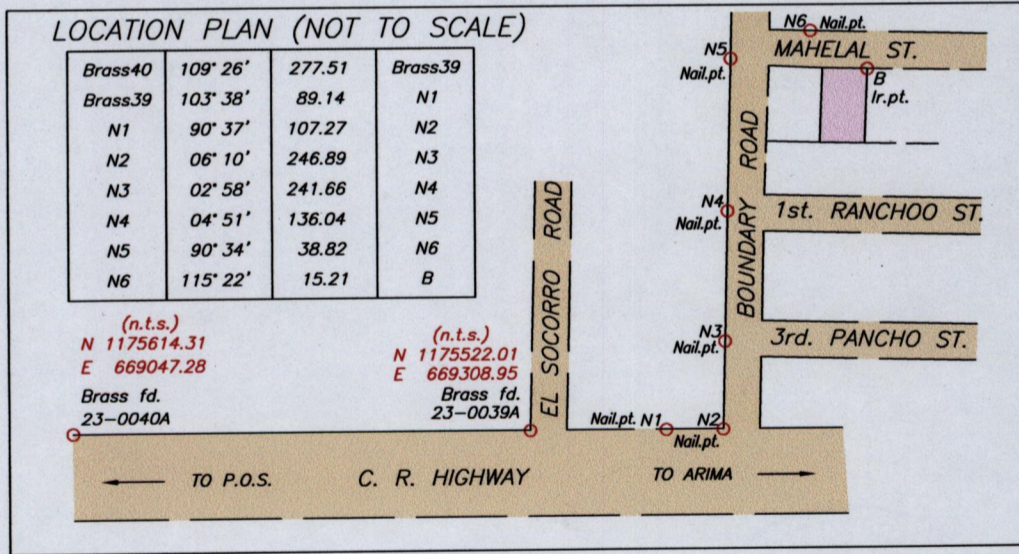
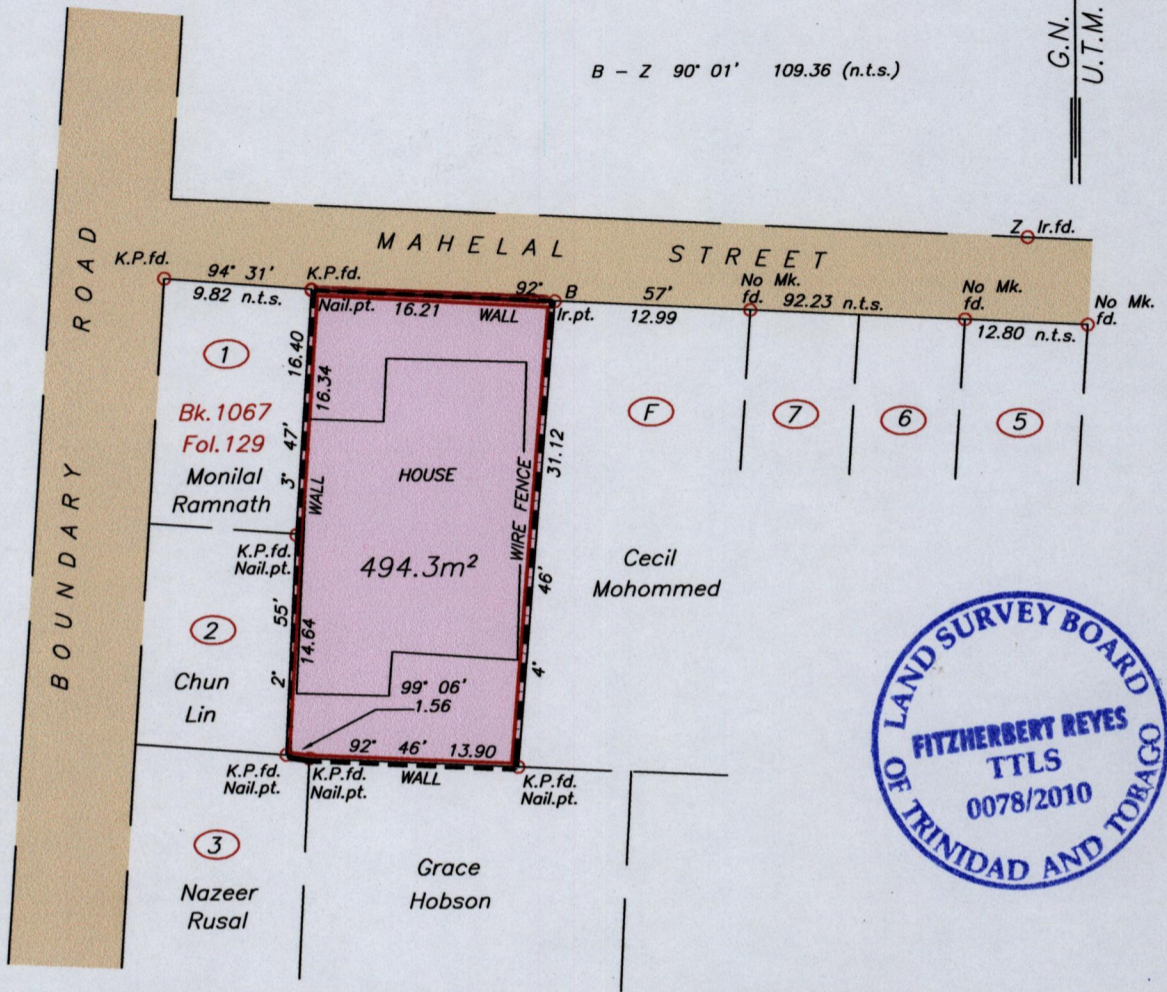
1369

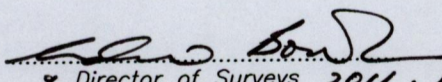
388

Process # 69389

Cadastral Sheet <sup>23C</sup> 1/c (B.17.N.)  
Ward of St. Anns  
County of St. George

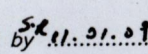
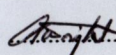
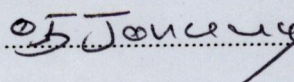
To be brought under the provisions of  
the Real Property Ordinance



Approved   
Director of Surveys 2011.1.12

SCALE 1:500  
Distances are in METRES

Bearings are U.T.M. Grid based on L&S controls  
PLAN of a parcel of land coloured pink in the Ward of St. Anns  
Containing four hundred and ninety four point three square metres  
Surveyed by me, with due authority, on June 18, 2005, for Mohan Moolchan  
In accordance with Regulation 25 (1) of the Land Surveyors' Regulations 1998,  
I certify that this plan is correct

Checked by  ..... T.T.L.S.  
Entered on  .....  
Trinidad & Tobago Land Surveyor  20.10