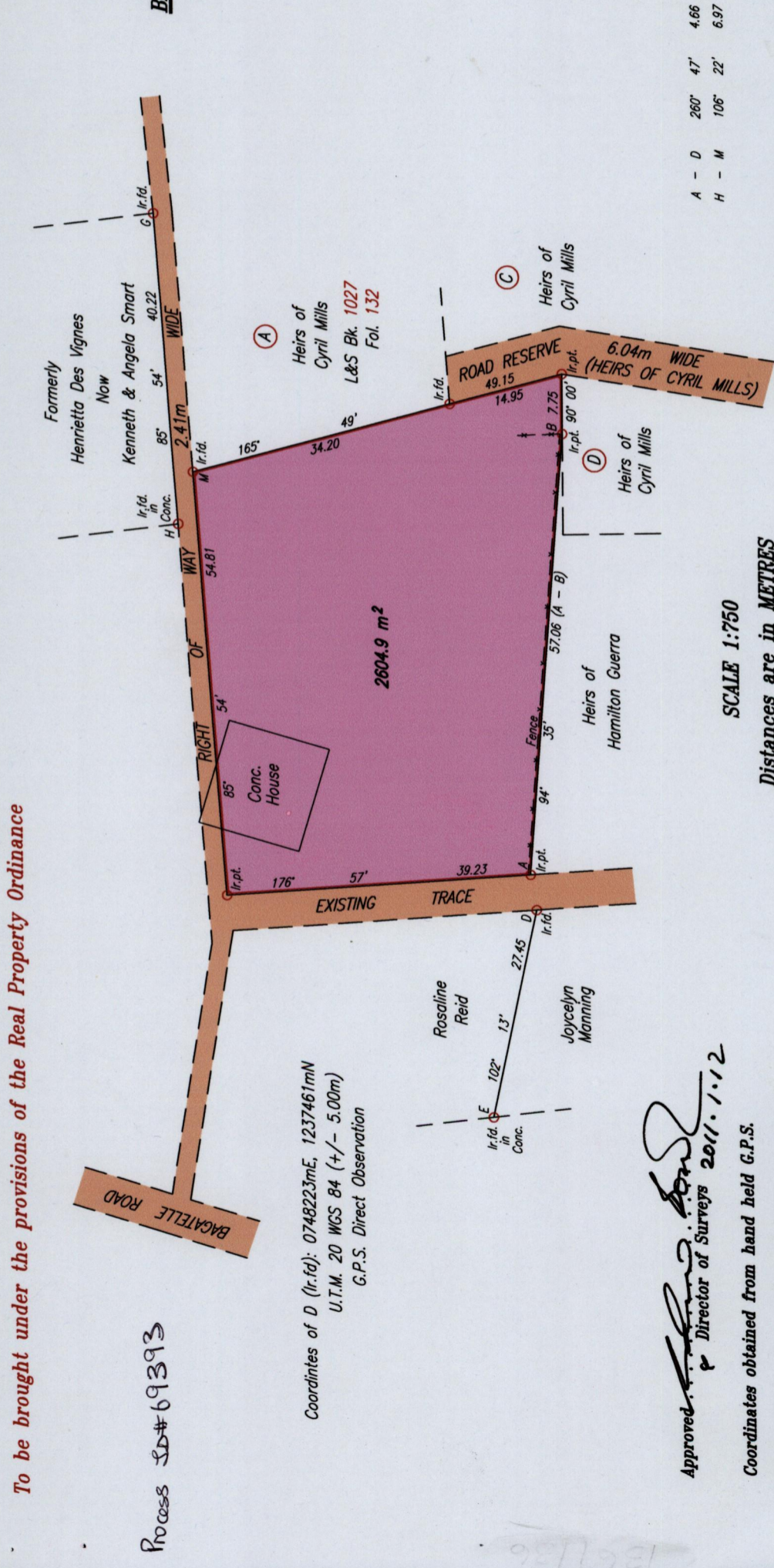


1369

36

BAGATELLE



A - D	260° 47'	4.66
H - M	106° 22'	6.97



To be brought under the provisions of the Real Property Ordinance

Process SD# 69393

Coordinates of D (Ir.f.d): 0748223mE, 1237461mN
 U.T.M. 20 WGS 84 (+/- 5.00m)
 G.P.S. Direct Observation

Approved: *[Signature]*
 Director of Surveys 2011.1.12

Coordinates obtained from hand held G.P.S.

Denotes Iron put except where otherwise stated

Bearings are Cassini Grid based on Solar Observations

PLAN of Parcel of land coloured pink in the Ward of Tobago

Containing two thousand six hundred and four point nine square metres

Surveyed by me, with due authority, on the 2nd October 2008 for John Hollinsworth Gay

In accordance with Regulation 25 (1) of The Land Surveyors Regulations 1998,

I certify that this plan is correct.

Checked by *[Signature]*

Entered on *[Signature]*
 2.7.2013

SCALE 1:750
 Distances are in METRES

[Signature]
 Peter Goodridge
 TTLS

Trinidad & Tobago Land Surveyor
 C:\LESS 2008\TOBAGO\GAY, JOHN HOLLINSWORTH.dwg
 FILE NO: TGO051
 2010