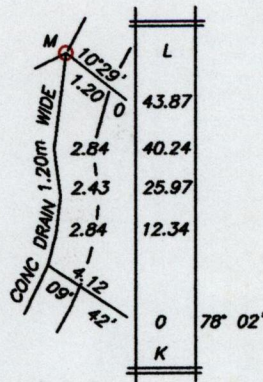


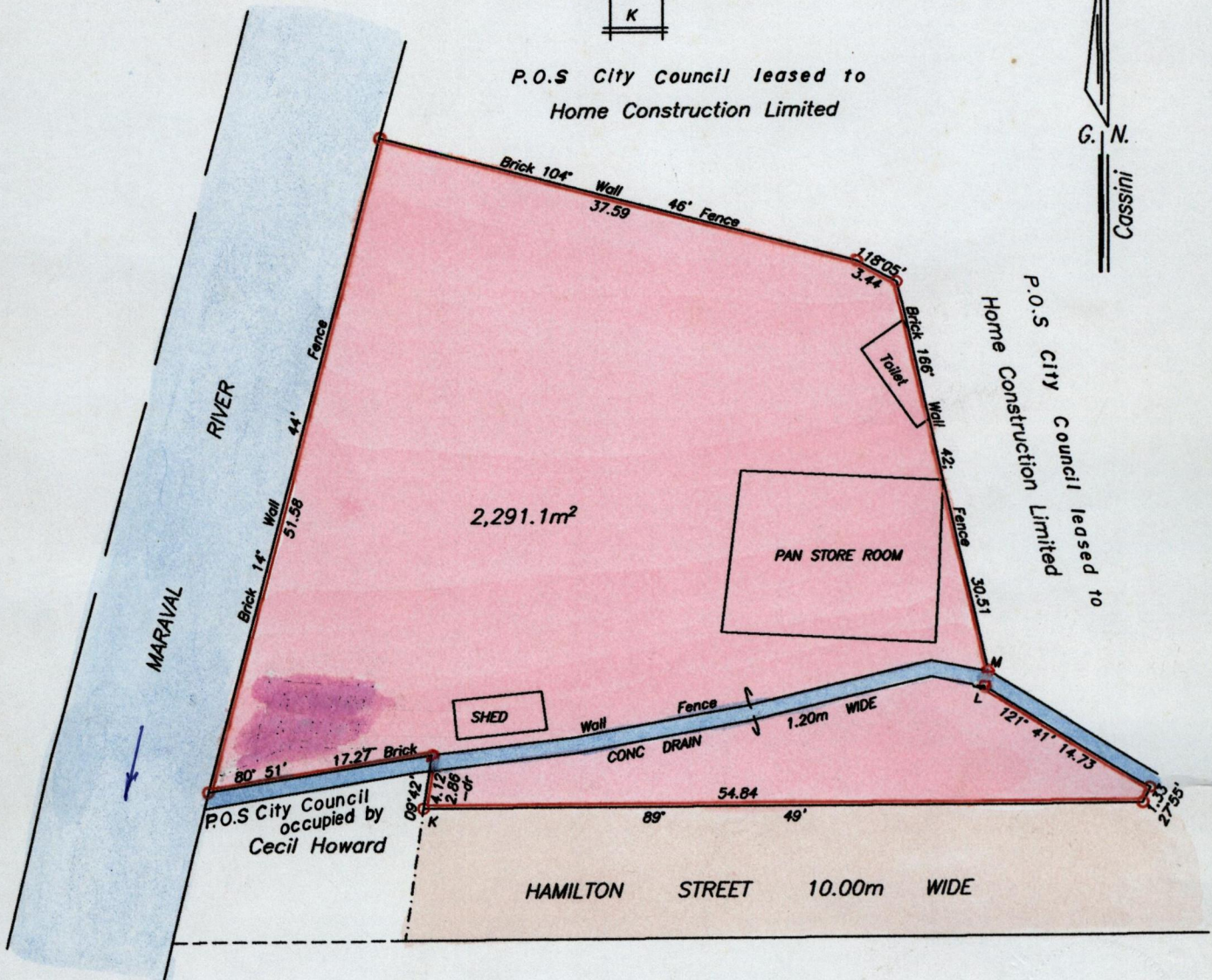
U.P.R.N No.....

To be brought under the provisions of the Real Property Ordinance

Cadastral Sheet (A.20 E.) 13D/4/c  
City of Port of Spain  
County of St. George



P.O.S City Council leased to Home Construction Limited



K-L 78° 02' 43.87  
L-M 10° 29' 1.20

SEE JE 184  
JE 233

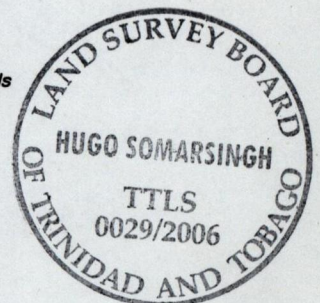
SCALE 1/500

Distances are in metres

K - Brass 13-073 85° 07' 409.02  
Brass No. 13-073 N 1,179,362.06  
E 661,039.43  
Co-ordinates are based on L&S. controls

Approved by: *[Signature]*  
Director of Surveys 2011.1.11

Denotes Iron put unless otherwise stated  
Bearings are Cassini Grid based on Solar Observations  
Note to obtain compass bearings add 16 minutes



Plan of a Parcel of land coloured pink in the City of Port of Spain  
Containing two thousand two hundred and ninety one point one square metres  
Surveyed by me, with due authority on the 29th November 2005 for Phase II Pan Grove Limited.  
In accordance with Regulation 25 (1) of the Land Surveyors' Regulations 1998,  
I certify that this plan is correct.

Checked by: *[Signature]*

*[Signature]*

Entered on *[Stamp]* 2.3.2013 Trinidad and Tobago Land Surveyor *[Signature]* 7th February 2006