

1369

COT 32
APP 32

Process LD#69418

R.P.O. Vol. 28 Fol. 667

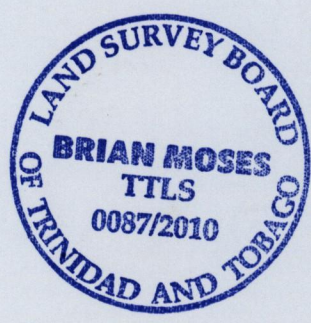
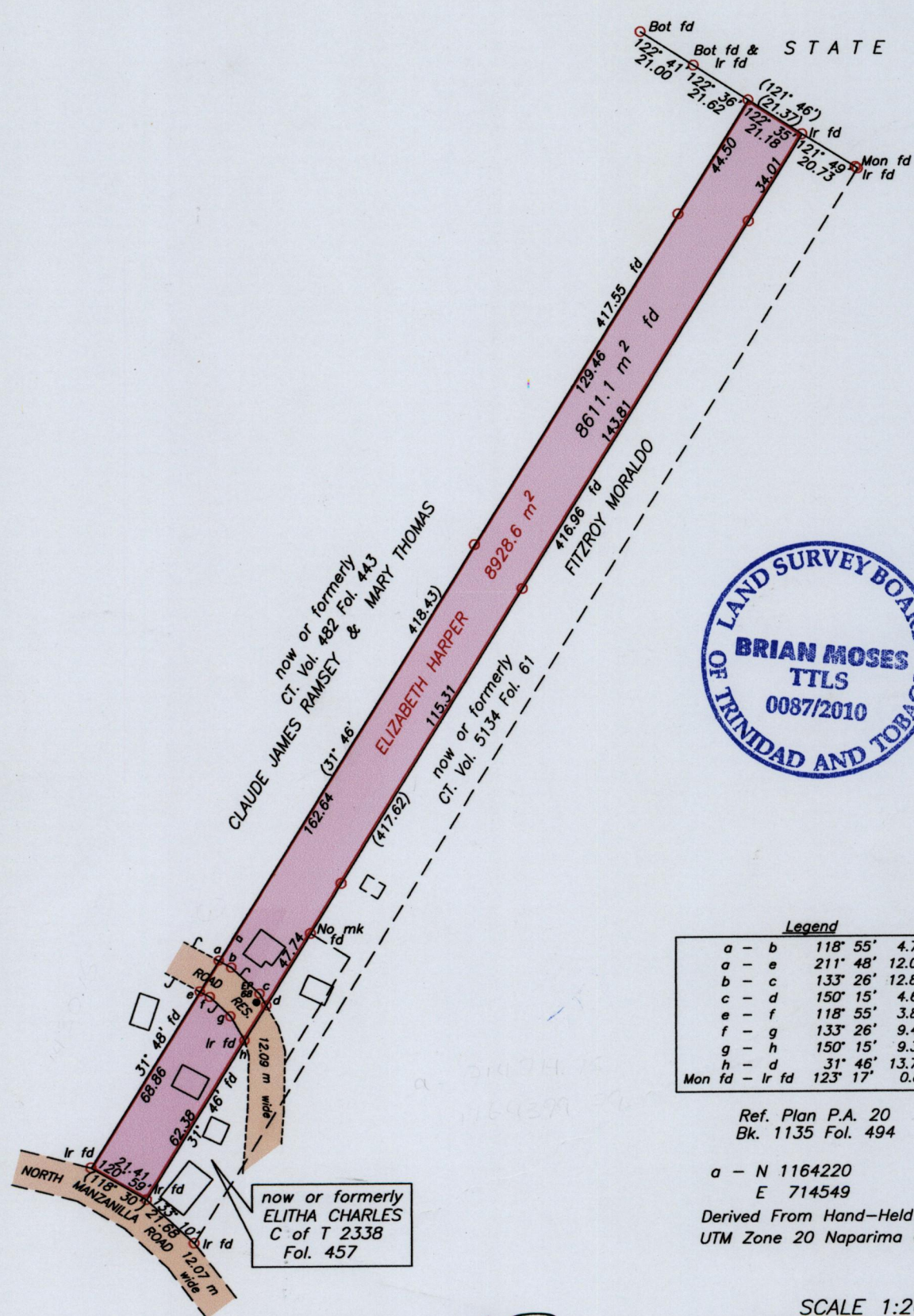
C.T. Vol. Fol.

Cadastral Sheet E.8.C. 36B
1/c

Ward of Manzanilla

County of St. Andrew

Vesting Order

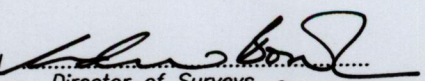


Ref. Plan P.A. 20
Bk. 1135 Fol. 494

a - N 1164220
E 714549

Derived From Hand-Held GPS (+/-5 m)
UTM Zone 20 Naparima Co-ordinates

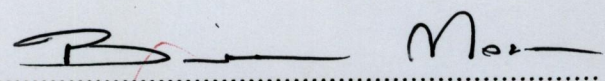
SCALE 1:2000
Distances are in METRES

Approved 
Director of Surveys 2010.12.20

- Denotes Iron put unless otherwise stated
- Bearings are Cassini Grid based on Solar observations

PLAN of a Parcel of land coloured pink in the Ward of Manzanilla
Containing eight six one one point one square metres
Surveyed by me, with due authority, on 13th May & 5th June, 2010 to be vested to Anges Rubina Grenaway
In accordance with Regulation 25 (1) of the Land Surveyors' Regulations 1998,
I certify that this Plan is correct.

Checked by MM 13/12/10


Trinidad & Tobago Land Surveyor (T.T.L.S.)
25th Nov. 2010

Entered on CMIS 25.07.2013