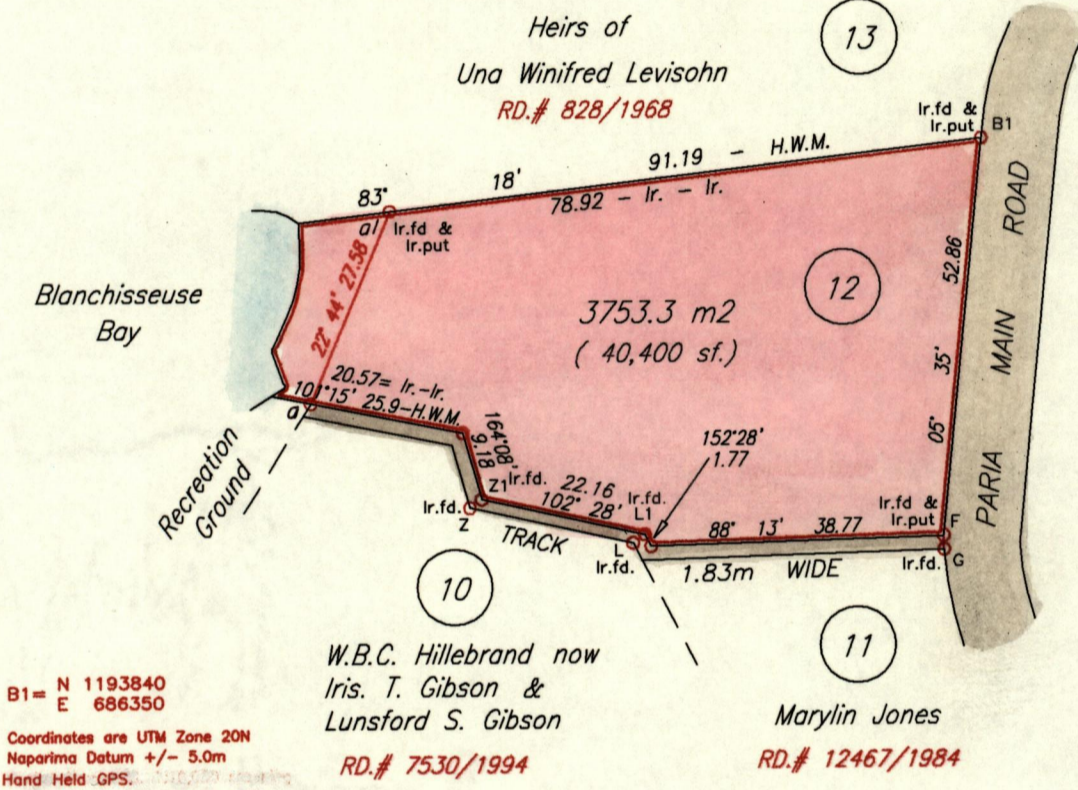
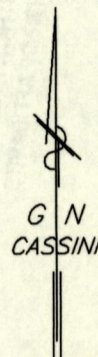
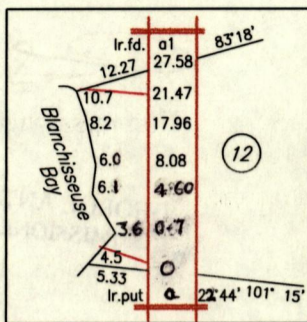


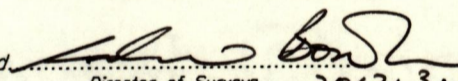
To be brought under the provisions of the Real Property Ordinance.

Cadastral Sheet $\frac{4F}{1/a}$ (B.9.C.)
Ward of Blanchisseuse
County of St. George

REFERENCE			
From	To	Bearing	Distance
Z	Z1	54° 27'	1.93
L	L1	54° 27'	1.93
Z	L	102° 28'	22.16
F	G	179° 14'	1.76



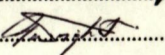
B1 = N 1193840
E 686350
Coordinates are UTM Zone 20N
Naparima Datum +/- 5.0m
Hand Held GPS

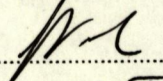
Approved: 
Director of Surveys 2012.3.26

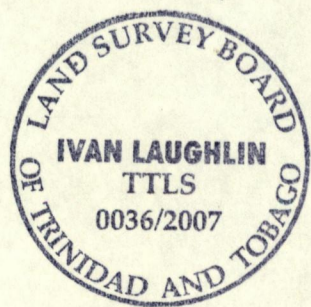
Ref. RD.# 3465/1967
Plan C.K.36
Bk. 1021 fol. 192

o Denotes Iron put, except otherwise stated.
Note : To obtain compass bearings add 13 minutes
PLAN of a Parcel of land coloured pink in the Ward of Blanchisseuse
Containing three thousand, seven hundred and fifty three point three square metres.
Surveyed by me, with due authority, in June 2002, May 2004 and June 2007 for
Leonard and Murray Bernstein.
In accordance with Regulation 25 (1) of the Land Surveyors' Regulations 1998, I certify that this plan is correct.

SCALE 1 : 1000
Distances are in metres

Checked: HR-22/03/12
Entered: 

 TTLS.
Trinidad & Tobago Land Surveyor..... 16 July 2007.



"A"

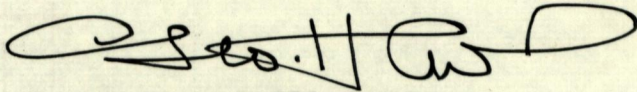
This is the Survey Plan referred to as marked 'A' in the
prefixed Declaration of Ivan Laughlin
declared to before me this ~~3rd~~ day of April 2008

W

16th Feb 2012

Before me

GEORGE ANTHONY HARRISON
COMMISSIONER OF AFFIDAVITS



Commissioner of Affidavits

GEORGE ANTHONY HARRISON
COMMISSIONER OF AFFIDAVITS

