

1369/12

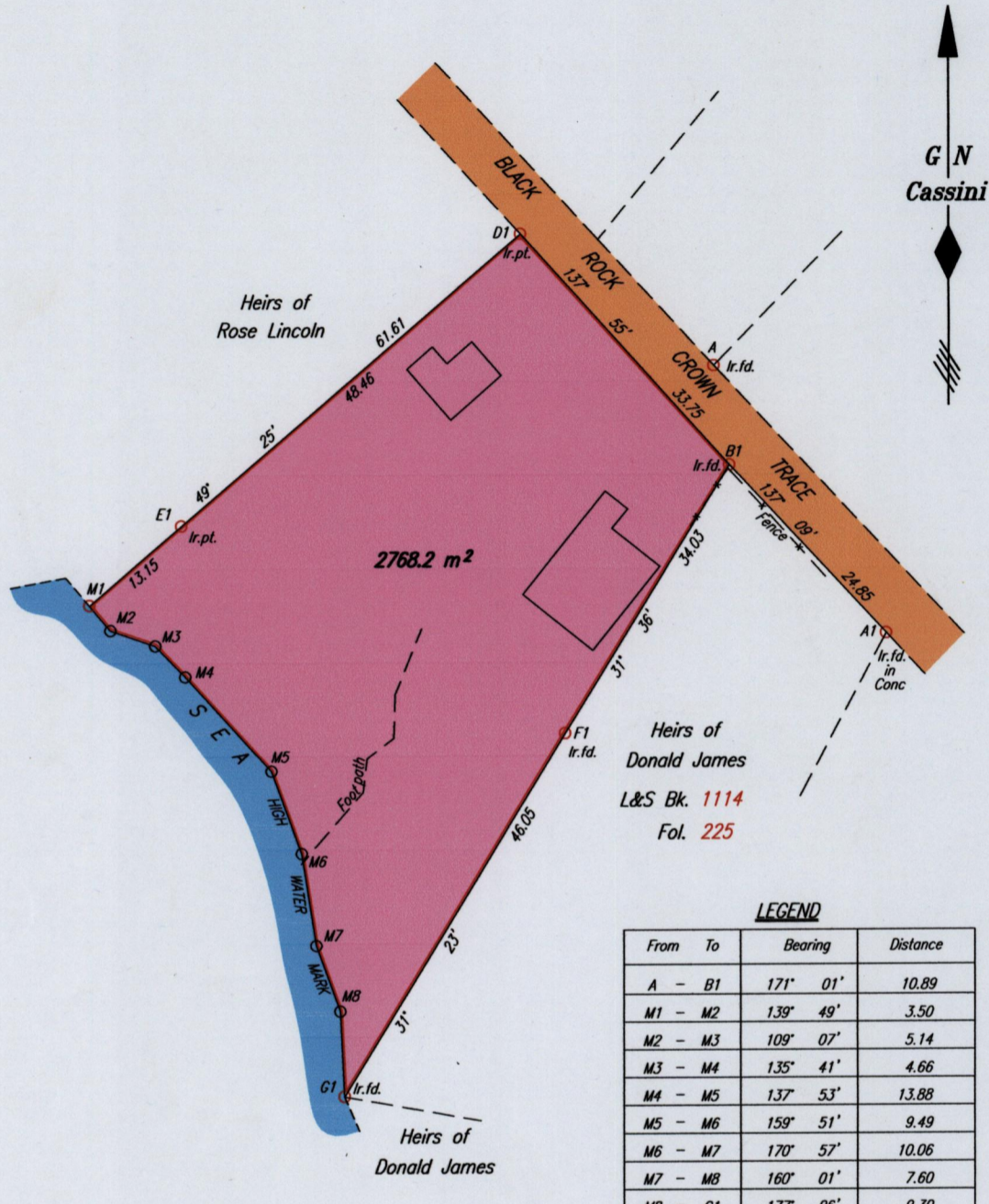
192

Process ID # 40773

1369

To be brought under the provisions of the Real Property Ordinance

BLACK ROCK

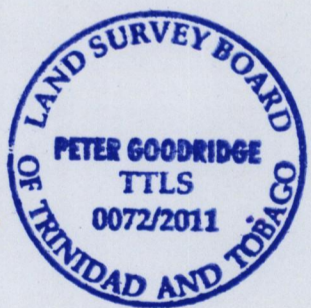


LEGEND

From	To	Bearing	Distance
A	B1	171° 01'	10.89
M1	M2	139° 49'	3.50
M2	M3	109° 07'	5.14
M3	M4	135° 41'	4.66
M4	M5	137° 53'	13.88
M5	M6	159° 51'	9.49
M6	M7	170° 57'	10.06
M7	M8	160° 01'	7.60
M8	G1	177° 06'	9.30

Coordinates of B1 (Ir.fd.): 0742007mE, 1239697mN
U.T.M. 20 WGS84 (+/- 5.00m)
G.P.S. Direct Observation using handheld receiver

Approved *[Signature]*
Director of Surveys
2012.2.9



- Denotes Peg put
 - Denotes Iron put except where otherwise stated
- Bearings are Cassini Grid based on Solar Observations

SCALE 1:750

Distances are in METRES

PLAN of a Parcel of land coloured pink in the Ward of Tobago
Containing two thousand seven hundred and sixty eight point ^{two} square metres
Surveyed by me, with due authority, on the 30th March 2011 for Etrice Winchester
In accordance with Regulation 25 (1) of The Land Surveyors' Regulations 1998,
I certify that this plan is correct.

Checked by *[Signature]*

[Signature] TTLS

Entered on C.M.S. 25.06.2012