

1369

177

TO BE BROUGHT UNDER THE PROVISIONS OF THE REAL PROPERTY ORDINANCE

Cadastral Sheet 23B/2/d, B.22.B.

R.D. No. 5539 of 1968

Ward of St. Anns

U.P.I.N. No.

County of St. George

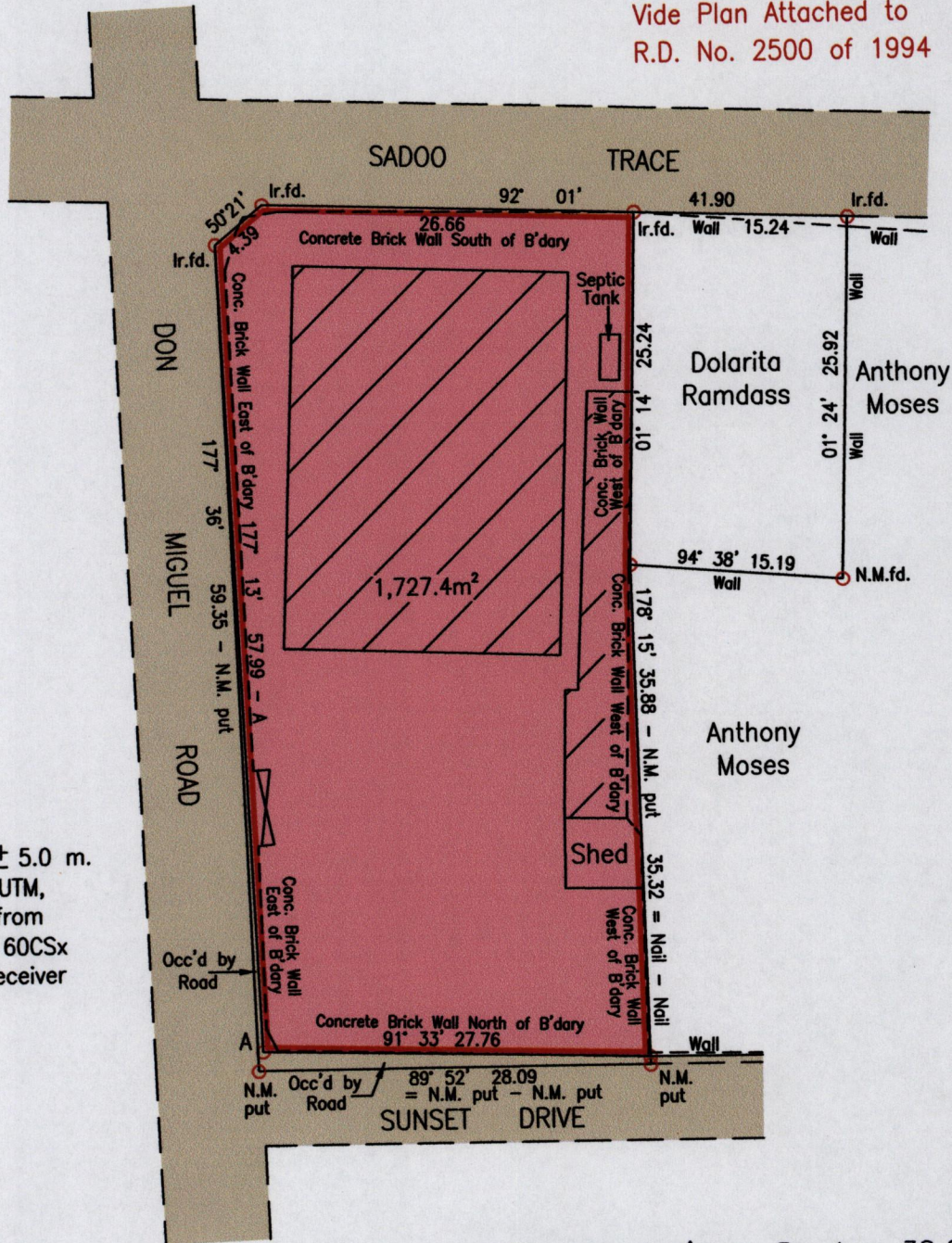
Process ID # 44835

Corner Don Miguel Road and Sadoo Trace El Socorro

Vide
Bk 1011:190
Bk 1220:224

Vide Plan Attached to R.D. No. 2500 of 1994

Grid North Cassini



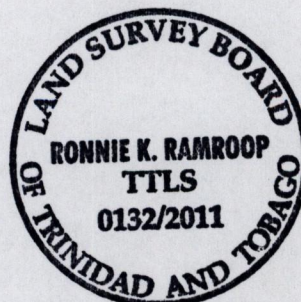
E 668560
A N 1175613

Reliability Error ± 5.0 m. Coordinates are UTM, Naparima 1955 from Garmin GPSmap 60CSx Handheld GPS Receiver

NOTE: Area Occ'd by Road = 38.6m²

Approved

Signature of Director of Surveys, dated 2012.1.12



SCALE 1:500 Distances are in Metres

Bearings are Cassini Grid based on Solar Obs.

○ Denotes Nail Put unless otherwise stated

Plan of a Parcel of land coloured pink in the Ward of St. Anns

Containing one thousand seven hundred and twenty seven point four square metres

Surveyed by me, with due authority, on 17th October 2011 for Jesse Henry Anup Mahabir

In accordance with Regulation 25(1) of the Land Surveyors Regulations 1998,

I certify that this plan is correct.

Checked by [Signature] 10/1/12

Signature of Land Surveyor

Entered on [Signature] 21-06-2012

Trinidad & Tobago Land Surveyor 20th October 2011