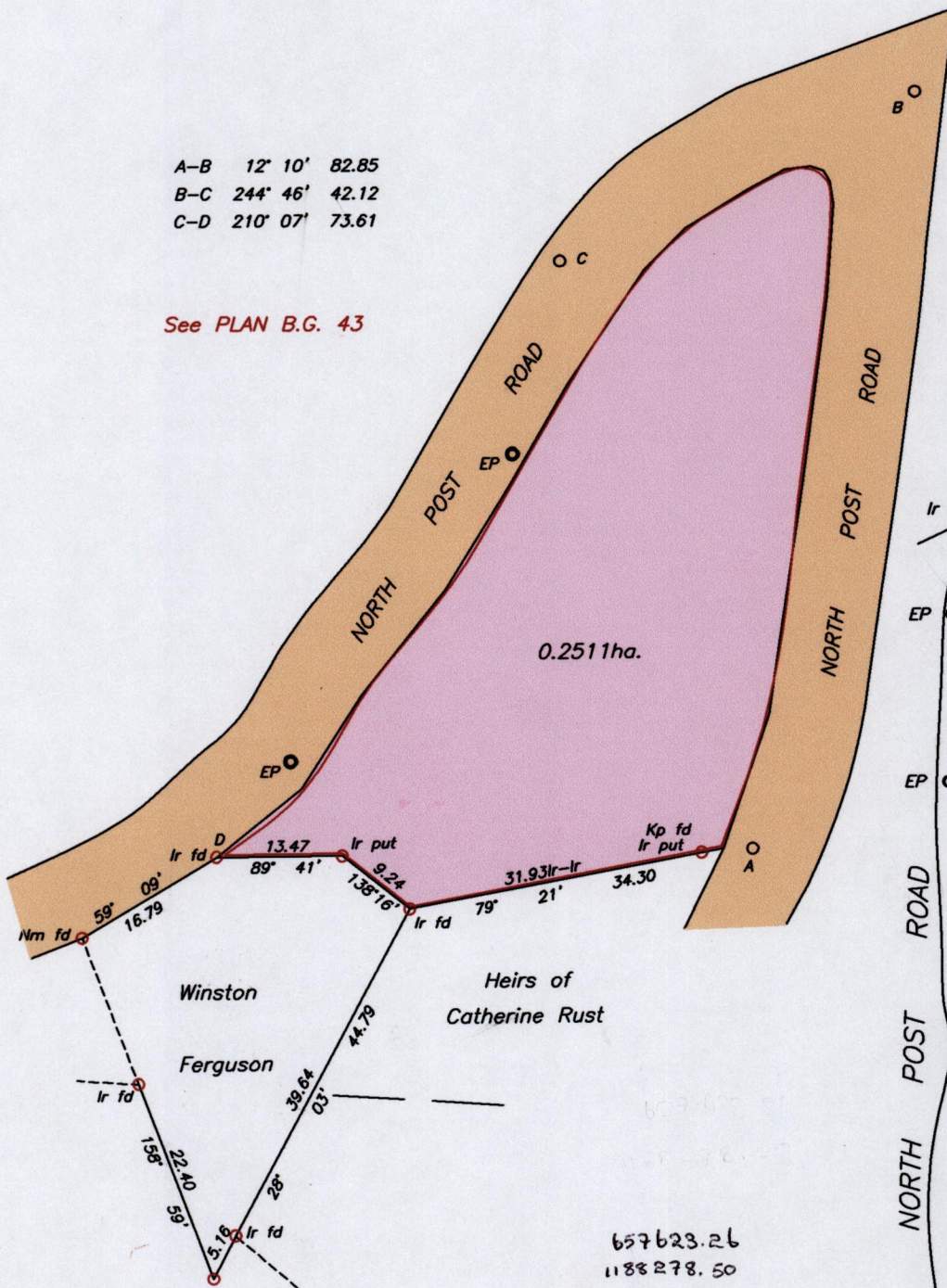


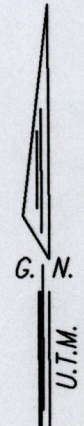
To be brought under the provisions of the Real Property Ordinance

A-B 12' 10' 82.85
B-C 244' 46' 42.12
C-D 210' 07' 73.61

See PLAN B.G. 43



Ir fd	D	73.61
		4.25
EP		60.81
		4.76
		50.81
		6.92
		36.60
		7.30
		23.59
EP		20.46
		5.94
		7.34
		11.14
	O	
	C	210' 07'
	C	42.12
		4.69
		34.26
		2.63
		28.36
		1.77
		20.74
		1.60
		16.14
		2.46
		13.57
	O	
	B	244' 46'
	B	82.85
		7.81
		72.55
		6.02
		69.30
		4.59
		59.54
		2.93
		38.81
		1.34
		14.45
	O	
	A	12' 10'
		2.36
		3.15
		259' 21'
		270' 53'



Approved by *[Signature]*
Director of Surveys 2012.1.11

SCALE 1/750
Distances are in metres

Co-ordinate are based on GPS finding
WGS 84 U.T.M. Zone 20 +/- 3.00m

○ Denotes Iron put unless otherwise stated
Bearings are U.T.M. Grid based on Solar Observations

Plan of a Parcel of land coloured pink in the Ward of Diego Martin
Containing zero point two five one one hectare

Surveyed by me, with due authority on 01st August 2005 for Frank Toyer
In accordance with Regulation 25 (1) of the Land Surveyors' Regulations 1998,

I certify that this plan is correct.

Checked by *[Signature]* *[Signature]*

Entered on *[Signature]* 22nd February 2010
Trinidad and Tobago Land Surveyor

