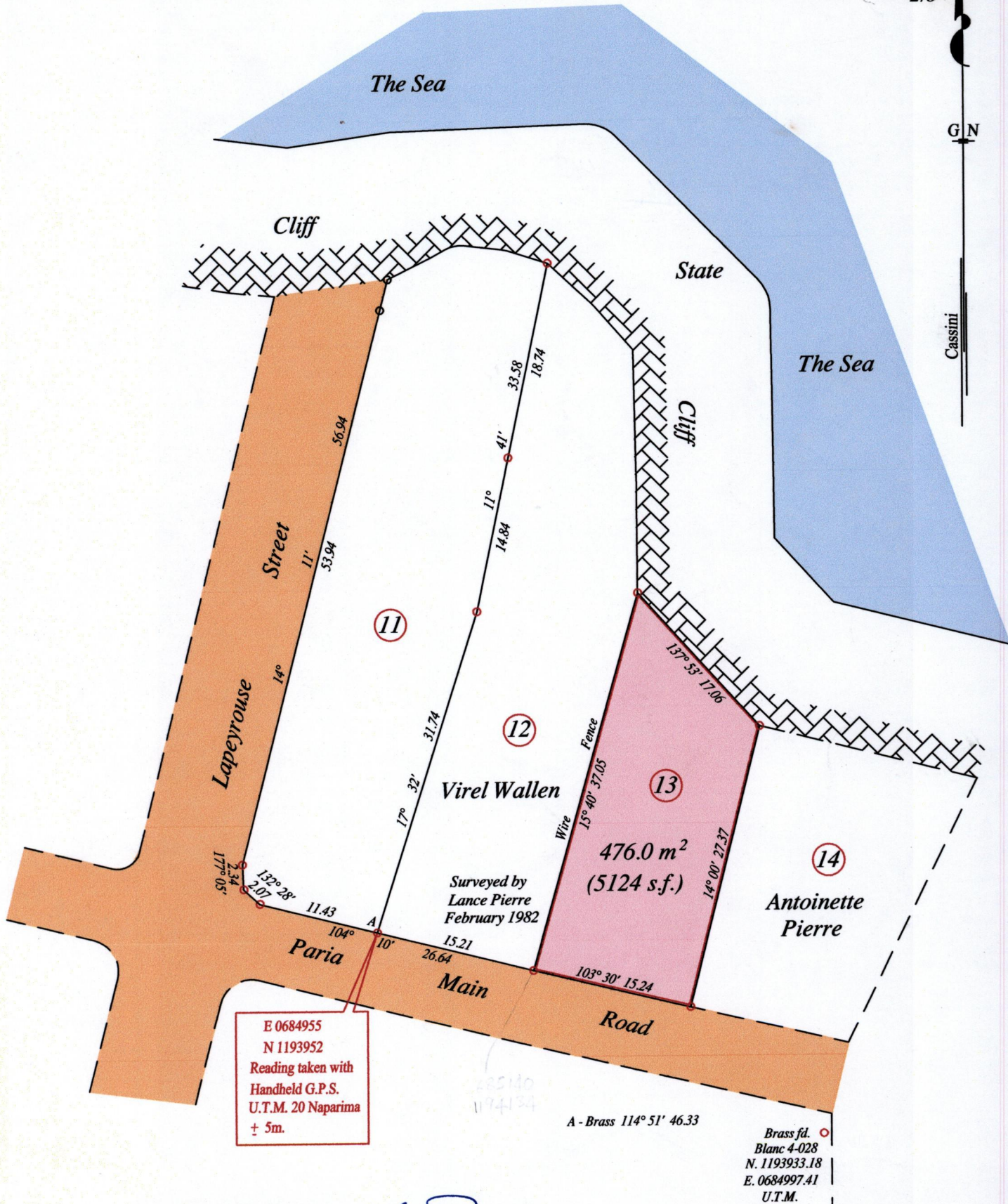


Process SD# 69561

171



E 0684955  
 N 1193952  
 Reading taken with  
 Handheld G.P.S.  
 U.T.M. 20 Naparima  
 ± 5m.

A - Brass 114° 51' 46.33

Brass fid. ○  
 Blanc 4-028  
 N. 1193933.18  
 E. 0684997.41  
 U.T.M.

Approved *[Signature]*  
 Director of Surveys 2011.12.23

Vide Plan C N 8  
 Vide Bk. 1241 fol. 55  
 Vide Bk. 1248 fol. 61

SCALE : 1:500

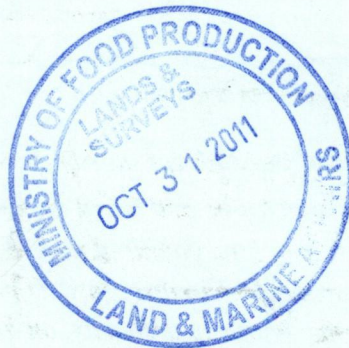
○ Denotes Iron found except stated otherwise.  
 Note: Bearings are cassini grid based on solar observations Distances are in metres  
 PLAN of a Parcel of land coloured pink in the Ward of Blanchisseuse  
 Containing four hundred and seventy six point zero square metres  
 Re-defined by me, with due authority, on 4th April 2009 for Ms. Rita Wilkinson  
 In accordance with Regulation 25 (1) of the Land Surveyors' Regulations 1998  
 I certify that this plan is correct.



Checked by IR-02/11/11 *[Signature]*

Entered on Belmonte Trinidad & Tobago Land Surveyor 14<sup>th</sup> October 2011

THIS IS THE 'A'  
PLAN  
MARKED 'A' REFERRED TO BY  
WINSTON RAMCHARAN  
IN THE Declaration ATTACHED  
DECLARED THIS 14<sup>th</sup> DAY OF  
December, 2011 BEFORE ME,  
[Signature]  
LATIFF R. WESTMAAS  
COMMISSIONER OF AFFIDAVITS



1369/171