

To be brought under the provisions
of the Real Property Ordinance

1369

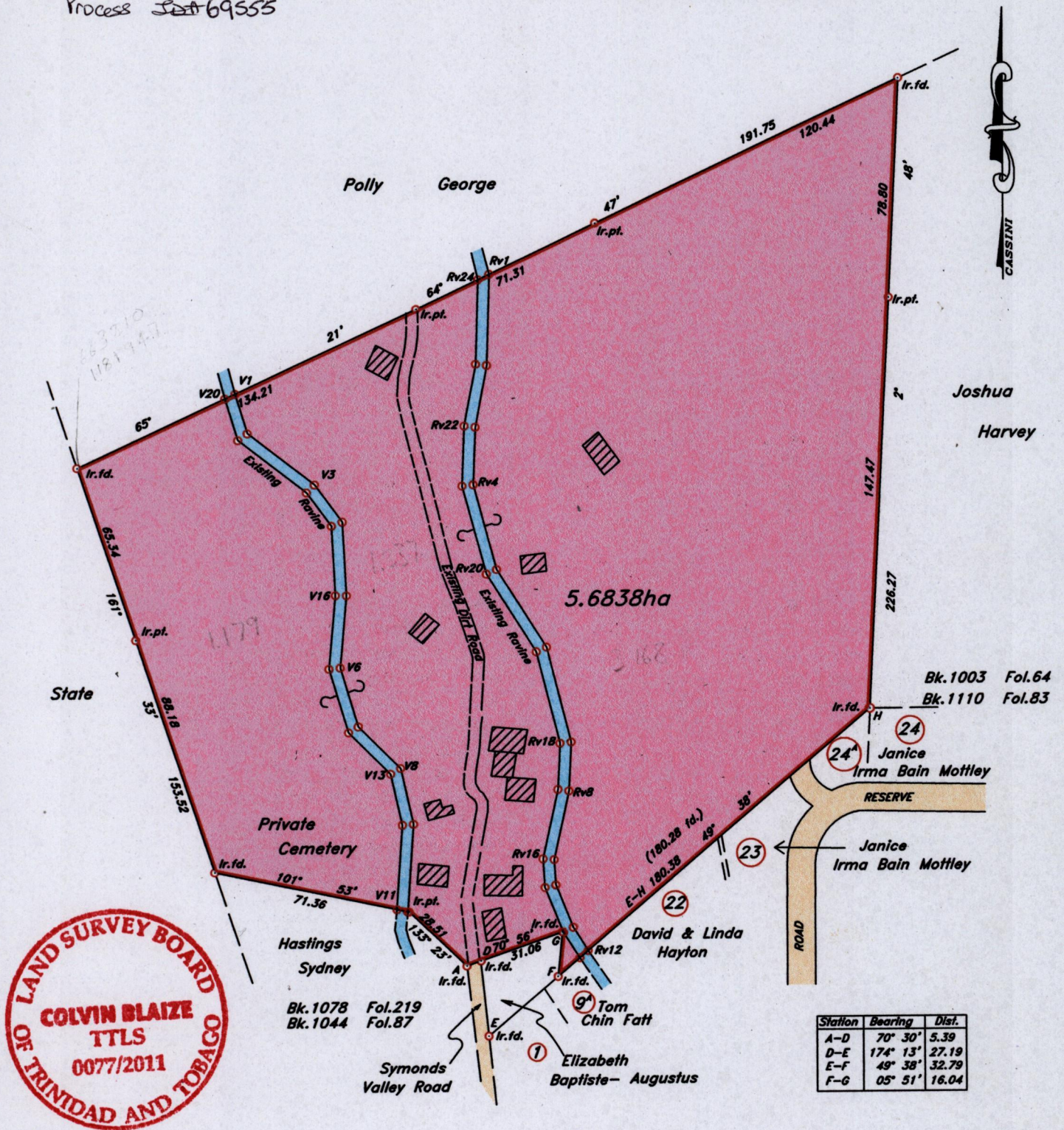
Cadastral Sheet $\frac{13E \text{ \& } 13D\&23A}{1/c \quad 2/d}$ (A.20.C.)

Ward of St. Anns

County of St. George

165

Process ~~12~~ 69555



Approved _____
Director of Surveys

Station E : (0663370m E, 1181690m N)
U.T.M (NAPARIMA) Coordinate
zone. 20 (Accuracy \pm 3.0m)

○ Denotes point at which boundary changes direction
Bearings are Cassini Grid, based on Solar Observations.

SCALE 1 : 2000
Distances are in metres.

PLAN of a parcel of land coloured pink in the Ward of St. Anns
Containing Five Point Six Eight Three Eight Hectares.

Surveyed by me, with due authority on 27th May and 4th June 2003 for Elizabeth Baptiste Augustus
In accordance with Regulation 25 (1) of the Land Surveyors' Regulations 1998, I certify
that this plan is correct.

Checked by *l.e.* 25.11.2011

Entered on *Palmer*

Colvin Blaize
Trinidad and Tobago Land Surveyor 01 October 2011.

STA	DIST	Bearing	STA
V1	14.8	162° 58'	V2
V2	30.28	127° 37'	V3
V3	16.70	143° 35'	V4
V4	26.57	176° 59'	V5
V5	25.94	185° 13'	V6
V6	22.07	163° 13'	V7
V7	21.47	134° 58'	V8
V8	20.66	167° 19'	V9
V9	31.51	184° 00'	V10
V10	4.04	282° 31'	V11
V11	30.32	04° 00'	V12
V12	18.91	347° 19'	V13
V13	21.32	314° 58'	V14
V14	23.85	343° 13'	V15
V15	26.43	05° 13'	V16
V16	25.09	356° 59'	V17
V17	14.94	323° 35'	V18
V18	30.99	307° 37'	V19
V19	15.54	342° 58'	V20
V20	4.04	65° 21'	V1

STA	DIST	Bearing	STA
Rv1	32.88	181° 50'	Rv2
Rv2	22.49	190° 54'	Rv3
Rv3	20.55	182° 18'	Rv4
Rv4	31.62	164° 52'	Rv5
Rv5	33.23	147° 30'	Rv6
Rv6	35.11	165° 36'	Rv7
Rv7	17.71	182° 52'	Rv8
Rv8	25.28	192° 28'	Rv9
Rv9	9.05	176° 25'	Rv10
Rv10	16.49	157° 55'	Rv11
Rv11	9.90	147° 30'	Rv12
Rv12	4.03	229° 32'	Rv13
Rv13	10.82	327° 27'	Rv14
Rv14	17.51	337° 55'	Rv15
Rv15	10.27	356° 25'	Rv16
Rv16	25.50	12° 28'	Rv17
Rv17	16.76	2° 52'	Rv18
Rv18	33.87	345° 36'	Rv19
Rv19	33.21	327° 30'	Rv20
Rv20	32.84	344° 52'	Rv21
Rv21	21.47	2° 18'	Rv22
Rv22	22.47	10° 54'	Rv23
Rv23	30.52	1° 50'	Rv24
Rv24	4.49	64° 47'	Rv1

