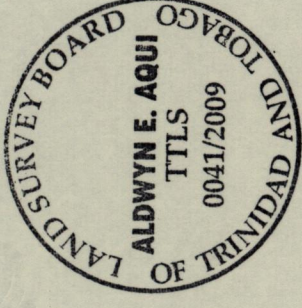
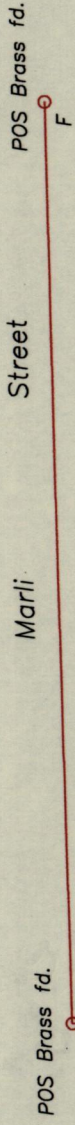


City of Port of Spain  
County of St. George

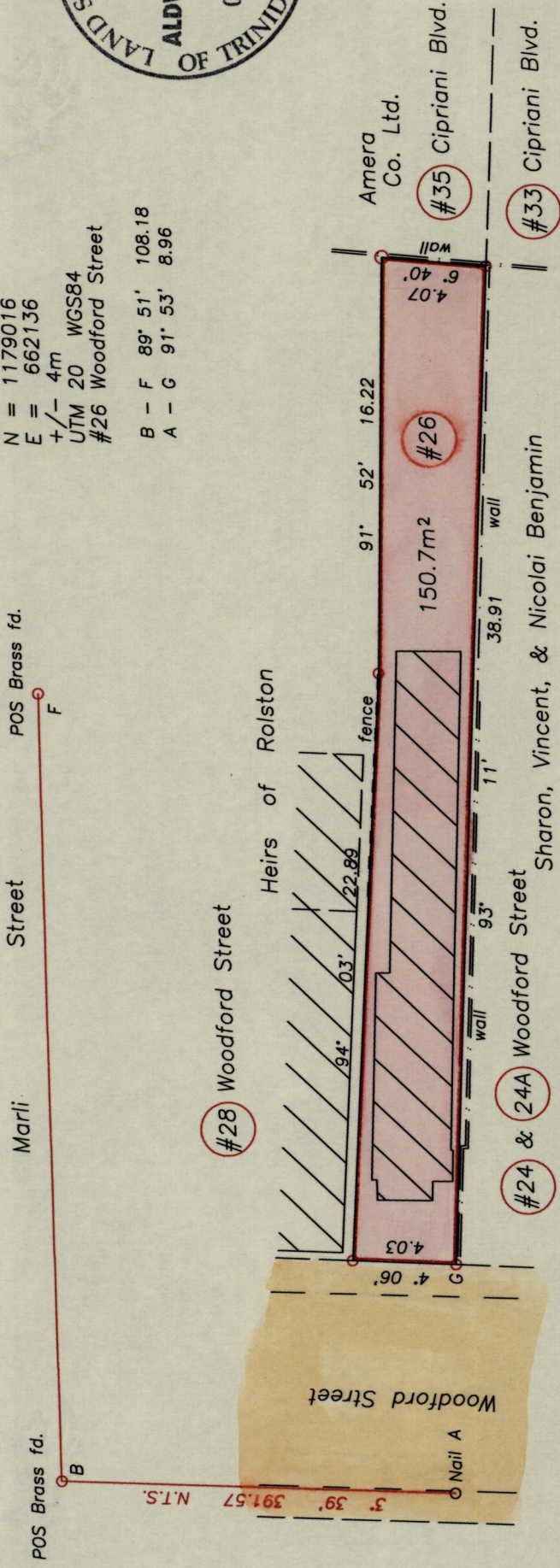
References  
R.D. 4222/1988  
R.D. 1307/1993  
R.D. 2270/1987

Nail A  
N = 1179016  
E = 662136  
+/- 4m  
UTM 20 WGS84  
#26 Woodford Street  
B - F 89° 51' 108.18  
A - G 91° 53' 8.96



To be brought under the provisions of the Real Property Ordinance.

Process ID # 40921



○ Denotes Iron put unless otherwise stated  
Bearings are based on Port of Spain Control Points

PLAN of a parcel of land coloured pink in the City of Port of Spain containing one hundred and fifty point seven square metres, Surveyed by me, with due authority, on March 6th 2009. for Yolanda Allain In accordance with Regulation 25 (1) of the Land Surveyors' Regulations 1998, I certify that this plan is correct.

SCALE 1:250  
Distances are in METRES

Approved

*[Signature]*  
Director of Surveys  
2011.11.21

Checked by *[Signature]*  
Entered on S.M.S. 15/06/2012

*[Signature]* T.T.L.S.  
Trinidad & Tobago Land Surveyor  
19.03.2009