

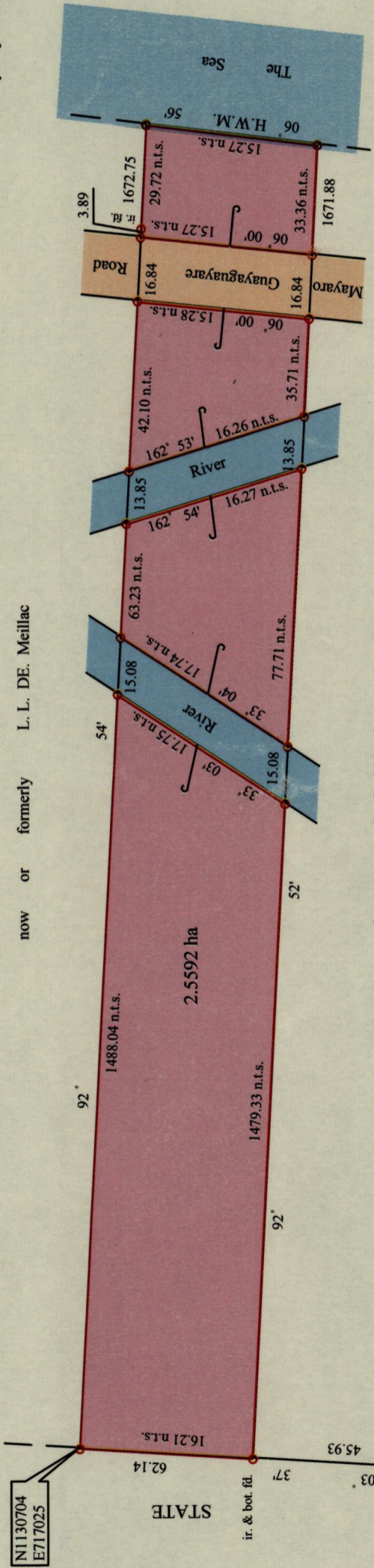
To be brought under the Provisions of the  
Real Property Ordinance

Process ID# 695 20

Cadastral Sheet G. 10. I. 66B  
4/a & b

Ward of Guayaguayare

County of Mayaro



now or formerly L. L. DE. Meillac

now or formerly E. G. Valentine BK. 878 / 23

Approved  
*[Signature]*  
Director of Surveys 2011.11.11

Coordinates taken on hand held Magellan GPS Receiver  $\pm$  5 metres

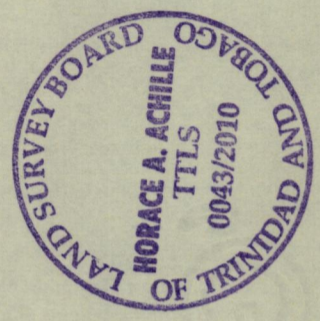
○ Denotes iron put except otherwise stated  
Bearings are Cassini Grid based on Solar Observations  
PLAN of a parcel of land coloured pink in the Ward of Guayaguayare  
Containing two point five five nine two hectares  
Surveyed by me, with due authority, in July 31, 2008 for Beulah George Pompey  
In accordance with Regulation 25 (1) of the Land Surveyors Regulations 1998,  
I certify that this plan is correct.

Checked by *[Signature]* Horace A. Achille

Entered on ..... Trinidad & Tobago Land Surveyor 11<sup>th</sup> May 2010 .....

SCALE 1 : 1500

Distances are in metres



1369/151

151