

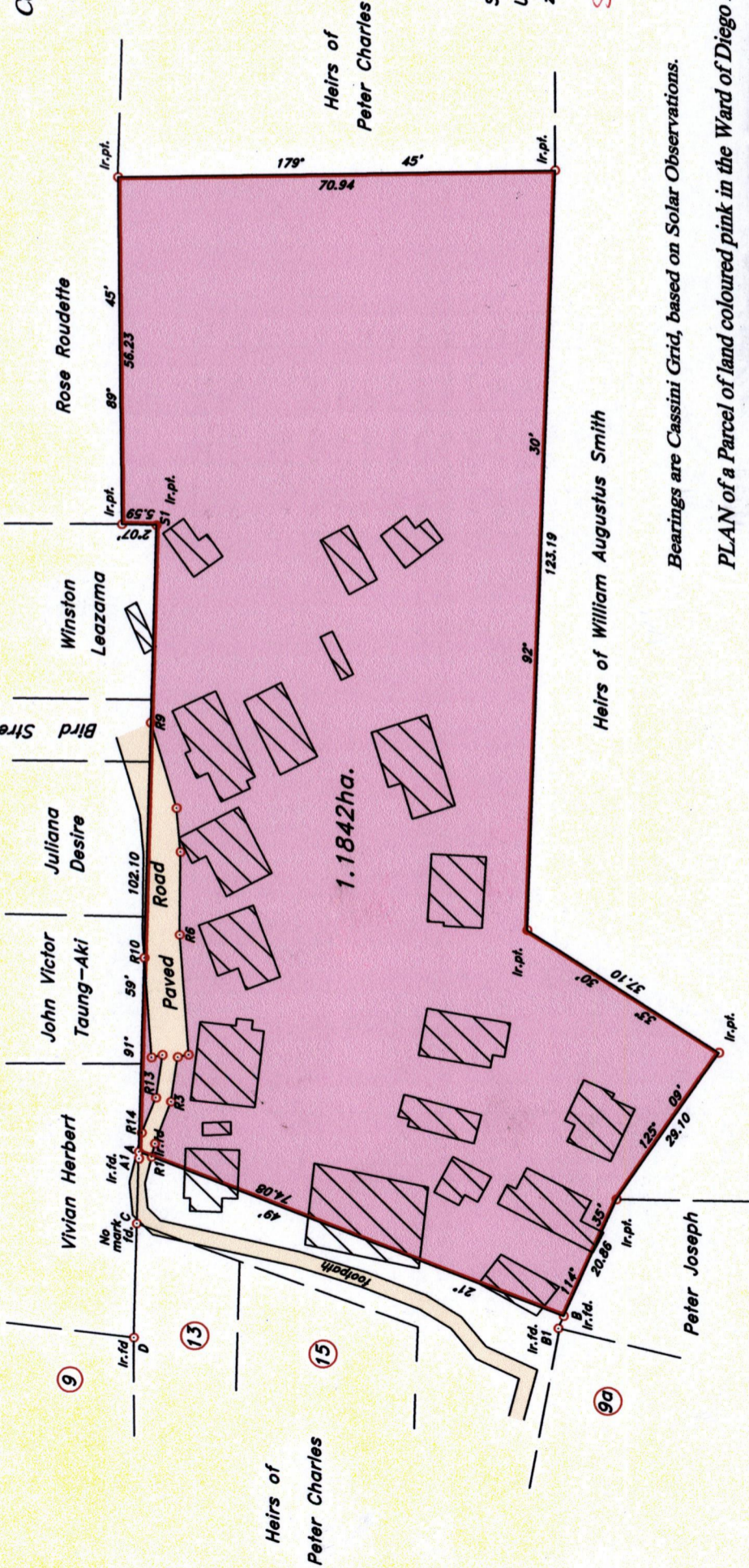
To Be Brought under the provisions of the Real Property Ordinance

Cadastral Sheet 13D (A.19.D.)  
1/c/2

Ward of Diego Martin

County of St. George

Process ID# 69515



VIDE  
Plan JB 264



Station S1 : (0658675m E, 1181730m N)  
U.T.M (NAPARIMA) Coordinate  
zone. 20 (Accuracy ± 3.0m)

SEE 1501:24

Bearings are Cassini Grid, based on Solar Observations.


PLAN of a Parcel of land coloured pink in the Ward of Diego Martin

Containing **one point one eight four two hectares**

Surveyed by me, with due authority on 6th December 1999 & 11th January 2000 for ROY CHARLES

In accordance with Regulation 25 (1) of the Land Surveyors' Regulations 1998, I certify

that this plan is correct.

Approved   
Director of Surveys 2011/11/11

○ Denotes point at which boundary changes direction  
SCALE 1 : 1000 Distances are in metres.

STATION	BEARING	DIST.
D - C	91° 59'	18.74
C - A1	91° 59'	10.62
A1 - A	91° 59'	1.10
B1 - B	114° 46'	2.18

Checked by  11/11/11

Entered on  13/08/2013  
Trinidad and Tobago Land Surveyor

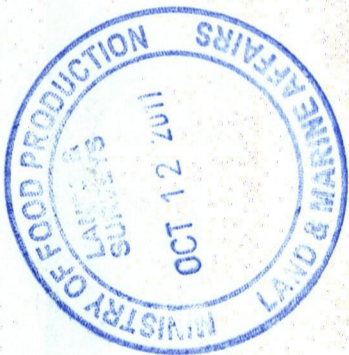
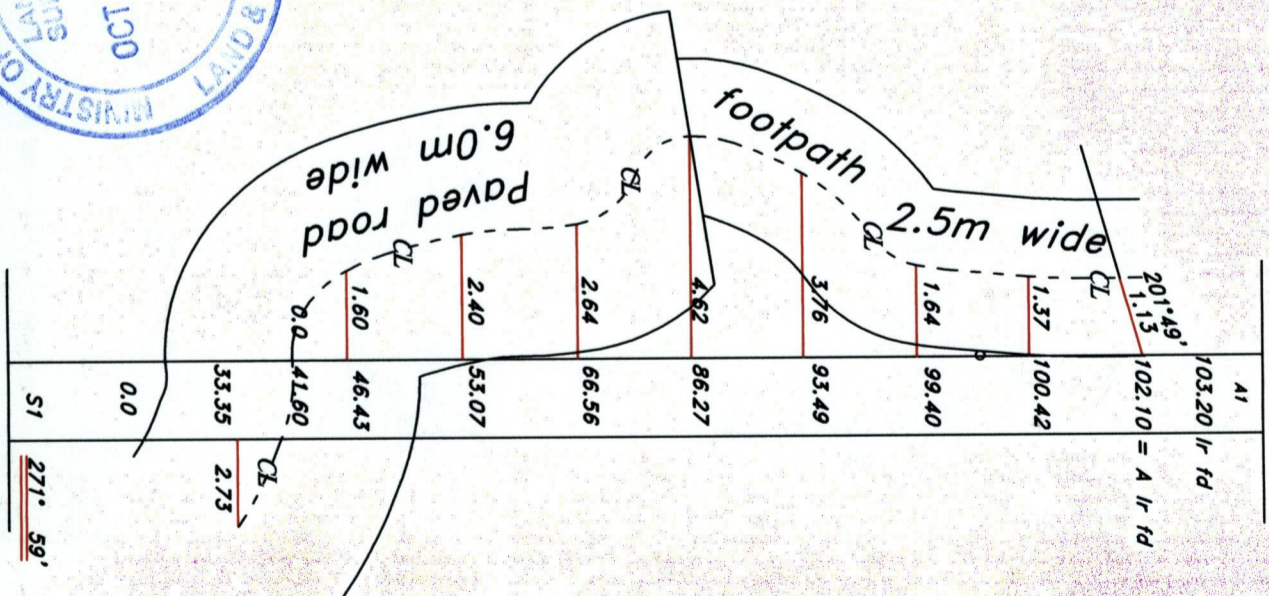
04<sup>th</sup> October .....2011.

1369

150

1319 | 101

Sta	Dist	Bearing	Sta
R1	2.23	104° 08'	R2
R2	7.31	111° 06'	R3
R3	7.41	98° 47'	R4
R4	1.80	167° 33'	R5
R5	19.69	86° 14'	R6
R6	13.52	90° 60'	R7
R7	7.12	85° 05'	R8
R8	14.45	73° 39'	R9
R9	38.27	271° 59'	R10
R10	16.31	266° 14'	R11
R11	1.80	167° 33'	R12
R12	7.12	278° 46'	R13
R13	6.17	292° 16'	R14
R14	3.15	278° 19'	A
A	2.26	201° 49'	R1



1369/150