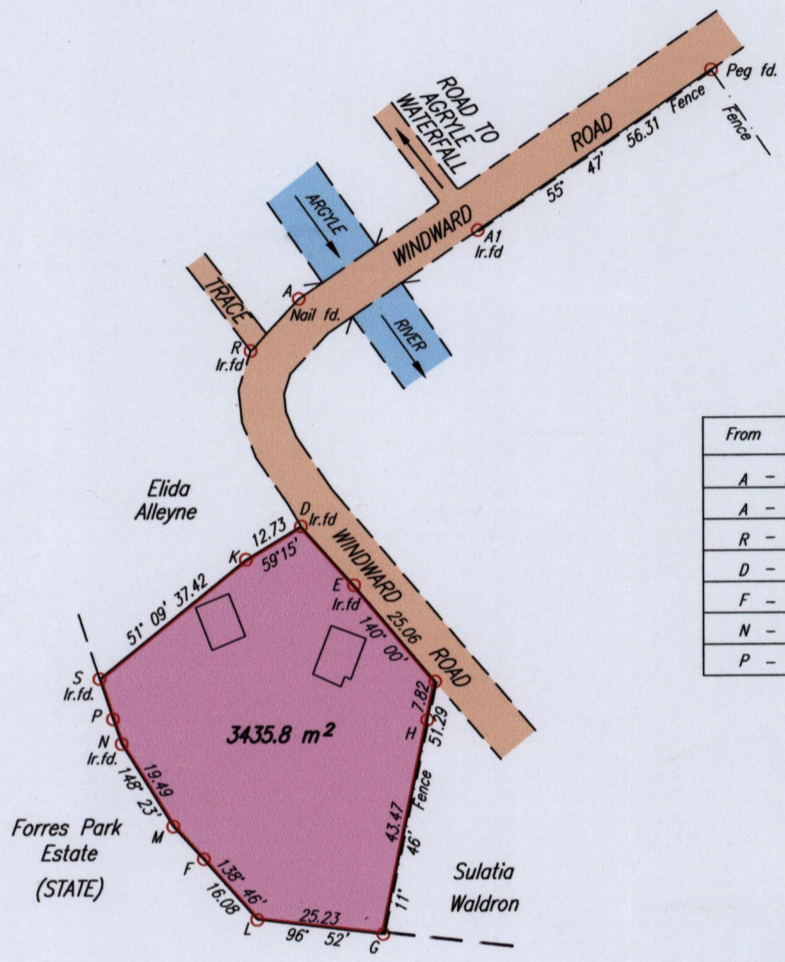


1369/1369

Process ~~LD~~ 69508

To be brought under the provisions of the Real Property Ordinance

ARGYLE

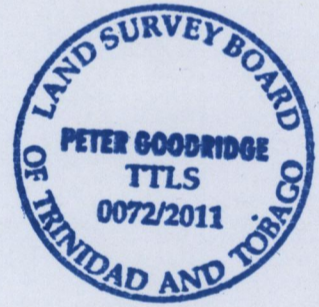


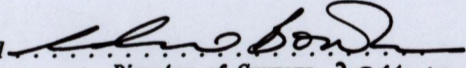
LEGEND

From	To	Bearing	Distance
A	A1	69° 20'	38.15
A	R	223° 09'	14.06
R	D	164° 15'	36.41
D	E	138° 04'	15.79
F	M	316° 59'	8.88
N	P	340° 53'	5.22
P	S	341° 47'	8.47

References :
See Plan J.B.11
Plan P.E.9

Coordinates of D (I.r.f.d.): 0763605mE, 1244427mN
U.T.M. 20 WGS 84 (+/- 11.00m)
G.P.S. Direct Observation



Approved 
Director of Surveys 2011-10-25

SCALE 1:1500

Distances are in METRES

○ Denotes Iron put except where otherwise stated

Bearings are Cassini Grid based on Solar Observations

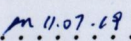
PLAN of a Parcel of land coloured pink in the Ward of Tobago

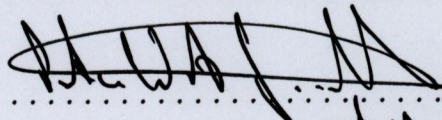
Containing three thousand four hundred and thirty five point eight square metres

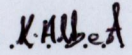
Surveyed by me, with due authority, on the 9th of September 2005 for Odette Baptiste

In accordance with Regulation 25 (1) of The Land Surveyors' Regulations 1998,

I certify that this plan is correct.

Checked by  11.07.09

 TTLS

Entered  1-7-2013

Trinidad & Tobago Land Surveyor 2nd May 2011
C:\LESS 2011\TOBAGO\BAPTISTE,ODETTE.dwg FILE NO: TB054