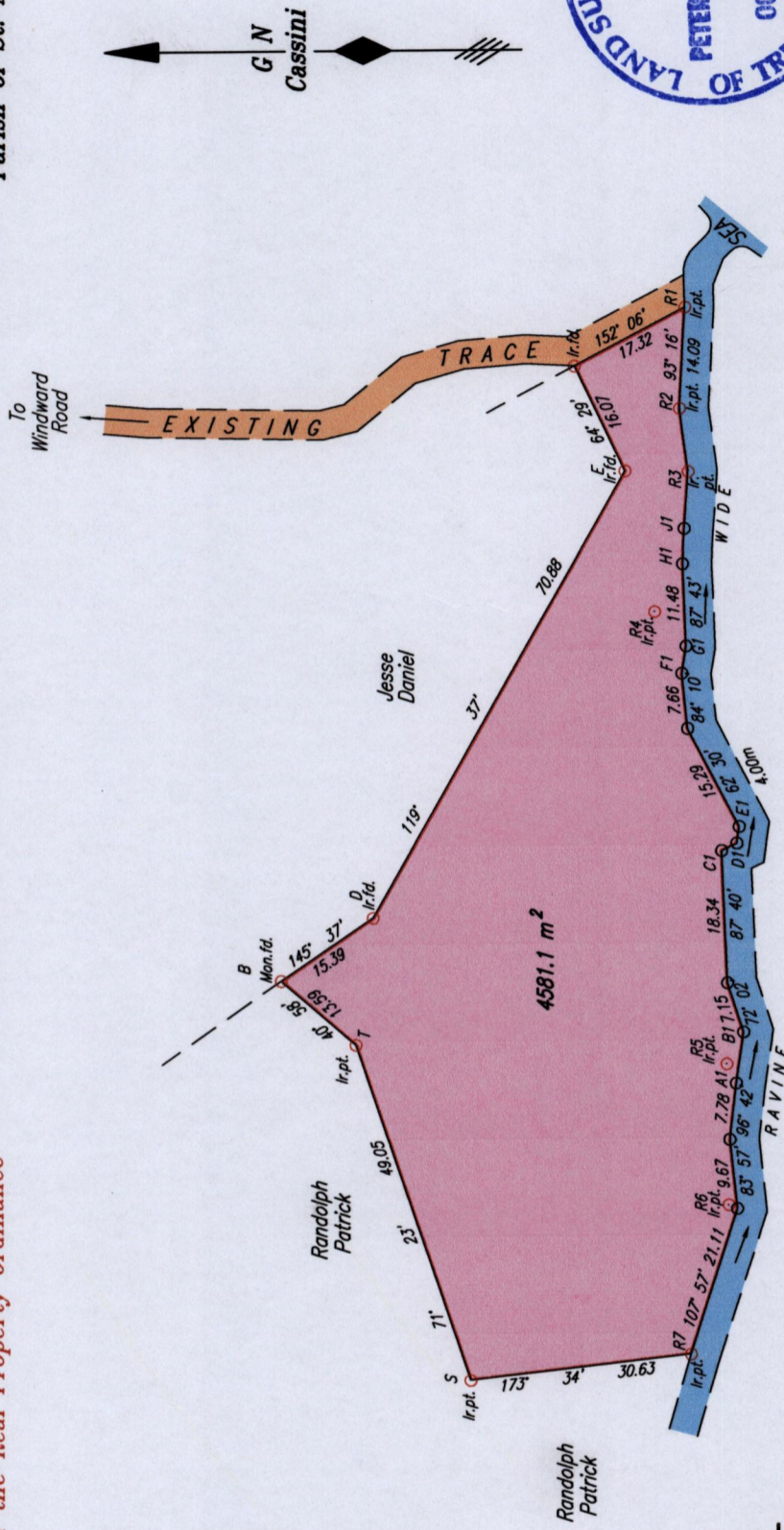


To be brought under the Provisions of the Real Property Ordinance

Process LD# 38380

LEGEND

| From | To | Bearing | Distance |
|------|------|----------|----------|
| R7 | - R6 | 104° 24' | 21.30 |
| R6 | - R5 | 89° 22' | 19.54 |
| R5 | - R4 | 81° 11' | 63.35 |
| R4 | - R3 | 103° 40' | 19.92 |
| R3 | - R2 | 82° 34' | 8.75 |
| A1 | - B1 | 98° 29' | 7.15 |
| C1 | - D1 | 154° 03' | 2.35 |
| D1 | - E1 | 98° 24' | 2.33 |
| F1 | - G1 | 99° 09' | 3.60 |
| H1 | - J1 | 93° 15' | 4.89 |
| J1 | - R3 | 93° 59' | 7.88 |



Coordinates of D(lr.fd.) - 759742mE, 1240805mN
U.T.M. 20, WGS 84 (+/-10.0m)
G.P.S (Direct Observation)

Coordinates of E(lr.fd.) - 759804mE, 1240771mN
U.T.M. 20, WGS 84 (+/-10.0m)
G.P.S (Direct Observation)

SCALE 1:1000
Distances are in METRES

PLAN of a Parcel of land coloured pink in the Ward of Tobago
Containing four thousand five hundred and eighty one point one square metres
Surveyed by me, with due authority, on 20th May 2008 for Hollis Joseph & Janice Deane
In accordance with Regulation 25 (1) of The Land Surveyors' Regulations 1998,

Approved: *[Signature]*
Director of Surveys 2011.10.25

○ Denotes peg pt along Ravine
Bearings are Cassini Grid based on Solar Observations

I certify that this plan is correct.

Checked by *[Signature]* 11:10:24
Entered *[Signature]*
Trinidad & Tobago Land Surveyor *[Signature]* 24th July 2011
C:\LESS 2011\TOBAGO\DEANE, JANICE - PEMBROKE - JULY 2011\dwg. FILE NO: T028

1369/186136

1369

136